

Standard Development Timeline

This section is maintained by the drafting team during the development of the standard and will be removed when the standard becomes effective.

Description of Current Draft

Draft ~~1~~² of PRC-012-2 corrects the applicability of the fill-in-the-blank standards (PRC-012-1, PRC-013-1, and PRC-014-1) by assigning the requirement responsibilities to the specific users, owners, and operators of the Bulk-Power System, and incorporates the reliability objectives of all the RAS/SPS-related standards. ~~Draft 1~~^{This draft} contains nine requirements and measures, the associated rationale boxes and corresponding technical guidelines. There are also three attachments within the draft standard that are incorporated via references in the requirements. ~~Draft 1 of~~^{This draft of} PRC-012-2 is posted for a 45-day ~~initial~~ formal comment period with a parallel ~~initial~~ ballot in the last ten days of the comment period.

Completed Actions	Date
Standards Committee approved Standard Authorization Request (SAR) for posting	February 12, 2014
SAR posted for comment	February 18, 2014
Standards Committee approved the SAR	June 10, 2014
Draft 1 of PRC-012-2 posted for informal comment	April 30 – May 20, 2015
45-day formal comment period with initial ballot	August 20 – October 5, 2015
<u>45-day formal comment period with additional ballot</u>	<u>November 25, 2015 – January 8, 2016</u>

Anticipated Actions	Date
10-day final ballot	December 2015 <u>March 2016</u>
NERC Board (Board) adoption	February <u>May</u> 2016

When this standard receives Board adoption, the rationale boxes will be moved to the Supplemental Material Section of the standard.

A. Introduction

1. **Title:** Remedial Action Schemes
2. **Number:** PRC-012-2
3. **Purpose:** To ensure that Remedial Action Schemes (RAS) do not introduce unintentional or unacceptable reliability risks to the Bulk Electric System (BES).
4. **Applicability:**
 - 4.1. **Functional Entities:**
 - 4.1.1. Reliability Coordinator
 - ~~4.1.2. Transmission Planner~~
 - 4.1.2. Planning Coordinator
 - 4.1.3. RAS-~~owner~~entity – the Transmission Owner, Generator Owner, or Distribution Provider that owns all or part of a RAS
 - ~~4.1.4. RAS entity – the RAS owner designated to represent all RAS owner(s) for coordinating the review and approval of a RAS~~
 - 4.2. **Facilities:**
 - 4.2.1. Remedial Action Schemes (RAS)
5. **Effective Date:** See the Implementation Plan for PRC-012-2.

B. Requirements and Measures

Rationale for Requirement R1: Each Remedial Action Scheme (RAS) is unique and its action(s) can have a significant impact on the reliability and integrity of the Bulk Electric System (BES). Therefore, a review of a proposed new RAS or an existing RAS proposed for functional modification or retirement ~~(; i.e., removal from service)~~ must be completed prior to implementation or retirement. ~~A functional modification is~~

Functional modifications consist of any modification of the following:

- Changes to a RAS System conditions or Contingencies monitored by the RAS
- Changes to the actions the RAS is designed to initiate
- Changes to RAS hardware beyond ~~the in-kind~~ replacement of existing components that preserves the original functionality.
- Changes to RAS logic beyond error correcting
- Changes to redundancy levels; i.e., addition or removal

To facilitate a review that promotes reliability, the RAS-entity must provide the reviewer with sufficient details of the RAS design, function, and operation. This data and supporting documentation are identified in Attachment 1 of this standard, and Requirement R1 mandates that the RAS-entity provide them to the reviewing Reliability Coordinator (RC). The RC (reviewing RC) that coordinates the area where the RAS is located is responsible for the review. Ideally, when there is more than one RAS-entity for a RAS, the RAS-entities would collaborate and submit a single, coordinated Attachment 1 to the reviewing RC. In cases where a RAS crosses one or more RC Area boundaries, each affected RC is responsible for conducting either individual reviews or participating in a coordinated review.

- R1.** Prior to placing a new or functionally modified RAS in ~~service~~ or retiring an existing RAS, each RAS-entity shall submit provide the information identified in Attachment 1 for review to the Reliability Coordinator(s) ~~that coordinates the area(s)~~ where the RAS is located. *[Violation Risk Factor: Medium] [Time Horizon: Operations Planning]*
- M1.** Acceptable evidence may include, but is not limited to, a copy of the Attachment 1 documentation and the dated communications with the reviewing Reliability Coordinator(s) in accordance with Requirement R1.

Rationale for Requirement R2: The RC is the functional entity best suited to perform the RAS review because it has the widest-area operational and reliability perspective of all functional entities and an awareness of reliability issues in any neighboring RC Area. This Wide Area purview ~~provides continuity in the review process and~~ facilitates the evaluation of interactions among separate RAS as well as interactions among RAS and other protection and control systems. Including Review by the RC also minimizes the possibility of a conflict of interest that could exist because of business relationships among the RAS-entity, Planning Coordinator (PC), Transmission Planner (TP), or other entities that are likely to be involved in the planning or implementation of a RAS. The RC

is not expected to possess more information or ability than anticipated by their functional registration as designated by NERC. The RC may request assistance ~~into~~ to perform RAS reviews from other parties such as the PC or regional technical groups; however, the RC will retain the responsibility for compliance with this requirement.

Attachment 2 of this standard is a checklist the RC can use to identify design and implementation aspects of RAS and facilitate consistent reviews for each ~~RAS~~-submitted RAS. The time frame of four-~~full-~~calendar months is consistent with current utility and regional practice; however, flexibility is provided by allowing the ~~parties~~RC(s) and RAS-~~entity(ies)~~ to negotiate a mutually agreed upon schedule for the review.

Note: An RC may need to include this task in its reliability plan(s) for the NERC Region(s) in which it is located.

- R2.** Each Reliability Coordinator that receives Attachment 1 information pursuant to Requirement R1, shall, within four-~~full-~~calendar months of receipt, or on a mutually agreed upon schedule, perform a review of the RAS in accordance with Attachment 2, and provide written feedback to ~~the~~each RAS-entity. *[Violation Risk Factor: Medium] [Time Horizon: Operations Planning]*
- M2.** Acceptable evidence may include, but is not limited to, dated reports, checklists, or other documentation detailing the RAS review, and the dated communications with the RAS-entity in accordance with Requirement R2.

Rationale for Requirement R3: The RC review is intended to identify reliability issues that must be resolved before the RAS can be put in-~~service~~. Examples of reliability issues include a lack of dependability, security, or coordination.

A specific time period for the RAS-entity to respond to the ~~RC review~~reviewing RC following identification of any reliability issue(s) is not necessary because ~~it is in-~~the RAS-entity's interest~~entity wants~~ to ~~obtain an expeditious response from~~expedite the ~~entity and thus ensure a~~ timely approval and subsequent implementation- ~~of the RAS.~~

- R3.** ~~Following the review performed pursuant to Requirement R2, the RAS entity shall address each identified issue and obtain approval from each reviewing Reliability Coordinator prior~~Prior to placing a new or functionally modified RAS in-~~service~~ or retiring an existing RAS-, each RAS-entity that receives feedback from the reviewing Reliability Coordinator(s) identifying reliability issue(s) shall resolve each issue to obtain approval of the RAS from each reviewing Reliability Coordinator. *[Violation Risk Factor: Medium] [Time Horizon: Operations Planning]*
- M3.** Acceptable evidence may include, but is not limited to, dated documentation and communications with the reviewing Reliability Coordinator that no reliability issues were identified during the review or that all identified reliability issues were resolved in accordance with Requirement R3.

Rationale for Requirement R4: Requirement R4 mandates that an evaluation of each RAS be performed at least once every sixty ~~full~~ calendar months. The purpose of ~~at~~the periodic RAS evaluation is to verify the continued effectiveness and coordination of the RAS, as well as to verify that ~~requirements for BES performance following an inadvertent, if a RAS operation or a single component failure in the RAS continues or single component malfunction were to occur, the requirements for BES performance would continue~~ to be satisfied. ~~A~~The periodic evaluation is needed because changes in ~~system~~System topology or operating conditions ~~that have occurred since the previous RAS evaluation—or initial review—was completed~~ may change the effectiveness of a RAS or the way it impacts the BES.

~~Sixty full calendar months,~~ Requirement R4 also clarifies that the RAS single component failure and single component malfunction tests do not apply to RAS which ~~begins on~~are determined to be limited impact. A RAS designated as limited impact cannot, by ~~inadvertent operation or failure to operate, cause or contribute to BES Cascading, uncontrolled separation, angular instability, voltage instability, voltage collapse, or unacceptably damped oscillations.~~ A RAS implemented after the effective date of ~~the~~this standard ~~pursuant to~~will be designated as limited impact or not by the ~~implementation plan,~~reviewing RC(s) during its review. A RAS implemented prior to the effective date of this standard that has been through the regional review process and designated as Type 3 in NPCC, Type 2 in ERCOT, or LAPS in WECC will be recognized as limited impact for the purposes of Requirement 4, Parts 4.1.3 and 4.1.4. Requiring a limited impact RAS to meet the single component failure and single component malfunction tests would add complexity to the design with minimal benefit to the reliability of the BES. See Attachment 2 for a description of the limited impact determination by the Reliability Coordinator.

For existing RAS, the initial performance of Requirement R4 must be completed within ~~sixty full calendar months of the effective date of PRC-012-2.~~ For new or functionally modified RAS, the initial performance of the requirement must be completed within ~~sixty full calendar months of the RAS approval date by the reviewing RC(s).~~ Sixty full calendar months was selected as the maximum time frame between evaluations based on the time frames for similar requirements in Reliability Standards PRC-006, PRC-010, and PRC-014. The RAS evaluation can be performed sooner if it is determined that material changes to ~~system~~System topology or ~~system~~System operating conditions ~~have occurred that~~ could potentially impact the effectiveness or coordination of the RAS. The periodic RAS evaluation will typically lead to one of the following outcomes: 1) affirmation that the existing RAS is effective; 2) identification of changes needed to the existing RAS; or, 3) justification for RAS retirement.

The items required to be addressed in the evaluation ~~are planning analyses that may~~ involve modeling of the interconnected transmission system to assess BES performance; ~~consequently, the TP.~~ The Planning Coordinator (PC) is the functional entity best suited to perform ~~the analyses.~~this evaluation because they have a wide area planning perspective. To promote reliability, the ~~TP~~PPC is required to provide the ~~RAS owner(s) and each~~

~~reviewing RC with the~~ results of the evaluation ~~to each impacted Transmission Planner and Planning Coordinator, in addition to each reviewing RC and RAS-entity.~~

The previous version of this standard (PRC-012-01 Requirement 1, R1.4) states “... the inadvertent operation of a RAS shall meet the same performance requirement (TPL-001-0, TPL-002-0, and TPL-003-0) as that required of the ~~contingency~~Contingency for which it was designed, and not exceed TPL-003-0.” Requirement R4 clarifies that the inadvertent operation to be considered would only be that caused by the malfunction of a single RAS component. This allows security features to be designed into the RAS such that inadvertent operation due to a single component malfunction is prevented. Otherwise ~~and~~, consistent with PRC-012-01 Requirement 1, R1.4, the RAS should be designed so that its whole or partial inadvertent operation due to a single component malfunction satisfies the ~~system~~System performance requirements for the same Contingency for which the RAS was designed.

If the RAS was installed for an extreme event in TPL-001-4 or for some other Contingency or System condition not defined in TPL-001-4 (therefore without performance requirements), its inadvertent operation still must meet some minimum System performance requirements. However, instead of referring to the TPL-001-4, Requirement R4 lists the System performance requirements that the inadvertent operation must satisfy. The performance requirements listed (Parts 4.1.3.1 – 4.1.3.5) are the ones that are common to all planning events P0-P7 listed in TPL-001-4.

- R4.** Each ~~Transmission Planner shall perform an evaluation of each RAS within its planning area~~ Planning Coordinator, at least once every 60-~~full~~-calendar-~~months~~ ~~and provide the RAS owner(s) and the reviewing Reliability Coordinator(s) the results including any identified deficiencies. Each evaluation shall determine whether;~~ shall: [Violation Risk Factor: Medium] [Time Horizon: Long-term Planning]

4.1. Perform an evaluation of each RAS within its planning area to determine whether:

4.1.4.1.1. The RAS mitigates the System condition(s) or Contingency(ies) for which it was designed.

4.2.4.1.2. The RAS avoids adverse interactions with other RAS, and protection and control systems.

4.3.4.1.3. The-Except for “limited impact”¹ RAS, the possible inadvertent operation of the RAS, resulting from any single RAS component malfunction satisfies all of the following:

¹ A RAS designated as “limited impact” cannot, by inadvertent operation or failure to operate, cause or contribute to BES Cascading, uncontrolled separation, angular instability, voltage instability, voltage collapse, or unacceptably damped oscillations. See Attachment 2 for a description of the limited impact determination by the Reliability

4.3.1.4.1.3.1. The BES shall remain stable.

4.3.2.4.1.3.2. Cascading shall not occur.

4.3.3.4.1.3.3. Applicable Facility Ratings shall not be exceeded.

4.3.4.4.1.3.4. BES voltages shall be within post-Contingency voltage limits and post-Contingency voltage deviation limits as established by the Transmission Planner and the Planning Coordinator.

4.3.5.4.1.3.5. Transient voltage responses shall be within acceptable limits as established by the Transmission Planner and the Planning Coordinator.

4.4.4.1.4. ~~A~~Except for limited impact RAS, a single component failure in the RAS, when the RAS is intended to operate, does not prevent the BES from meeting the same performance requirements (defined in Reliability Standard TPL-001-4 or its successor) as those required for the events and conditions for which the RAS is designed.

4.2. Provide the results of the RAS evaluation including any identified deficiencies to each reviewing Reliability Coordinator and RAS-entity, and each impacted Transmission Planner and Planning Coordinator.

M4. Acceptable evidence may include, but is not limited to, dated reports or other documentation of the analyses comprising the evaluation(s) of each RAS and dated communications with the RAS-~~owner(s)entity(ies), Transmission Planner(s), Planning Coordinator(s),~~ and the reviewing Reliability Coordinator(s) in accordance with Requirement R4.

Rationale for Requirement R5: The correct operation of a RAS is important for maintaining the reliability and integrity of the BES. Any incorrect operation of a RAS indicates that the RAS effectiveness and/or coordination has been compromised. Therefore, all operations of a RAS and failures of a RAS to operate when expected must be analyzed to verify that the RAS operation was consistent with its intended functionality and design.

A RAS operational performance analysis is intended to: 1) verify RAS operation ~~is~~was consistent with the implemented design; or 2) identify RAS performance deficiencies that manifested in the incorrect RAS operation or failure of RAS to operate when expected.

The 120-~~full~~ calendar-~~day~~ time frame for the completion of RAS operational performance analysis aligns with the time frame established in Requirement R1 from PRC-004-4 regarding the investigation of a Protection System Misoperation. -To promote

Coordinator. A RAS implemented prior to the effective date of this standard that has been through the regional review process and designated as Type 3 in NPCC, Type 2 in ERCOT, or LAPS in WECC will be recognized as limited impact for the purposes of Requirement 4, Parts 4.1.3 and 4.1.4.

reliability, each RAS-~~owner~~entity is required to provide the results of RAS operational performance analyses ~~to each~~that identified any deficiencies to its reviewing RC-~~(s)~~.

RAS-~~owners~~entities may need to collaborate with their associated ~~TP~~Transmission Planner to comprehensively analyze RAS operational performance. This is because a RAS operational performance analysis involves verifying that the RAS operation ~~triggers and responds~~(Parts was triggered correctly (Part 5.1.1), responded as designed (Part 5.1.2)), and that the resulting BES response (Parts 5.1.3, and 5.1.4) ~~is~~was consistent with the intended functionality and design of the RAS. Ideally, when there is more than one RAS-entity for a RAS, the RAS-entities would collaborate on the operational performance analysis.

- R5. Each RAS-~~owner~~shallentity, within 120- full calendar days of a RAS operation or a failure of ~~its~~ RAS to operate when expected, ~~analyze the RAS performance and provide the results of the analysis, including any identified deficiencies, too~~ on a mutually agreed upon schedule with its reviewing Reliability Coordinator(s). ~~The RAS operational performance analysis shall determine whether-~~, shall: *[Violation Risk Factor: Medium] [Time Horizon: Operations Planning]*

5.1. Participate in analyzing the RAS operational performance to determine whether:

5.1.5.1.1. The System events and/or conditions appropriately triggered the RAS.

5.2.5.1.2. The RAS responded as designed.

5.3.5.1.3. The RAS was effective in mitigating BES performance issues it was designed to address.

5.4.5.1.4. The RAS operation resulted in any unintended or adverse BES response.

5.2. Provide the results of RAS operational performance analysis that identified any deficiencies to its reviewing Reliability Coordinator(s).

- M5. Acceptable evidence may include, but is not limited to, dated documentation detailing the results of the RAS operational performance analysis and dated communications with the reviewing Reliability Coordinator(s) in accordance with Requirement R5.

Rationale for Requirement R6: Deficiencies, identified ~~either~~ in the periodic RAS evaluation conducted by the ~~TP in~~PC pursuant to Requirement R4-~~or,~~ in the operational performance analysis conducted by the RAS-~~owner~~entity pursuant to Requirement R5, ~~are likely too~~ in the functional test performed by the RAS-entity pursuant to Requirement R8, potentially pose a reliability risk to the BES. To mitigate these potential reliability risks, Requirement R6 mandates that ~~the~~each RAS-~~owner~~entity develop a Corrective Action Plan (CAP) ~~that establishes to address the identified deficiency. The CAP contains~~ the mitigation actions and associated timetable ~~to address the deficiency-~~ necessary to remedy the specific deficiency. The RAS-entity may request assistance with

CAP development from other parties such as its Transmission Planner or Planning Coordinator; however, the RAS-entity has the responsibility for compliance with this requirement.

If the CAP requires that a functional change be made to a RAS, the RAS-~~owner~~entity will need to submit information identified in Attachment 1 to the reviewing RC(s) prior to placing RAS modifications in-~~service~~ per Requirement R1.

Depending on the complexity of the ~~issues,~~identified deficiency(ies), development of a CAP ~~might~~may require ~~study,~~studies, and other engineering, or consulting work. A maximum time frame of six-~~full-~~calendar months is specified ~~to allow enough time for~~ RAS-~~owner~~entity collaboration on the CAP development, ~~while ensuring that deficiencies are addressed in a reasonable time-.~~

R6. ~~Within six full calendar months of being notified of a deficiency in its RAS pursuant to Requirement R4 or Requirement R5, each RAS owner~~Each RAS-entity shall participate in developing a Corrective Action Plan (CAP) and submit the CAP to its reviewing Reliability Coordinator(s-) within six full calendar months of: [Violation Risk Factor: Medium] [Time Horizon: Operations Planning, Long-term Planning]

- Being notified of a deficiency in its RAS pursuant to Requirement R4, or
- Notifying the Reliability Coordinator pursuant to Requirements R5, or
- Identifying a deficiency in its RAS pursuant to Requirement R8.

M6. Acceptable evidence may include, but is not limited to, a dated CAP and dated communications ~~with~~among each reviewing Reliability Coordinator and each RAS-entity in accordance with Requirement R6.

Rationale for Requirement R7: Requirement R7 mandates ~~the~~each RAS-~~owner(s)~~entity implement a CAP (developed in Requirement R6) that mitigates the deficiencies identified in Requirements R4-~~and,~~ R5, or R8. By definition, a CAP is: “A list of actions and an associated timetable for implementation to remedy a specific problem.” The implementation of a properly developed CAP ensures that RAS deficiencies are mitigated in a timely manner. Each reviewing Reliability Coordinator must be notified if CAP actions or timetables change-, and when the CAP is completed.

R7. ~~For~~Each RAS-entity shall, for each ~~CAP submitted~~of its CAPs developed pursuant to Requirement R6, ~~each RAS owner shall:~~ [Violation Risk Factor: Medium] [Time Horizon: Operations Planning, Long-term Planning]

- 7.1. Implement the CAP.
- 7.2. Update the CAP if actions or timetables change.
- 7.3. Notify each reviewing Reliability Coordinator if CAP actions or timetables change and when the CAP is completed.

- M7. Acceptable evidence may include, but is not limited to, dated documentation such as CAPs, project or work management program records, settings sheets, work orders, maintenance records, and communication with the ~~appropriate~~ reviewing Reliability Coordinator(s) that documents the implementation ~~or~~ updating, or completion of a CAP in accordance with Requirement R7.

Rationale for Requirement R8: Due to the wide variety of RAS designs and implementations, and the potential for impacting BES reliability, it is important that periodic functional testing of a RAS be performed. A functional test provides an overall confirmation of the RAS to operate as designed and verifies the proper operation of the non-Protection System (control) components of a RAS that are not addressed in PRC-005. Protection System components that are part of a RAS are maintained in accordance with PRC-005. ~~The drafting team selected a six-calendar-year testing interval to be consistent with some of the maintenance intervals of various Protection System and Automatic Reclosing components established in PRC-005. This interval provides an entity the opportunity to design its RAS functional testing program such that it coincides with the testing of any associated PRC-005 components.~~

The six- or twelve full calendar-year test interval, which begins on the effective date of the standard pursuant to the PRC-012-2 implementation plan, is a balance between the resources required to perform the testing and the potential reliability impacts to the BES created by undiscovered latent failures that could cause an incorrect operation of the RAS. Extending to longer intervals increases the reliability risk to the BES posed by a potentially an undiscovered latent failure that could cause an incorrect operation or failure of the RAS. The RAS-owner entity is in the best position to determine the testing procedure and schedule due to its overall knowledge of the RAS design, installation, and functionality. Functional testing may be accomplished with end-to-end testing or a segmented approach. ~~Each~~ For segmented testing, each segment of a RAS ~~should~~ must be tested ~~but overlapping.~~ Overlapping segments can be tested individually negating the need for complex maintenance schedules and outages.

The maximum allowable interval between functional tests is six full calendar years for RAS that are not designated as limited impact RAS and twelve full calendar years for RAS that are designated as limited impact RAS. The interval between tests begins on the date of the most recent successful test for each individual segment or end-to-end test. A successful test of one segment only resets the test interval clock for that segment. A correct operation of a RAS qualifies as a functional test ~~as long as all~~ for those RAS segments which operate- (documentation for compliance with Requirement R5 Part 5.1). If an event causes a partial operation of a RAS, the segments without an operation will require a separate functional test within the ~~six-year interval to be compliant with Requirement R8~~ maximum interval with the starting date determined by the previous successful test of the segments that did not operate.

- R8. ~~At least once every six calendar years, each~~Each RAS-ownerentity shall ~~perform~~participate in performing a functional test of each of its RAS to verify the overall RAS performance and the proper operation of non-Protection System components-: *[Violation Risk Factor: High] [Time Horizon: Long-term Planning]*
- At least once every six full calendar years for all RAS not designated as limited impact, or
 - At least once every twelve full calendar years for all RAS designated as limited impact
- M8. Acceptable evidence may include, but is not limited to, dated documentation ~~of~~detailing the RAS operational performance analysis for a correct RAS segment or an end-to-end operation (Measure M5 documentation), or dated documentation demonstrating that a functional testingtest of each RAS segment or an end-to-end test was performed in accordance with Requirement R8.

Rationale for Requirement R9: The RAS database is a comprehensive record of all RAS existing in a Reliability Coordinator Area. The database enables the RC to provide other entities high-level information on existing RAS that ~~can~~could potentially impact the ~~entities'~~operational and/or planning activities of that entity. Attachment 3 lists the minimum information required for the RAS database, which includes a summary of the RAS initiating conditions, corrective actions, and System issues being mitigated. This information allows an entity to evaluate the reliability need for requesting more detailed information from the RAS-~~entity~~entities identified in the database contact information. The RC is the appropriate entity to maintain the database because the RC receives the required database information when a new or modified RAS is submitted for review. The twelve full calendar month time frame is aligned with industry practice and allows sufficient time for the RC to collect the appropriate information from RAS-entities and update the RAS database.

- R9. Each Reliability Coordinator shall update a RAS database containing, at a minimum, the information in Attachment 3 at least once ~~each~~every twelve full calendar ~~year~~months. *[Violation Risk Factor: Lower] [Time Horizon: Operations Planning]*
- M9. Acceptable evidence may include, but is not limited to, dated spreadsheets, database reports, or other documentation demonstrating a RAS database was ~~maintained~~updated in accordance with Requirement R9.

C. Compliance

1. Compliance Monitoring Process

1.1. Compliance Enforcement Authority:

As defined in the NERC Rules of Procedure, “Compliance Enforcement Authority” means NERC or the Regional Entity in their respective roles of monitoring and enforcing compliance with the NERC Reliability Standards.

1.2. Evidence Retention:

The following evidence retention period(s) identify the period of time an entity is required to retain specific evidence to demonstrate compliance. For instances where the evidence retention period specified below is shorter than the time since the last audit, the Compliance Enforcement Authority may ask an entity to provide other evidence to show that it was compliant for the full-time period since the last audit.

The applicable entity shall keep data or evidence to show compliance as identified below unless directed by its Compliance Enforcement Authority to retain specific evidence for a longer period of time as part of an investigation.

The RAS-entity (Transmission Owner, Generator Owner, and Distribution Provider) shall each keep data or evidence to show compliance with Requirements ~~R1 through, R3, R5, R6, R7, and R8,~~ and Measures M1, M3, M5, M6, M7, and M8 since the last audit, unless directed by its Compliance Enforcement Authority to retain specific evidence for a longer period of time as part of an investigation.

The Reliability Coordinator shall each keep data or evidence to show compliance with Requirements R2 and R9, and Measures ~~M1 through M2 and~~ M9 since the last audit, unless directed by its Compliance Enforcement Authority to retain specific evidence for a longer period of time as part of an investigation.

The Planning Coordinator shall each keep data or evidence to show compliance with Requirement R4 and Measure M4 since the last audit, unless directed by its Compliance Enforcement Authority to retain specific evidence for a longer period of time as part of an investigation.

If a RAS-entity (Transmission Owner, Generator Owner or Distribution Provider), Reliability Coordinator, or Planning Coordinator is found non-compliant, it shall keep information related to the non-compliance until mitigation is completed and approved, or for the time specified above, whichever is longer.

The Compliance Enforcement Authority shall keep the last audit records and all requested and submitted subsequent audit records.

1.3. Compliance Monitoring and Enforcement Program

As defined in the NERC Rules of Procedure, “Compliance Monitoring and Enforcement Program” refers to the identification of the processes that will be used to evaluate data or information for the purpose of assessing performance or outcomes with the associated Reliability Standard.

Violation Severity Levels

R #	Violation Severity Levels			
	Lower VSL	Moderate VSL	High VSL	Severe VSL
R1.	N/A	N/A	N/A	The RAS-entity failed to submit <u>provide</u> the information identified in Attachment 1 to one or more of the <u>each</u> Reliability Coordinator (s) <u>prior to placing a new or functionally modified RAS in-service or retiring an existing RAS</u> in accordance with Requirement R1.
R2.	The reviewing Reliability Coordinator performed the review and provided the written feedback in accordance with Requirement R2, but was late by less than or equal to 30- <u>full</u> calendar days.	The reviewing Reliability Coordinator performed the review and provided the written feedback in accordance with Requirement R2, but was late by more than 30- <u>full</u> calendar days but less than or equal to 60- <u>full</u> calendar days.	The reviewing Reliability Coordinator performed the review and provided the written feedback in accordance with Requirement R2, but was late by more than 60- <u>full</u> calendar days but less than or equal to 90- <u>full</u> calendar days.	The reviewing Reliability Coordinator performed the review and provided the written feedback in accordance with Requirement R2, but was late by more than 90- <u>full</u> calendar days. OR The reviewing Reliability Coordinator failed to perform the review or provide feedback in

R #	Violation Severity Levels			
	Lower VSL	Moderate VSL	High VSL	Severe VSL
				accordance with Requirement R2.
R3.	N/A	N/A	N/A	The RAS-entity failed <u>to resolve identified reliability issue(s)</u> to obtain approval from each reviewing Reliability Coordinator prior to placing a new or functionally modified RAS in <u>service</u> or retiring an existing RAS in accordance with Requirement R3.
R4.	The Transmission Planner <u>Planning Coordinator</u> performed the evaluation in accordance with Requirement R4, but in greater than 60- <u>full</u> -calendar months but less than <u>or equal to</u> 61- <u>full</u> -calendar months.	The Transmission Planner <u>Planning Coordinator</u> performed the evaluation in accordance with Requirement R4, but in greater than 61- <u>full</u> -calendar months but less than <u>or equal to</u> 62- <u>full</u> -calendar months.	The Transmission Planner <u>Planning Coordinator</u> performed the evaluation in accordance with Requirement R4, but in greater than 62- <u>full</u> -calendar months but less than <u>or equal to</u> 63- <u>full</u> -calendar months. OR The Transmission Planner <u>Planning Coordinator</u> performed the evaluation in	The Transmission Planner <u>Planning Coordinator</u> performed the evaluation in accordance with Requirement R4, but in greater than 63- <u>full</u> -calendar months. OR The Transmission Planner failed to perform the evaluation in accordance with Requirement R4.

R #	Violation Severity Levels			
	Lower VSL	Moderate VSL	High VSL	Severe VSL
			accordance with Requirement R4, but failed to evaluate one of the Parts 4.1.1 through 4.1.4.	<p>OR</p> <p>The Transmission Planner<u>The Planning Coordinator</u> performed the evaluation in accordance with Requirement R4, but failed to evaluate two or more of the Parts 4.1.1 through 4.1.4.</p> <p>OR</p> <p>The Transmission Planner<u>Planning Coordinator</u> performed the evaluation in accordance with Requirement R4, but failed to provide the results to one or more of the RAS owner(s) and the reviewing Reliability Coordinator(s) receiving entities listed in Part 4.2.</p> <p>OR</p> <p>The Planning Coordinator failed to perform the evaluation in accordance with Requirement R4.</p>

R #	Violation Severity Levels			
	Lower VSL	Moderate VSL	High VSL	Severe VSL
R5.	<p>The RAS-ownerentity performed the analysis in greater than 120 calendar days, but less than or equal to 130 calendar days in accordance with Requirement R5, but was late by less than or equal to 10 full calendar days.</p>	<p>The RAS-ownerentity performed the analysis in greateraccordance with Requirement R5, but was late by more than 130-10 full calendar days, but less than or equal to 140-20 full calendar days in accordance with Requirement R5.</p>	<p>The RAS-ownerentity performed the analysis in greateraccordance with Requirement R5, but was late by more than 140-20 full calendar days, but less than or equal to 150-30 full calendar days in accordance with Requirement R5.</p> <p>OR</p> <p>The RAS-ownerentity performed the analysis in accordance with Requirement R5, but failed to address one of the Parts 5.1.<u>1</u> through 5.<u>1</u>.4.</p>	<p>The RAS-ownerentity performed the analysis in greateraccordance with Requirement R5, but was late by more than 150-30 full calendar days.</p> <p>OR</p> <p>The RAS-owner failed to perform the analysis in accordance with Requirement R5.</p> <p>OR</p> <p>The RAS-ownerThe RAS-entity performed the analysis in accordance with Requirement R5, but failed to address two or more of the Parts 5.1.<u>1</u> through 5.<u>1</u>.4.</p> <p>OR</p> <p>The RAS-ownerentity performed the analysis in accordance with Requirement R5, but failed to provide the results (Part <u>5.2</u>) to one or more of the</p>

R #	Violation Severity Levels			
	Lower VSL	Moderate VSL	High VSL	Severe VSL
				reviewing Reliability Coordinator(s). OR <u>The RAS-entity failed to perform the analysis in accordance with Requirement R5.</u>
R6.	The RAS- owner <u>entity</u> developed a Corrective Action Plan and submitted it to its reviewing Reliability Coordinator(s) in accordance with Requirement R6, but was late by less than or equal to 10- <u>full</u> calendar days.	The RAS- owner <u>entity</u> developed a Corrective Action Plan and submitted it to its reviewing Reliability Coordinator(s) in accordance with Requirement R6, but was late by more than 10- <u>full</u> calendar days but less than or equal to 20- <u>full</u> calendar days.	The RAS- owner <u>entity</u> developed a Corrective Action Plan and submitted it to its reviewing Reliability Coordinator(s) in accordance with Requirement R6, but was late by more than 20- <u>full</u> calendar days but less than or equal to 30- <u>full</u> calendar days.	The RAS- owner <u>entity</u> developed a Corrective Action Plan and submitted it to its reviewing Reliability Coordinator(s) in accordance with Requirement R6, but was late by more than 30- <u>full</u> calendar days. OR The RAS- owner <u>entity</u> developed a Corrective Action Plan and <u>but</u> failed to submit it to one or more of its reviewing Reliability Coordinator(s) in accordance with Requirement R6. OR

R #	Violation Severity Levels			
	Lower VSL	Moderate VSL	High VSL	Severe VSL
				The RAS- owner <u>entity</u> failed to develop a Corrective Action Plan in accordance with Requirement R6.
R7.	The RAS- owner <u>entity</u> implemented a CAP (in accordance with Requirement R7, Part 7.1) , but failed to update the CAP (Part 7.2) if actions or timetables changed and, or failed to notify one or more <u>(Part 7.3) each</u> of the reviewing Reliability Coordinator(s) (Part 7.3), in accordance with Requirement R7 of the updated CAP or completion of the CAP.	N/A	N/A	The RAS- owner <u>entity</u> failed to implement a CAP (Part 7.1) in accordance with Requirement R7, <u>Part 7.1</u> .
R8.	The RAS- owner <u>entity</u> performed the functional test for a RAS as specified in Requirement R8, but was <u>late by</u> less than or equal to 30- <u>full</u> calendar days late .	The RAS- owner <u>entity</u> performed the functional test for a RAS as specified in Requirement R8, but was <u>late by</u> more than 30- <u>full</u> calendar days but less than or equal to 60- <u>full</u> calendar days late .	The RAS- owner <u>entity</u> performed the functional test for a RAS as specified in Requirement R8, but was <u>late by</u> more than 60- <u>full</u> calendar days but less than or equal to 90- <u>full</u> calendar days late .	The RAS- owner <u>entity</u> performed the functional test for a RAS as specified in Requirement R8, but was <u>late by</u> more than 90- <u>full</u> calendar days late . OR

R #	Violation Severity Levels			
	Lower VSL	Moderate VSL	High VSL	Severe VSL
				The RAS- owner <u>entity</u> failed to perform the functional test for a RAS as specified in Requirement R8.
R9.	The Reliability Coordinator updated the RAS database in accordance with Requirement R9, but was late by less than or equal to 30- <u>full</u> calendar days.	The Reliability Coordinator updated the RAS database in accordance with Requirement R9, but was late by more than 30- <u>full</u> calendar days but less than or equal to 60- <u>full</u> calendar days.	The Reliability Coordinator updated the RAS database in accordance with Requirement R9, but was late by more than 60- <u>full</u> calendar days but less than or equal to 90- <u>full</u> calendar days.	The Reliability Coordinator updated the RAS database in accordance with Requirement R9 but was late by more than 90- <u>full</u> calendar days. OR The Reliability Coordinator failed to update the RAS database in accordance with Requirement R9.

D. Regional Variances

None.

E. Associated Documents

Version History

Version	Date	Action	Change Tracking
1		Adopted by NERC Board of Trustees	New

Attachment 1 Supporting Documentation for RAS Review

The following checklist identifies important Remedial Action Scheme (RAS) information for each new or functionally modified² RAS that the RAS-entity ~~shall~~must document and provide to the reviewing Reliability Coordinator(s) (RC) ~~for review.~~. If an item on this list does not apply to a specific RAS, a response of ~~N/A or~~ “Not Applicable” for that item is appropriate. When ~~a RAS has been previously reviewed~~ are submitted for functional modification review and approval, only the proposed modifications to that RAS require review; however, the RAS-entity must provide a summary of the ~~previously approved~~ existing functionality. The RC may request additional information on any aspect of the RAS as well as any reliability issue related to the RAS. Additional entities (without decision authority) may be part of the RAS review process at the request of the RC.

I. General

1. Information such as maps, one-line drawings, substation and schematic drawings that identify the physical and electrical location of the RAS and related facilities.
2. Functionality of new RAS or proposed functional modifications to existing RAS and documentation of the pre- and post-modified functionality of the RAS.
3. The Corrective Action Plan (CAP) if RAS modifications are proposed in a CAP.
~~[Reference NERC Reliability Standard PRC-012, Requirements R5 and R7]~~
4. Data to populate the RAS database:
 - a. RAS name.
 - b. Each RAS-entity and contact information.
 - c. Expected or actual in-service date; most recent RC-approval date (Requirement R3); most recent evaluation date (Requirement R4); and date of retirement, if applicable.
 - d. System performance issue or reason for installing the RAS (e.g., thermal overload, angular instability, poor oscillation damping, voltage instability, under- or over-voltage, or slow voltage recovery).
 - e. Description of the Contingencies or System conditions for which the RAS was designed (i.e., initiating conditions).
 - f. Action(s) to be taken by the RAS.

² Functionally Modified: Any modification to a RAS consisting of any of the following:

- Changes to System conditions or contingencies monitored by the RAS
- Changes to the actions the RAS is designed to initiate
- Changes to RAS hardware beyond the in-kind replacement of existing components that preserve the original functionality is a functional modification.
- Changes to RAS logic beyond error correcting
- Changes to redundancy levels; i.e., addition or removal

g. Identification of limited impact³ RAS.

h. Any additional explanation relevant to high-level understanding of the RAS.

~~b.1. **Functional** RAS entity and contact information~~

~~c.1. Expected or actual in-service date; most recent RC approval date (Requirement R3); most recent evaluation date (Requirement R4); and date of retirement, if applicable.~~

~~d.1. System performance issue or reason for installing the RAS (e.g., thermal overload, angular instability, poor oscillation damping, voltage instability, under or over voltage, or slow voltage recovery).~~

II. Description of the contingencies or and Transmission Planning Information

e.1. Contingencies and System conditions for which that the RAS was designed (i.e., initiating conditions) is intended to remedy.

2. The action(s) to be taken by the RAS in response to disturbance conditions.

3. A summary of technical studies, if applicable, demonstrating that the proposed RAS actions satisfy System performance objectives for the scope of System events and conditions that the RAS is intended to remedy. The technical studies summary shall also include information such as the study year(s), System conditions, and Contingencies analyzed on which the RAS design is based, and the date those technical studies were performed.

4. Information regarding any future System plans that will impact the RAS.

5. RAS-entity proposed designation as limited impact or not.

6. Documentation describing the System performance resulting from the possible inadvertent operation of the RAS, except for limited impact RAS, caused by any single RAS component malfunction. Single component malfunctions in a RAS not determined to be limited impact must satisfy all of the following:

a. The BES shall remain stable.

b. Cascading shall not occur.

c. Applicable Facility Ratings shall not be exceeded.

d. BES voltages shall be within post-Contingency voltage limits and post-Contingency voltage deviation limits as established by the Transmission Planner and the Planning Coordinator.

e. Transient voltage responses shall be within acceptable limits as established by the Transmission Planner and the Planning Coordinator.

³ A RAS designated as “limited impact” cannot, by inadvertent operation or failure to operate, cause or contribute to BES Cascading, uncontrolled separation, angular instability, voltage instability, voltage collapse, or unacceptably damped oscillations. See Attachment 2 for a description of the limited impact determination by the Reliability Coordinator. A RAS implemented prior to the effective date of this standard that has been through the regional review process and designated as Type 3 in NPCC, Type 2 in ERCOT, or LAPS in WECC will be recognized as limited impact.

7. An evaluation indicating that the RAS settings and operation avoid adverse interactions with other RAS, and protection and control systems.

~~f. Action(s) to be taken by the RAS.~~

~~g. Any additional explanation relevant to high-level understanding of the RAS.~~

~~H.1. Functional Description and Transmission Planning Information~~

- ~~1. Contingencies and System conditions that the RAS is intended to remedy.
[Reference NERC Reliability Standards PRC-012, R1.2 and PRC-013, R1.1]~~
- ~~2.1. The action(s) to be taken by the RAS in response to disturbance conditions.
[Reference NERC Reliability Standards PRC-012, R1.2 and PRC-013, R1.2]~~
- ~~3. A summary of technical studies, if applicable, demonstrating that the proposed RAS actions satisfy System performance objectives for the scope of System events and conditions that the RAS is intended to remedy. The technical studies summary shall also include information such as the study year(s), System conditions, and Contingencies analyzed on which the RAS design is based, and the date those technical studies were performed. [Reference NERC Reliability Standard PRC-014, R3.2]~~
- ~~4.1. Information regarding any future System plans that will impact the RAS.
[Reference NERC Reliability Standard PRC-014, R3.2]~~
- ~~1. Documentation showing that the possible inadvertent operation of the RAS resulting from any single RAS component malfunction satisfies all of the following:
[Reference NERC Reliability Standard PRC-012, R1.4]~~
 - ~~a. The BES shall remain stable.~~
 - ~~b.a. Cascading shall not occur.~~
 - ~~c.a. Applicable Facility Ratings shall not be exceeded.~~
 - ~~d.a. BES voltages shall be within post-Contingency voltage limits and post-Contingency voltage deviation limits as established by the Transmission Planner and the Planning Coordinator.~~
 - ~~e.a. Transient voltage responses shall be within acceptable limits as established by the Transmission Planner and the Planning Coordinator.~~
- ~~5.1. An evaluation indicating that the RAS settings and operation avoid adverse interactions with other RAS, and protection and control systems.
[Reference NERC Reliability Standards PRC-012, R1.5 and PRC-014, R3.4]~~
- ~~6.8. Identification of other affected RCs.~~

III. Implementation

~~III.1. Implementation~~

1. Documentation describing the applicable equipment used for detection, ~~telecommunications~~dc supply, communications, transfer trip, ~~control actions~~, logic processing, and monitoring.
- ~~2. Information on detection logic and settings/parameters that control the operation of the RAS. Information on detection logic and settings/parameters that control the operation of the RAS. [Reference NERC Reliability Standards PRC-012, R1.2 and PRC-013, R1.3]~~
- ~~2.~~
3. Documentation showing that any multifunction device used to perform RAS function(s), in addition to other functions such as protective relaying or SCADA, does not compromise the reliability of the RAS when the device is not in-service or is being maintained.

4. Documentation ~~showing that~~describing the System performance resulting from a single component failure in the RAS, except for limited impact RAS, when the RAS is intended to operate. A single component failure in a RAS not determined to be limited impact must not prevent the BES from meeting the same performance requirements (defined in Reliability Standard TPL-001-4 or its successor) as those required for the events and conditions for which the RAS is designed. The documentation should describe or illustrate how the design achieves this objective.

~~4.1. _____, does not prevent the BES from meeting the same performance requirements (defined in Reliability Standard TPL-001-4 or its successor) as those required for the events and conditions for which the RAS is designed. The documentation should describe or illustrate how the design achieves this objective.~~
~~[Reference NERC Reliability Standard PRC-012, R1.3]~~

5. Documentation describing the functional testing process.

IV. RAS Retirement

The following checklist identifies RAS information that the RAS-entity shall document and provide to each reviewing RC.

1. Information necessary to ensure that the RC is able to understand the physical and electrical location of the RAS and related facilities.
2. A summary of applicable technical studies and technical justifications upon which the decision to retire the RAS is based.
3. Anticipated date of RAS retirement.

Attachment 2 Reliability Coordinator RAS Review Checklist

The following checklist identifies reliability-related considerations for the Reliability Coordinator (RC) to review and verify for each new or functionally modified⁴ Remedial Action Scheme (RAS). The RC review is not limited to the checklist items and the RC may request additional information on any reliability issue related to the RAS aspect of the RAS as well as any reliability issue related to the RAS. If a checklist item is not relevant to a particular RAS, it should be noted as "Not Applicable." If reliability considerations are identified during the review, the considerations and the proposed resolutions should be documented with the remaining applicable Attachment 2 items.

I. Design

1. The RAS actions satisfy performance objectives for the scope of events and conditions that the RAS is intended to mitigate.
2. The RAS arming conditions, if applicable, are appropriate to its System performance objectives.
3. The RAS avoids adverse interactions with other RAS, and protection and control systems.
4. The effects of RAS incorrect operation, including inadvertent operation and failure to operate ~~(if non-operation for RAS single component failure is acceptable)~~,⁴ have been identified.
5. The Determination whether or not the RAS is "limited impact."⁵ A RAS designated as limited impact cannot, by inadvertent operation or failure to operate, cause or contribute to BES Cascading, uncontrolled separation, angular instability, voltage instability, voltage collapse, or unacceptably damped oscillations.
- 5-6. Except for limited impact RAS as determined by the RC, the possible inadvertent operation of the RAS resulting from any single RAS component malfunction satisfies all of the following:
 - a. The BES shall remain stable.
 - b. Cascading shall not occur.

⁴ Functionally Modified:

Any modification to a RAS consisting of any of the following:

- Changes to System conditions or contingencies monitored by the RAS
- Changes to the actions the RAS is designed to initiate
- Changes to RAS hardware beyond ~~the~~ in-kind replacement of existing components ~~that preserve the original functionality is a functional modification.~~
- Changes to RAS logic beyond error correcting
- Changes to redundancy levels; i.e., addition or removal

⁵ A RAS designated as "limited impact" cannot, by inadvertent operation or failure to operate, cause or contribute to BES Cascading, uncontrolled separation, angular instability, voltage instability, voltage collapse, or unacceptably damped oscillations. A RAS implemented prior to the effective date of this standard that has been through the regional review process and designated as Type 3 in NPCC, Type 2 in ERCOT, or LAPS in WECC will be recognized as limited impact.

- c. Applicable Facility Ratings shall not be exceeded.
- d. BES voltages shall be within post-Contingency voltage limits and post-Contingency voltage deviation limits as established by the Transmission Planner and the Planning Coordinator.
- e. Transient voltage responses shall be within acceptable limits as established by the Transmission Planner and the Planning Coordinator.

~~6.7.~~_____ The effects of future BES modifications on the design and operation of the RAS have been identified, where applicable.

II. Implementation

- 1. The implementation of RAS logic appropriately correlates desired actions (outputs) with events and conditions (inputs).
- 2. The timing of RAS action(s) is appropriate to its BES performance objectives.

3. Except for limited impact RAS as determined by the RC, a single component failure in a RAS does not prevent the BES from meeting the same performance requirements as those required for the events and conditions for which the RAS is designed.
4. The RAS design facilitates periodic testing and maintenance.
5. The mechanism or procedure by which the RAS is armed is clearly described, and is appropriate for reliable arming and operation of the RAS for the conditions and events for which it is designed to operate.

III. RAS Retirement

RAS retirement reviews should assure that there is adequate justification for why a RAS is no longer needed.

**Attachment 3
Database Information**

1. RAS name.
2. Each RAS-entity and contact information.
3. Expected or actual in-service date; most recent RC-approval date (Requirement R3); most recent evaluation date (Requirement R4); and date of retirement, if applicable.
4. System performance issue or reason for installing the RAS (e.g., thermal overload, angular instability, poor oscillation damping, voltage instability, under- or over-voltage, or slow voltage recovery).
5. Description of the Contingencies or System conditions for which the RAS was designed (i.e., initiating conditions).
6. Action(s) to be taken by the RAS.
7. Identification of limited impact⁶ RAS.
 - ~~2.a. RAS entity and contact information.~~
 - ~~3.a. Expected or actual in-service date; most recent RC approval date (Requirement R3); most recent evaluation date (Requirement R4); and date of retirement, if applicable.~~
 - ~~4.a. System performance issue or reason for installing the RAS (e.g., thermal overload, angular instability, poor oscillation damping, voltage instability, under- or over-voltage, or slow voltage recovery).~~
 - ~~5.a. Description of the Contingencies or System conditions for which the RAS was designed (i.e., initiating conditions).~~
 - ~~6.a. Action(s) to be taken by the RAS.~~
- 7.8. Any additional explanation relevant to high-level understanding of the RAS.

⁶ A RAS designated as “limited impact” cannot, by inadvertent operation or failure to operate, cause or contribute to BES Cascading, uncontrolled separation, angular instability, voltage instability, voltage collapse, or unacceptably damped oscillations. A RAS implemented prior to the effective date of this standard that has been through the regional review process and designated as Type 3 in NPCC, Type 2 in ERCOT, or LAPS in WECC will be recognized as limited impact.

Technical Justifications for Requirements

Applicability

4.1.4 RAS-1 Reliability Coordinator

The Reliability Coordinator (RC) is the best-suited functional entity to perform the Remedial Action Scheme (RAS) review because the RC has the widest-area reliability perspective of all functional entities and an awareness of reliability issues in neighboring RC Areas. The Wide-Area purview better facilitates the evaluation of interactions among separate RAS, as well as interactions among RAS and other protection and control systems. The selection of the RC also minimizes the possibility of a conflict of interest that could exist because of business relationships among the RAS-entity, Planning Coordinator, Transmission Planner, or other entities involved in the planning or implementation of a RAS. The RC is also less likely to be a stakeholder in any given RAS and can therefore maintain objective independence.

~~The purpose of the RAS entity is to be the single information conduit with each reviewing Reliability Coordinator (RC) for all RAS owners for each RAS. The RAS entity needs to coordinate all review materials and any presentations. If all of the RAS equipment has a single owner, then the RAS entity is the same as the RAS owner and that owner speaks for itself.~~

4.1.2 Planning Coordinator

The Planning Coordinator (PC) is the best-suited functional entity to perform the RAS evaluation to verify the continued effectiveness and coordination of the RAS, its inadvertent operation performance, and the performance for a single component failure. The items that must be addressed in the evaluations include: 1) RAS mitigation of the System condition(s) or event(s) for which it was designed; 2) RAS avoidance of adverse interactions with other RAS and with protection and control systems; 3) the impact of inadvertent operation; and 4) the impact of a single component failure. The evaluation of these items involves modeling and studying the interconnected transmission system, similar to the planning analyses performed by PCs.

4.1.3 RAS-entity

The RAS-entity is any Transmission Owner, Generator Owner, or Distribution Provider that owns all or part of a RAS. If all of the RAS (RAS components) have a single owner, then that RAS-entity has sole responsibility for all the activities assigned within the standard to the RAS-entity. If the RAS equipment has (RAS components) have more than one owner, then each separate RAS equipment owner is a RAS owner. The RAS entity will always be one of these RAS owners. A RAS entity will be selected by all RAS owners and, traditionally, has usually been the owner of the RAS controller and a Transmission Owner. If a specific RAS entity is not component owner is a RAS-entity and is obligated to participate in various activities identified by the RAS owners, the RC will assign that function to the RAS owner who provides the Requirements.

The standard does not stipulate particular compliance methods. RAS-entities have the option of collaborating to fulfill their responsibilities for each applicable requirement. Such collaboration and coordination may promote efficiency in achieving the reliability objectives of the

requirements; however, the individual RAS-entity must be able to demonstrate its participation for compliance. As an example, the individual RAS-entities could collaborate to produce and submit a single, coordinated Attachment 1 to the reviewing RC pursuant to Requirement R1 to initiate the RAS review material to them process.

The RAS owner(s); i.e., Transmission Owner(s), Generator Owner(s), or Distribution Provider(s) who are not the RAS entity still have responsibilities as assigned in other NERC Reliability Standards, such as equipment maintenance. In addition, when RAS modifications are needed, each RAS owner of RAS equipment that must be modified must accept the specific responsibilities assigned to them as described in the necessary Corrective Action Plan (CAP), or otherwise as described in the revised Attachment 1.

Requirement R1

Each RAS is unique and its action(s) can have a significant impact on the reliability and integrity of the Bulk Electric System (BES); therefore, a review of a proposed new RAS or an existing RAS proposed for functional modification, or retirement (removal from service) must be completed prior to implementation.

Any modificationFunctional modifications consists of any of the following:

- Changes to System conditions or Contingencies monitored by the RAS
- Changes to the actions the RAS is designed to initiate
- Changes to RAS hardware beyond the substitution in-kind replacement of existing components
- Changes to RAS logic beyond error correcting
- Changes to redundancy levels; i.e., addition or removal

An example indicating the limits of an in-kind replacement of a RAS component is the replacement of one relay (or other device) with a relay (or other device) that merely preserve uses similar functions. For instance, if a RAS included a CO-11 relay which was replaced by an IAC-53 relay, that would be an in-kind replacement. If the CO-11 relay were replaced by a microprocessor SEL-451 relay that used only the same functions as the original functionality is CO-11 relay, that would also be an in-kind replacement; however, if the SEL-451 relay was used to add new logic to what the CO-11 relay had provided, then the replacement relay would be a functional modification.

Changes to RAS pickup levels that require no other scheme changes are not considered a functional modification. AnyFor example, System conditions require a RAS to be armed when the combined flow on two lines exceeds 500 MW. If a periodic evaluation pursuant to Requirement R4, or other assessment, indicates that the arming level should be reduced to 450 MW without requiring any other RAS changes that would not be a functional modification. Similarly, if a RAS is designed to shed load to reduce loading on a particular line below 1000 amps, then a change in RAS logic such as newthe load shedding trigger from 1000 amps to 1100 amps would not be a functional modification.

Another example illustrates a case where a System change may result in a RAS functional change. Assume that a generation center is connected to a load center through two transmission lines. The lines are not rated to accommodate full plant output if one line is out of service, so a RAS monitors the status of both lines and trips or ramps down the generation to a safe level following loss of either line. Later, one of the lines is tapped to serve additional load. The System that the RAS impacts now includes three lines, loss of any of which is likely to still require generation reduction. The modified RAS will need to monitor all three lines (add two line terminal status inputs or outputs, or any other modification that affects overall RAS functionality, or redundancy level as documented in the original submission to the RAS) and the logic to recognize the specific line outages would change, while the generation reduction (RAS output) requirement may or may not change, depending on which line is out of service. These required RAS changes would be a functional modification.

Any functional modification to a RAS will need to be reviewed and approved through the process described in Requirements R1, R2, and R3. The need for review ~~is~~ such functional modifications. RAS modifications may be identified by a CAP pursuant to Requirement R6 beyond the substitution of components that merely preserve the original functionality are functional in several ways including but not limited to the Planning evaluations pursuant to R4, incorrect operations pursuant to R5, a test failure pursuant to R8, or Planning assessments related to future additions or modifications. RAS removal is essentially a form of RAS functional modification. Any RAS proposed for removal needs to be evaluated under the RAS Retirement section of the Attachment 1 checklist.

of other facilities.

To facilitate a review that promotes reliability, the RAS-entity(ies) must provide the reviewer with sufficient details of the RAS design, function, and operation. This data and supporting documentation are identified in Attachment 1 of this standard, and Requirement R1 mandates that the RAS-entity(ies) provide them to the reviewing Reliability Coordinator (RC). The RC that coordinates the area where the RAS is located is responsible for the review. In cases where a RAS crosses multiple RC Area boundaries, each affected RC is responsible for conducting either individual reviews or a coordinated review.

Requirement R1 does not specify how far in advance of implementation the RAS-entity(ies) must provide Attachment 1 data to the reviewing RC. The information will need to be submitted early enough to allow RC review in the allotted time pursuant to Requirement R2, including resolution of any reliability issues that might be identified, in order to obtain approval of the reviewing RC. Expedient submittal of this information is in the interest of each RAS-~~owner~~entity to effect a timely implementation.

Requirement R2

Requirement R2 mandates that the RC perform reviews of all proposed new RAS and existing RAS proposed for functional modification, or retirement (removal from service) in its RC Area.

RAS are unique and customized assemblages of protection and control equipment. As such, they have a potential to introduce reliability risks to the BES, if not carefully planned, designed, and installed. -A RAS may be installed to address a reliability issue, or achieve an economic or operational advantage, and could introduce reliability risks that might not be apparent to a RAS-owner(s)-entity(ies). An independent review by a multi-disciplinary panel of subject matter experts with planning, operations, protection, telecommunications, and equipment expertise is an effective means of identifying risks and recommending RAS modifications when necessary.

The RC is the functional entity best suited to perform the RAS reviews because it has the widest-area reliability perspective of all functional entities and an awareness of reliability issues in neighboring RC Areas. This Wide Area purview ~~provides continuity in the review process and~~ facilitates the evaluation of interactions among separate RAS as well as interactions among the RAS and other protection and control systems.

The selection of the RC also minimizes the possibility of a “conflict of interest” that could exist because of business relationships among the RAS-entity, Planning Coordinator (PC), Transmission Planner (TP), or other entities that are likely to be involved in the planning or implementation of a RAS. The RC may request assistance in RAS reviews from other parties such as the PC(s) or regional technical groups (e.g., Regional Entities); however, the RC retains responsibility for compliance with the requirement.

It is recognized that the RC does not possess more information or ability than anticipated by their functional registration as designated by NERC. The NERC Functional Model is a guideline for the development of standards and their applicability and does not contain compliance requirements. If Reliability Standards address functions that are not described in the model, the Reliability Standard requirements take precedence over the Functional Model. For further reference, please see the Introduction section of NERC’s Reliability Functional Model, Version 5, November 2009.

Attachment 2 of this standard is a checklist for assisting the RC in identifying design and implementation aspects of a RAS, and for facilitating consistent reviews of each RAS submitted ~~RAS~~ for review. The time frame of four-full-calendar months is consistent with current utility practice; however, flexibility is provided by allowing the parties to negotiate a different schedule for the review. Note, an RC may need to include this task in its reliability plan(s) for the NERC Region(s) in which it is located.

Requirement R3

Requirement R3 mandates that ~~the~~each RAS-entity ~~addresses~~resolve all reliability issues (pertaining to its RAS) identified ~~by the reviewing RC~~ during the RAS review, ~~and obtain approval from the reviewing RC that the RAS implementation can proceed. The review by the RC is intended to identify reliability issues that must be resolved before the RAS can be put in service. by the reviewing Reliability Coordinators.~~ Examples of reliability issues include a lack of dependability, security, or coordination. RC approval of a RAS is considered to be obtained when the reviewing RC's feedback to each RAS-entity indicates that either no reliability issues were identified during the review or all identified reliability issues were resolved to the RC's satisfaction.

Dependability is a component of reliability ~~and~~that is the measure of certainty of a device to operate when required. If a RAS is installed to meet performance requirements of NERC Reliability Standards, a failure of the RAS to operate when intended would put the System at risk of violating NERC Reliability Standards if specified Contingency(ies) or System conditions occur. This risk is mitigated by designing the RAS so that it will accomplish the intended purpose while experiencing a single RAS component failure. This is often accomplished through redundancy. Other strategies for providing dependability include "over-tripping" load or generation, or alternative automatic backup schemes.

Security is a component of reliability ~~and~~that is the measure of certainty of a device to not operate inadvertently. False or inadvertent operation of a RAS results in taking a programmed action without the appropriate arming conditions, occurrence of specified Contingency(ies), or System conditions expected to trigger the RAS action. Typical RAS actions include shedding load or generation or re-configuring the System. Such actions, if inadvertently taken, are undesirable and may put the System in a less secure state. Worst case impacts from inadvertent operation often occur if all programmed RAS actions occur. If the System performance still satisfies PRC-012-2 Requirement R4, Part 4.3, no additional mitigation is required. ~~Security enhancements to the RAS design, such as voting schemes, are acceptable mitigations against inadvertent operations.~~

Any reliability issue identified during the review must be resolved before implementing the RAS to avoid placing the System at unacceptable risk. The RAS-entity ~~(and any other RAS owner)~~ or the reviewing RC(s) may have alternative ideas or methods available to resolve the issue(s). In either case, the concern needs to be resolved in deference to reliability, and the RC has the final decision.

A specific time period for the RAS-entity to respond to the RC(s) review is not necessary because an expeditious response is in the interest of each RAS-~~owner~~entity to effect a timely implementation.

Requirement R4

Requirement R4 mandates that an evaluation of each RAS be performed at least once every 60-~~full-~~calendar months. The purpose of a periodic RAS evaluation is to verify the continued effectiveness and coordination of the RAS, as well as to verify that requirements for BES performance following inadvertent RAS operation and single component failure continue to be satisfied. A periodic evaluation is required because changes in ~~system~~System topology or operating conditions ~~that have occurred since the previous RAS evaluation (or initial review)~~ may change the effectiveness of a RAS or the way it interacts with and impacts the BES.

~~A period~~ Requirement R4 also clarifies that the RAS single component failure and inadvertent operation tests do not apply to RAS which are determined to be limited impact. Requiring a limited impact RAS to meet the single component failure and inadvertent operation tests would just add complexity to the design with little or no improvement in the reliability of the BES.

~~For existing RAS, the initial performance of Requirement R4 must be completed within sixty-~~full-~~calendar months of the effective date of PRC-012-2. For new or functionally modified RAS, the initial performance of the requirement must be completed within sixty full calendar months of the RAS approval date by the reviewing RC(s). Sixty full~~ calendar months was selected as the maximum time frame between evaluations based on the time frames for similar requirements in ~~NERC~~ Reliability Standards PRC-006, PRC-010, and PRC-014. The RAS evaluation ~~should~~can be performed sooner if it is determined that material changes to System topology or System operating conditions ~~that~~ could potentially impact the effectiveness or coordination of the RAS ~~have occurred since the previous RAS evaluation or will occur before the next scheduled evaluation.~~ The periodic RAS evaluation will typically lead to one of the following outcomes: 1) affirmation that the existing RAS is effective; 2) identification of changes needed to the existing RAS; or, 3) justification for RAS retirement.

The items required to be addressed in the evaluations (Requirement R4, Parts 4.1.1 through 4.1.4) are planning analyses that may involve modeling of the interconnected transmission system to assess BES performance; ~~consequently, the TP. The PC~~ is the functional entity best suited to perform the analyses. ~~because they have a wide-area planning perspective.~~ To promote reliability, the ~~TPPC~~ is required to provide the ~~RAS owner(s) and the reviewing RC(s) with the~~ results of ~~each~~the evaluation.

to each RAS-entity and reviewing RC, as well as each impacted Planning Coordinator and Transmission Planner.

The intent of Requirement R4, Part 4.1.3 is to require that the possible inadvertent operation of the RAS, ~~(other than limited impact RAS),~~ caused by the malfunction of a single component of the RAS, meet the same System performance requirements as those required for the Contingency(ies) or System conditions for which it is designed. If the RAS is designed to meet one of the planning events (P0-P7) in TPL-001-4, the possible inadvertent operation of the RAS must meet the same performance requirements listed in the standard for that planning event.

The requirement clarifies that the inadvertent operation to be considered is only that caused by the malfunction of a single RAS component. This allows features to be designed into the RAS to improve security, such that inadvertent operation due to malfunction of a single component is prevented ~~or else; otherwise,~~ the RAS inadvertent operation ~~satisfies~~must satisfy Requirement R4, Part 4.1.3.

The intent of Requirement R4, Part 4.1.3 is also to require that the possible inadvertent operation of the RAS (other than limited impact RAS) installed for an extreme event in TPL-001-4 or for some other Contingency or System conditions not defined in TPL-001-4 (therefore without performance requirements), meet the minimum System performance requirements of Category P7 in Table 1 of NERC Reliability Standard TPL-001-4. However, instead of referring to the TPL standard, the requirement lists the System performance requirements that a potential inadvertent operation must satisfy. The performance requirements listed (Requirement R4, Parts 4.1.3.1 – 4.1.3.5) are the ones that are common to all planning events (P0-P7) listed in TPL-001-4.

With reference to Requirement 4, Part 4.1.3, note that the only differences in performance requirements among the TPL (P0-P7) events (not common to all of them) concern Non-Consequential Load Loss and interruption of Firm Transmission Service. Performance is not necessary for Requirement R4, Part 4.1.3 to specify performance requirements ~~is related to~~ these areas ~~are not relevant. Because a~~ RAS is only allowed to drop non-consequential load or interrupt Firm Transmission Service ~~can do that only~~ if that action is allowed for the Contingency for which it is designed. Therefore, the inadvertent operation should automatically meet Non-Consequential Load Loss or interrupting Firm Transmission Service performance requirements for the Contingency(ies) for which it was designed.

Part 4.1.4 requires that a single component failure in the RAS, (other than limited impact RAS), when the RAS is intended to operate, does not prevent the BES from meeting the same performance requirements (defined in Reliability Standard TPL-001-4 or its successor) as those required for the events and conditions for which the RAS is designed. This analysis is needed to ensure that changing System conditions do not result in the single component failure requirement not being met.

Requirements for inadvertent RAS operation (Requirement R4, Part 4.1.3) and single component failure (Requirement R4, Part 4.1.4) are reviewed by the reviewing RC(s) before a new or functionally modified RAS is placed in ~~service~~, and are typically satisfied by specific design considerations. Although the scope of the periodic evaluation does not include a new design review, it is possible that a design which previously satisfied requirements for

inadvertent RAS operation and single component failure may fail to satisfy these requirements at a later ~~point in~~ time, and must be evaluated with respect to the current System. For example, if the actions of a particular RAS include tripping load, ~~System changes~~load growth could occur over time that ~~impact~~impacts the amount of load ~~originally to be~~ tripped ~~by a particular RAS output.~~ These changes could result in ~~inadvertent activation of that output, therefore,~~ tripping too much load upon inadvertent operation and result in violations of Facility Ratings. Alternatively, the RAS might be designed to trip more load than necessary (i.e., “over trip”) in order to satisfy single-~~component-~~failure requirements. ~~System changes~~ could result in too little load being tripped ~~at affected locations and result in~~and unacceptable BES performance if one of the loads failed to trip.

~~Requirement R5~~

Requirement R5

The correct operation of a RAS is important to maintain the reliability and integrity of the BES. Any incorrect operation of a RAS indicates the RAS effectiveness and/or coordination may have been compromised. Therefore, all operations of a RAS and failures of a RAS to operate when expected must be analyzed to verify that the RAS operation was consistent with its intended functionality and design.

A RAS operational performance analysis is intended to: (1) verify RAS operation is consistent with implemented design; or (2) identify RAS performance deficiencies that manifested in the incorrect RAS operation or failure of RAS to operate when expected.

The 120-full calendar day time frame for the completion of RAS operational performance analysis aligns with the time frame established in Requirement R1 from PRC-004-4 regarding the investigation of a Protection System Misoperation; however, flexibility is provided by allowing the parties to negotiate a different schedule for the analysis. To promote reliability, the RAS-~~owner~~entity(s) is required to provide the results of RAS operational performance analyses to its reviewing RC(s).

The RAS-~~owner~~entity(ies) may need to collaborate with ~~their~~its associated ~~TP~~Transmission Planner to comprehensively analyze RAS operational performance. This is because a RAS operational performance analysis involves verifying that the RAS operation ~~triggers and responds~~ (Parts was triggered correctly (Part 5.1.1), responded as designed (Part 5.1.2)), and that the resulting BES response (Parts 5.1.3, and 5.1.4) ~~is~~was consistent with the intended functionality and design of the RAS. Ideally, when there is more than one RAS-entity for a RAS, the RAS-entities would collaborate on the operational performance analysis.

Requirement R6

~~Deficiencies-RAS deficiencies potentially pose a reliability risk to the BES. RAS deficiencies may be identified either in the periodic RAS evaluation conducted by the TPPC in Requirement R4, or in the operational analysis conducted by the RAS-owner(s) pursuant to entity in Requirement R5, are likely to pose a reliability risk to the BES, or in the functional test performed by the RAS-entity(ies) in Requirement R8. To mitigate this potential reliability riskrisks, Requirement R6 mandates that each RAS-owner develop-entity participate in developing a CAP that establishes the mitigation actions and timetable necessary to address the deficiency.~~

~~The RAS-entity(ies) that owns the RAS components, is responsible for the RAS equipment, and is in the best position to develop the timelines and perform the necessary work to correct RAS deficiencies. If necessary, the RAS-entity(ies) may request assistance with development of the CAP requires that afrom other parties such as its Transmission Planner or Planning Coordinator; however, the RAS-entity has the responsibility for compliance with this requirement.~~

~~A CAP may require functional changechanges be made to a RAS. In this case, Attachment 1 information must be submitted to the reviewing RC(s)-prior), an RC review must be performed to placingobtain RC approval before the RAS-entity can place RAS modifications in-service, per RequirementRequirements R1-~~

~~, R2, and R3.~~

~~Depending on the complexity of the issues, development of a CAP may require study, engineering, or consulting work. A timeframe of six-full-calendar months is allotted to allow enough time for RAS-ownerentity collaboration on the CAP development, while ensuring that deficiencies are addressed in a reasonable time. A RAS deficiency may require the RC or Transmission Operator to impose operating restrictions so the System can operate in a reliable way until the RAS deficiency is resolved. SuchThe possibility of such operating restrictions will incent the RAS-ownerentity to resolve the issue as quickly as possible.~~

~~A CAP documents a RAS performance deficiency, the actions to correct the deficiency with identified tasks, and the time frame for completion.~~

The following are example situations of when a CAP is required:

- A determination after a RAS operation/non-operation investigation that the RAS did not meet performance expectations.~~The RAS or~~ did not operate as designed.
- Periodic planning assessment reveals RAS changes are necessary to correct performance or coordination issues.
- Equipment failures.

~~•~~

~~Functional testing identifies that a RAS is not operating as designed.~~

Requirement R7

~~Implementation of a CAP ensures~~ Requirement R7 mandates that each RAS-entity implement its CAP developed in Requirement R6 which mitigates the deficiencies ~~are corrected by following a documented timetable of identified~~ in Requirements R4, R5, or R8. By definition, a CAP is: "A list of actions- ~~If necessary, the-~~ and an associated timetable for implementation to remedy a specific problem."

A CAP can be modified if necessary to account for adjustments to the actions or scheduled timetable of activities. ~~Operating restrictions imposed by the RC-~~ If the CAP is changed, the RAS-entity must notify the reviewing Reliability Coordinator(s). The RAS-entity must also ~~incent RAS owners to mitigate the issues and provide assurance that implementation is-~~ notify the Reliability Coordinator(s) when the CAP has been completed.

The implementation of a properly developed CAP ensures that RAS deficiencies are mitigated in a timely manner. A RAS deficiency may require the RC or Transmission Operator to impose operating restrictions so the System can operate in a reliable way until the CAP is completed. The possibility of such operating restrictions will incent the RAS-entity to complete the CAP as quickly as possible.

Requirement R8

The reliability objective of Requirement R8 is to test the non-Protection System components of a RAS (controllers such as programmable logic controllers (PLCs)) and to verify the overall performance of the RAS through functional testing. Functional tests validate RAS operation by ensuring System states are detected and processed, and that actions taken by the controls are correct and occur within the expected time using the in-service settings and logic. Functional testing is aimed at assuring overall RAS performance and not the component focused testing contained in the PRC-005 maintenance standard.

Since the functional test operates the RAS under controlled conditions with known System states and expected results, testing and analysis can be performed ~~without~~ with minimum impact to the BES and should align with expected results. The RAS-~~owner~~ entity is in the best position to determine the testing procedure and schedule due to their overall knowledge of the RAS design, installation, and functionality. Periodic testing provides the RAS-~~owner~~ entity assurance that latent failures may be identified and also promotes identification of changes in the System that may have introduced latent failures.

~~While the~~

~~The six-~~ and twelve full calendar-~~year~~ functional testing ~~interval is~~ intervals are greater than the annual or bi-annual periodic testing performed in some NERC Regions, ~~the drafting team selected it because it is consistent with some of the maintenance intervals of various Protection System and Automatic Reclosing components established in PRC-005. Consequently, this interval provides entities the opportunity to design their RAS functional testing programs such that it coincides with the testing of any associated PRC-005 components. The six calendar year interval is.~~ However, these intervals are a balance between the resources required to perform the testing and the potential reliability impacts to the BES created by undiscovered latent failures that could cause an incorrect operation of the RAS.

Longer test intervals for limited impact RAS are acceptable because incorrect operations or failures to operate present a low reliability risk to the Bulk Power System.

Functional testing is not synonymous with end-to-end testing. End-to-end testing is an acceptable method but ~~it~~ may not be feasible for many RAS. When end-to-end testing is not possible, a RAS ~~owner~~entity may use a segmented functional testing approach. The segments can be tested individually negating the need for complex maintenance schedules. In addition, actual RAS operation(s) can be used to fulfill the functional testing requirement. If a RAS does not operate in its entirety during a System event or System conditions do not allow an end-to-end systemscheme test ~~the, then~~ the segmented approach should be used to fulfill this Requirement. Functional testing includes the testing of all RAS inputs used for detection, arming, operating, and data collection. Functional testing also includes the processing by the logic and infrastructure of a RAS as well as the action initiation by RAS outputs to address the System condition(s) for which the RAS is designed. All segments and components of a RAS must be tested or have proven operations within a six-calendar-year interval to demonstrate compliance with the Requirement.

~~As an example, consider a RAS implemented with one PLC that senses System conditions such as loading and line status from many locations. At one of these locations, a line protective relay (a component of a Protection System and included in the Protection System Maintenance Program (PSMP) of a RAS owner) receives commands from the RAS PLC and sends data over non Protection System communications infrastructure to operate a breaker. A functional test would send signals of simulated System conditions to the PLC to initiate an operate command to the protective relay, thus operating its associated breaker. This action verifies RAS action, verifies PLC control logic, and verifies RAS communications from PLC to relay. To complete this portion of a functional test, application of external testing signals to the protective relay, verified at the PLC are necessary to confirm full functioning of the RAS segment being tested. This example describes a test for one segment of the RAS, the remaining segments would also require testing the applicable maximum test interval to demonstrate compliance with the Requirement.~~

As an example of segment testing, consider a RAS controller implemented using a PLC that receives System data, such as loading or line status, from distributed devices. These distributed devices could include meters, protective relays, or other PLCs. In this example RAS, a line protective relay is used to provide an analog metering quantity to the RAS control PLC. A functional test would verify that the System data is received from the protective relay by the PLC, processed by the PLC, and that PLC outputs are appropriate. There is no need to verify the protective relay's ability to measure the power system quantities, as this is a requirement for Protection Systems used as RAS in PRC-005, Table 1-1, Component Type – Protective Relay. Rather the functional test is focused on the use of the protective relay data at the PLC, including the communications data path from relay to PLC if this data is essential for proper RAS operation. Additionally, if the control signal back to the protective relay is also critical to the proper functioning of this example RAS, then that path is also verified up-to the protective

relay. This example describes a test for one segment of a RAS which verifies RAS action, verifies PLC control logic, and verifies RAS communications.

IEEE C37.233, "IEEE Guide for Power System Protection Testing," 2009 section 8 (particularly 8.3-8.5), provides an overview of functional testing. -The following opens section 8.3:

Proper implementation requires a well-defined and coordinated test plan for performance evaluation of the overall system during agreed maintenance intervals. The maintenance test plan, also referred to as functional system testing, should include inputs, outputs, communication, logic, and throughput timing tests. The functional tests are generally not component-level testing, rather overall system testing. Some of the input tests may need to be done ahead of overall system testing to the extent that the tests affect the overall performance. The test coordinator or coordinators need to have full knowledge of the intent of the scheme, isolation points, simulation scenarios, and restoration to normal procedures.

The concept is to validate the overall performance of the scheme, including the logic where applicable, to validate the overall throughput times against system modeling for different types of ~~contingencies~~Contingencies, and to verify scheme performance as well as the inputs and outputs.

If a RAS passes a functional test, it is not necessary to provide that specific information to the RC because that is the expected result and requires no further action. If a segment of a RAS fails a functional test, the status of that degraded RAS is required to be reported (in Real-time) to the Transmission Operator via PRC-001, Requirement R6, then to the RC via TOP-001-~~2~~, Requirement R5-3, Requirement R8. See Phase 2 of Project 2007-06 for the mapping document from PRC-001 to other standards regarding notification of RC by TOP if a deficiency is found during testing. Consequently, it is not necessary to include a similar requirement in this standard.

The initial test interval begins on the effective date of the standard pursuant to the implementation plan. Subsequently, the maximum allowable interval between functional tests is six full calendar years for RAS that are not designated as limited impact RAS and twelve full calendar years for RAS that are designated as limited impact RAS. The interval between tests begins on the date of the most recent successful test for each individual segment or end-to-end test. A successful test of one segment only resets the test interval clock for that segment. A RAS-entity may choose to count a correct RAS operation as a qualifying functional test for those RAS segments which operate. If a System event causes a correct, but partial RAS operation, separate functional tests of the segments that did not operate are still required within the maximum test interval that started on the date of the previous successful test of those (non-operating) segments in order to be compliant with Requirement R8.

Requirement R9

The RAS database required to be maintained by the RC in Requirement R9 ensures information regarding existing RAS is available to entities with a potential reliability need. Attachment 3

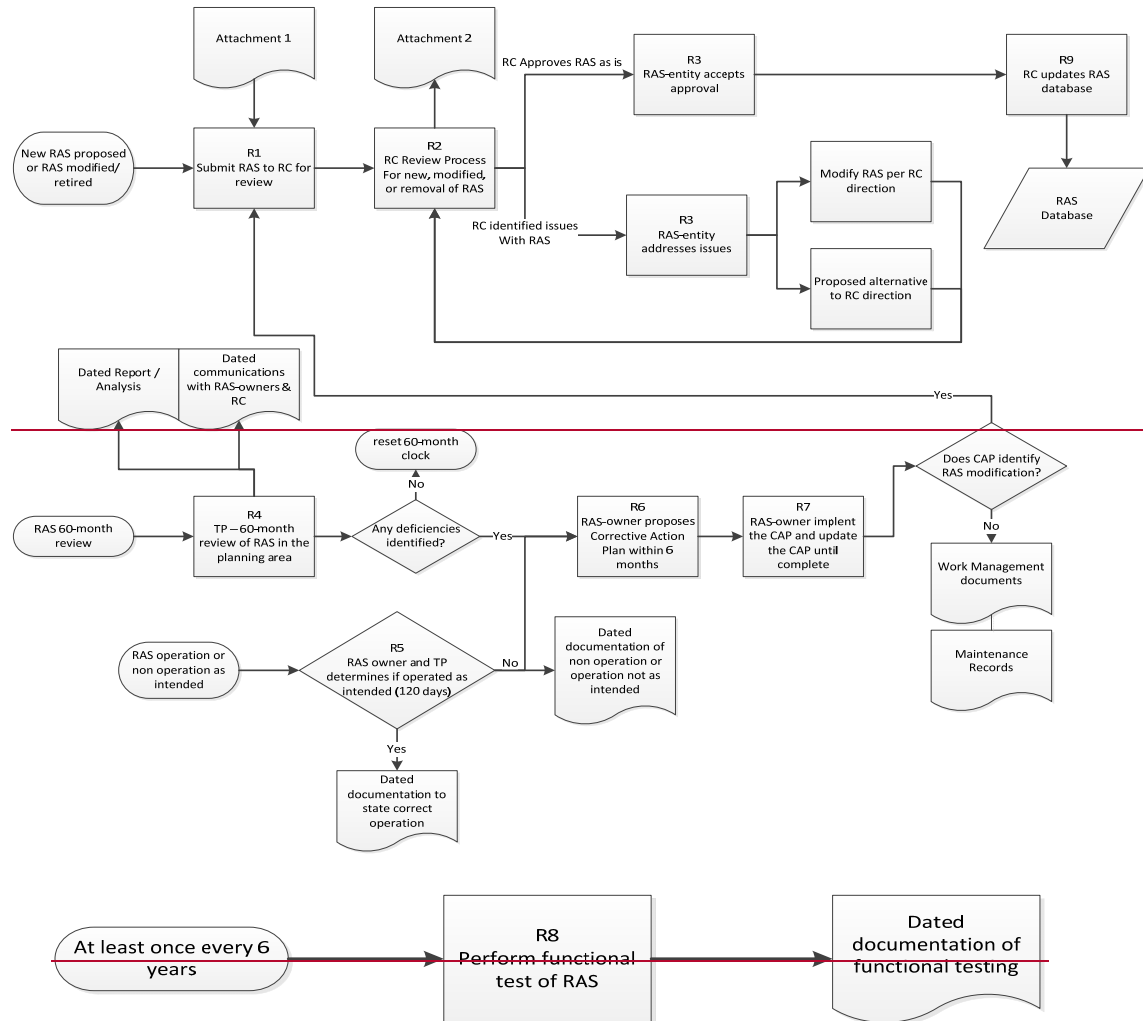
contains the minimum information that is required to be included about each RAS listed in the database. Additional information can be requested by the RC.

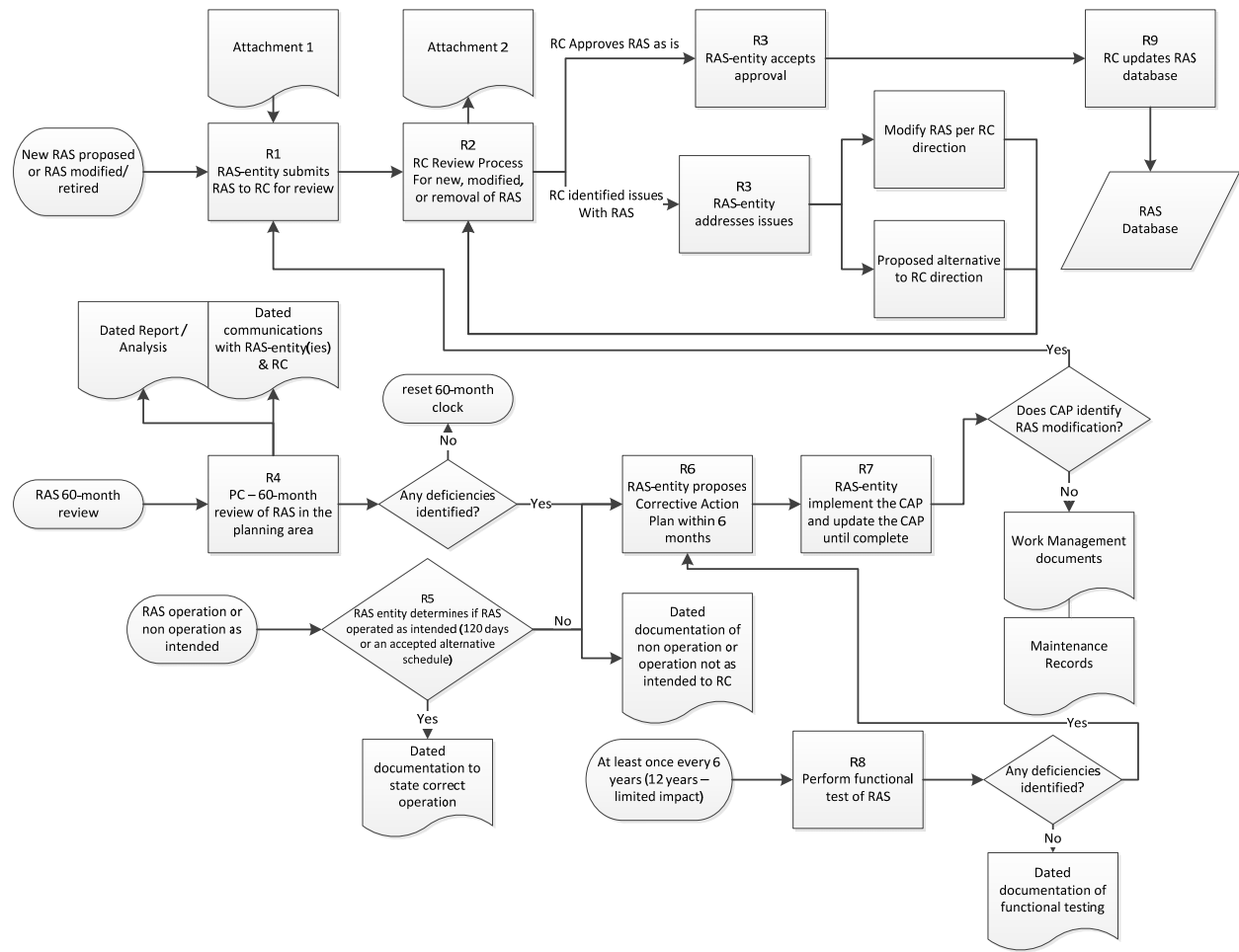
The information provided is sufficient for an entity with a reliability need to evaluate whether the RAS can impact its System. For example, a RAS performing generation rejection to mitigate an overload on a transmission line may cause a power flow change within an adjacent entity area. This entity should be able to evaluate the risk that a RAS poses to its System from the high-level information provided in the RAS database.

The RAS database does not need to list detailed settings or modeling information, but the description of the System performance issues, System conditions, and the intended corrective actions must be included. If additional details about the RAS operation are required, the entity may obtain the contact information of the RAS-entity from the RC.

Process Flow Diagram

The following diagrams depict the diagram below depicts the process flow of the PRC-012-2 requirements.





Technical Justifications for Attachment 1 Content Supporting Documentation for RAS Review

To perform an adequate review of the expected reliability implications of a Remedial Action Scheme (RAS), it is necessary for the RAS-owner(s) to provide a detailed list of information describing the RAS to the ~~designated RAS entity, reviewing RC~~. If there are multiple ~~owners of the RAS entities for a single RAS~~, information ~~may will~~ be needed from all ~~owners, but a single RAS-owner (designated as the entities~~. Ideally, in such cases, a single RAS-entity) ~~is assigned will take~~ the ~~responsibility of compiling lead to compile all the RAS data and presenting it to the reviewing RC(s)~~. Other RAS-owners may participate in the review, if they choose. identified into a single Attachment 1.

The necessary data ranges from a general overview of the RAS to summarized results of transmission planning studies, to information about hardware used to implement the RAS. Coordination between the RAS and other RAS and protection and control systems will be examined for possible adverse interactions. This review can include wide-ranging electrical design issues involving the specific hardware, logic, telecommunications, and other relevant equipment and controls that make up the RAS.

Attachment 1

The following checklist identifies important RAS information for each new or functionally modified⁷ RAS that the RAS-entity shall document and provide to the RC for review pursuant to Requirement R1. When a RAS has been previously reviewed, only the proposed modifications to that RAS require review; however, it will be helpful to each reviewing RC if the RAS-entity provides a summary of the ~~previously approved existing~~ RAS functionality.

I. General

1. Information such as maps, one-line drawings, substation and schematic drawings that identify the physical and electrical location of the RAS and related facilities.

Provide a description of the RAS to give an overall understanding of the functionality and a map showing the location of the RAS. Identify other protection and control systems requiring coordination with the RAS. See RAS Design below for additional information.

Provide a single-line drawing(s) showing all sites involved. The drawing(s) should provide sufficient information to allow the RC review team to assess design reliability, and should include information such as the bus arrangement, circuit breakers, the

⁷ Functionally Modified: Any modification to a RAS consisting of any of the following:

- Changes to System conditions or contingencies monitored by the RAS
- Changes to the actions the RAS is designed to initiate
- Changes to RAS hardware beyond the in-kind replacement of existing components that preserve the original functionality is a functional modification.
- Changes to RAS logic beyond error correcting
- Changes to redundancy levels; i.e., addition or removal

Supplemental Material

associated switches, etc. For each site, indicate whether detection, logic, action, or a combination of these is present.

2. Functionality of new RAS or proposed functional modifications to existing RAS and documentation of the pre- and post-modified functionality of the RAS.

3. The Corrective Action Plan (CAP) if RAS modifications are proposed in a CAP.
[Reference NERC Reliability Standard PRC-012-2, Requirements R5 and R7]

Provide a description of any functional modifications to a RAS that are part of a CAP that are proposed to address performance deficiency(ies) identified in the periodic evaluation pursuant to Requirement R4, ~~or~~ the analysis of an actual RAS operation pursuant to Requirement R5, or functional test failure pursuant to Requirement R8. A copy of the most recent CAP must be submitted in addition to the other data specified in Attachment 1.

4. Initial data to populate the RAS database.
- a. RAS name
 - b. Each RAS-entity and contact information
 - c. Expected or actual in-service date; most recent (Requirement R3) RC-approval date; most recent 60-full-calendar-month (Requirement R4) evaluation date; and, date of retirement, if applicable
 - d. System performance issue or reason for installing the RAS (*e.g.*, thermal overload, angular instability, poor oscillation damping, voltage instability, under-/over-voltage, slow voltage recovery)
 - e. Description of the ~~contingencies~~Contingencies or System conditions for which the RAS was designed (initiating conditions)
 - f. Corrective action taken by the RAS
 - g. Identification of limited impact⁸ RAS
 - g-h. Any additional explanation relevant to high level understanding of the RAS

Note: This is the same information as is identified in Attachment 3. Supplying the data at this point in the review process ensures a more complete review and minimizes any administrative burden on the reviewing RC(s).

~~II. Functional Description and Transmission Planning Information~~

- ~~1. Contingencies and system conditions that the RAS is intended to remedy.
[Reference NERC Reliability Standards PRC-012, R1.2 and PRC-013, R1.1]~~

II. Functional Description and Transmission Planning Information

1. Contingencies and System conditions that the RAS is intended to remedy.
[Reference NERC Reliability Standards PRC-012, R1.2 and PRC-013, R1.1]

⁸ A RAS designated as “limited impact” cannot, by inadvertent operation or failure to operate, cause or contribute to BES Cascading, uncontrolled separation, angular instability, voltage instability, voltage collapse, or unacceptably damped oscillations. See Attachment 2 for a description of the limited impact determination by the Reliability Coordinator. A RAS implemented prior to the effective date of this standard that has been through the regional review process and designated as Type 3 in NPCC, Type 2 in ERCOT, or LAPS in WECC will be recognized as limited impact.

- a. The System conditions that would result if no RAS action occurred should be identified.
- b. Include a description of the System conditions that should arm the RAS so as to be ready to take action upon subsequent occurrence of the critical ~~system contingencies~~System Contingencies or other operating conditions when RAS action is intended to occur. If no arming conditions are required, this should also be stated.
- c. Event-based RAS are triggered by specific ~~contingencies~~Contingencies that initiate mitigating action. -Condition-based RAS may also be initiated by specific ~~contingencies~~Contingencies, but specific Contingencies are not always required. These triggering Contingencies and/or conditions should be identified.

2. The actions to be taken by the RAS in response to disturbance conditions.

[Reference NERC Reliability Standards PRC-012, R1.2 and PRC-013, R1.2]

Mitigating actions are designed to result in acceptable System performance. -These actions should be identified, including any time constraints and/or “backup” mitigating measures that may be required in case of a single RAS component failure.

3. A summary of technical studies, if applicable, demonstrating that the proposed RAS actions satisfy System performance objectives for the scope of System events and conditions that the RAS is intended to remedy. The technical studies summary shall also include information such as the study year(s), ~~system~~System conditions, and ~~contingencies~~Contingencies analyzed on which the RAS design is based, and when those technical studies were performed. [Reference NEC Reliability Standard PRC-014, R3.2]

Review the scheme purpose and impact to ensure it is (still) necessary, serves the intended purposes, and meets current performance requirements. -While copies of the full, detailed studies may not be necessary, any abbreviated descriptions of the studies must be detailed enough to allow the reviewing RC(s) to be convinced of the need for the scheme and the results of RAS-related operations.

- ~~4. Information regarding any future system plans that will impact the RAS.~~

~~[Reference NERC Reliability Standard PRC-014, R3.2]~~

4. Information regarding any future System plans that will impact the RAS.

[Reference NERC Reliability Standard PRC-014, R3.2]

The RC’s other responsibilities under the NERC Reliability Standards focus on the Operating Horizon, rather than the Planning Horizon. As such, the RC is less likely to be aware of any longer range plans that may have an impact on the proposed RAS. Such knowledge of future Plans is helpful to provide perspective on the capabilities of the RAS.

- ~~5. Documentation showing that the possible inadvertent operation of the RAS resulting from any single RAS component malfunction satisfies all of the following:~~

~~[Reference NERC Reliability Standard PRC-012, R1.4]~~

5. RAS-entity proposed designation as “limited impact” or not.

A RAS designated as limited impact cannot, by inadvertent operation or failure to operate, cause or contribute to BES Cascading, uncontrolled separation, angular instability, voltage instability, voltage collapse, or unacceptably damped oscillations. A RAS implemented prior to the effective date of this standard that has been through the regional review process and designated as Type 3 in NPCC, Type 2 in ERCOT, or LAPS in WECC will be recognized as limited impact for the purposes of Requirement 4, Parts 4.1.3 and 4.1.4.

~~a. The BES shall remain stable.~~

~~b.a. Cascading shall not occur.~~

~~c.a. Applicable Facility Ratings shall not be exceeded.~~

~~d.a. BES voltages shall be within post-Contingency voltage limits and post-Contingency voltage deviation limits as established by the Transmission Planner and the Planning Coordinator.~~

~~e.a. Transient voltage responses shall be within acceptable limits as established by the Transmission Planner and the Planning Coordinator.~~

6. Documentation showing that the possible inadvertent operation of the RAS resulting from any single RAS component malfunction satisfies all of the following: [Reference NERC Reliability Standard PRC-012, R1.4]
- a. The BES shall remain stable.
 - b. Cascading shall not occur.
 - c. Applicable Facility Ratings shall not be exceeded.
 - d. BES voltages shall be within post-Contingency voltage limits and post-Contingency voltage deviation limits as established by the Transmission Planner and the Planning Coordinator.
 - e. Transient voltage responses shall be within acceptable limits as established by the Transmission Planner and the Planning Coordinator.

~~6.7.~~ An evaluation indicating that the RAS settings and operation avoids adverse interactions with other RAS, and protection and control systems.

[Reference NERC Reliability Standards PRC-012, R1.5 and PRC-014, R3.4]

RAS are complex schemes that may take action such as tripping load or generation or re-configuring the ~~system~~System. Many RAS depend on sensing specific System configurations to determine whether they need to arm or take actions. An examples of an adverse interaction: A RAS that reconfigures the System also changes the available fault duty, which can affect distance relay overcurrent (“fault detector”) supervision and ground overcurrent protection coordination.

~~7.8.~~ Identification of other affected RCs.

This information is needed to aid in information exchange among all affected entities and coordination of the RAS with other RAS and protection and control systems.

III. Implementation

1. Documentation describing the applicable equipment used for detection, ~~telecommunications, transfer trip~~dc supply, communications, logic processing, ~~control actions~~, and monitoring.

Detection

Detection and initiating devices, whether for arming or triggering action, should be designed to be secure. Several types of devices have been commonly used as disturbance, condition, or status detectors:

- Line open status (event detectors),
- Protective relay inputs and outputs (event and parameter detectors),
- Transducer and IED (analog) inputs (parameter and response detectors),
- Rate of change (parameter and response detectors).

DC Supply

Batteries and charges, or other forms of dc supply for RAS, are commonly also used for Protection Systems. This is acceptable, and maintenance of such supplies is covered by PRC-005. However, redundant RAS systems, when used, should be supplied from separately protected (fused or breaker) circuits.

Communications: Telecommunications Channels and Transfer Trip Equipment

Telecommunications channels used for sending and receiving RAS information between sites and/or transfer trip devices should meet at least the same criteria as other relaying protection communication channels. -Discuss performance of any non-deterministic communication systems used (such as Ethernet).

The scheme logic should be designed so that loss of the channel, noise, or other channel or equipment failure will not result in a false operation of the scheme.

It is highly desirable that the channel equipment and communications media (power line carrier, microwave, optical fiber, etc.) be owned and maintained by the RAS-~~owner~~entity, or perhaps leased from another entity familiar with the necessary reliability requirements.- All channel equipment should be monitored and alarmed to the dispatch center so that timely diagnostic and repair action shall take place upon failure. -Publicly switched telephone networks are generally an undesirable option.

Communication channels should be well labeled or identified so that the personnel working on the channel can readily identify the proper circuit. -Channels between entities should be identified with a common name at all terminals.

Transfer trip equipment, when separate from other RAS equipment, should be monitored and labeled similarly to the channel equipment.

Logic Processing

All RAS require some form of logic processing to determine the action to take when the scheme is triggered. -Required actions are always scheme dependent. -Different actions may be required at different arming levels or for different ~~contingencies~~Contingencies. Scheme logic may be achievable by something as simple as wiring a few auxiliary relay contacts or by much more complex logic processing.

Platforms that have been used reliably and successfully include PLCs in various forms, personal computers (PCs), microprocessor protective relays, remote terminal units (RTUs), and logic processors. -Single-function relays have been used historically to implement RAS, but this approach is now less common except for very simple new RAS or minor additions to

existing RAS.

Control Actions

RAS action devices may include a variety of equipment such as transfer trip, protective relays, and other control devices. These devices receive commands from the logic processing function (perhaps through telecommunication facilities) and initiate RAS actions at the sites where action is required.

Monitoring by SCADA/EMS should include at least

- Whether the scheme is in-service or out of service.
 - For RAS that are armed manually, the arming status may be the same as whether the RAS is in-service or out of service.
 - For RAS that are armed automatically, these two states are independent because a RAS that has been placed in-service may be armed or unarmed based on whether the automatic arming criteria have been met.
 - The current operational state of the scheme (available or not).
 - In cases where the RAS requires single-component failure performance ~~(; e.g.,~~ redundancy), the minimal status indications should be provided separately for each system.
 - The minimum status is generally sufficient for operational purposes; however, where possible it may be is often useful to provide additional information regarding partial failures or the status of critical components to allow the RAS ~~owner~~ entity to more efficiently troubleshoot a reported failure. Whether this capability exists will depend in part on the design and vintage of equipment used in the RAS. While all schemes should provide the minimum level of monitoring, new schemes should be designed with the objective of providing monitoring at least similar to what is provided for microprocessor-based Protection Systems.
2. Information on detection logic and settings/parameters that control the operation of the RAS. [Reference NERC Reliability Standards PRC-012, R1.2 and PRC-013, R1.3]
- Several methods to determine line or other equipment status are in common use, often in combination:
- a. Auxiliary switch contacts from circuit breakers and disconnect switches (52a/b, 89a/b)—the most common status monitor; “a” contacts exactly emulate actual breaker status, while “b” contacts are opposite to the status of the breaker;
 - b. Undercurrent detection—a low level indicates an open condition, including at the far end of a line; pickup is typically slightly above the total line-charging current;
 - c. Breaker trip coil current monitoring—typically used when high-speed RAS response is required, but usually in combination with auxiliary switch contacts and/or other detection because the trip coil current ceases when the breaker opens; and

- d. Other detectors such as angle, voltage, power, frequency, rate of change of ~~these~~the ~~af~~o~~re~~m~~e~~n~~ti~~o~~n~~e~~d, out of step, etc. ~~are~~ very are dependent on specific scheme requirements, but some forms may substitute for or enhance ~~current~~other monitoring ~~detection~~described in items 'a', 'b', and 'c' above.~~

Both RAS arming and action triggers often require monitoring of analog quantities such as power, current, and voltage at one or more locations and are set to detect a specific level of the pertinent quantity. ~~These~~ monitors may be relays, meters, transducers, or other devices

3. Documentation showing that any multifunction device used to perform RAS function(s), in addition to other functions such as protective relaying or SCADA, does not compromise the reliability of the RAS when the device is not in ~~service~~ or is being maintained.

In this context, a multifunction device (e.g., microprocessor-based relay) is a single component that is used to perform the function of a RAS in addition to protective relaying and/or SCADA simultaneously. It is important that other applications in the multifunction device do not compromise the functionality of the RAS when the device is in service or when it is being maintained. The following list outlines considerations when the RAS function is applied in the same microprocessor-based relay as equipment protection functions:

- a. Describe how the multifunction device is applied in the RAS.
- b. Show the general arrangement and describe how the multi-function device is labeled in the design and application, so as to identify the RAS and other device functions.
- c. Describe the procedures used to isolate the RAS function from other functions in the device.
- d. Describe the procedures used when each multifunction device is removed from service and whether coordination with other protection schemes is required.
- e. Describe how each multifunction device is tested, both for commissioning and during periodic maintenance testing, with regard to each function of the device.
- f. Describe how overall periodic RAS functional and throughput tests are performed if multifunction devices are used for both local protection and RAS.
- g. Describe how upgrades to the multifunction device, such as firmware upgrades, are accomplished. How is the RAS function taken into consideration?

Other devices that are usually not considered multifunction devices such as auxiliary relays, control switches, and instrument transformers may serve multiple purposes such as protection and RAS. Similar concerns apply for these applications as noted above.

4. Documentation ~~showing that~~ describing the System performance resulting from a single-component failure in a the RAS, except for limited impact RAS, when the RAS is intended to operate, does. A single component failure in a RAS not determined to be limited impact must not prevent the BES from meeting the same performance requirements (defined in Reliability Standard TPL-001-4 or its successor) as those required for the events and conditions for which the RAS is designed. The documentation should describe or illustrate how the ~~implementation~~ design achieves this objective. [Reference NERC Reliability Standard PRC-012, R1.3]

RAS automatic arming, if applicable, is vital to RAS and System performance and is therefore included in this requirement. Acceptable methods to achieve this objective include, but are not limited to the following:

~~Acceptable methods to achieve this objective include the following:~~

- a. Providing redundancy of RAS components. Typical examples are listed below:
- i. Protective or auxiliary relays used by the RAS.
 - ii. Communications systems necessary for correct operation of the RAS.
 - iii. Sensing devices used to measure electrical or other quantities used by the RAS.
 - iv. Station dc supply associated with RAS functions.
 - v. Control circuitry associated with RAS functions through the trip coil(s) of the circuit breakers or other interrupting devices.
 - ~~vi. Computers or programmable logic devices used to analyze information and provide RAS operational output.~~
 - vi. Logic processing devices that accept System inputs from RAS components or other sources, make decisions based on those inputs, or initiate output signals to take remedial actions.
- b. Arming more load or generation than necessary such that failure of the RAS to drop a portion of load or generation ~~would not be an issue, if~~ due to that single component failure will still result in satisfactory System performance, as long as tripping the total armed amount of load or generation does not cause other adverse impacts to reliability.
- c. Using alternative automatic actions to back up failures of single RAS components.
- d. Manual backup operations, using planned System adjustments such as Transmission configuration changes and re-dispatch of generation, if such adjustments are executable within the time duration applicable to the Facility Ratings.
5. Documentation describing the functional testing process.

IV. RAS Retirement

The following checklist identifies important RAS information for each existing RAS to be retired that the RAS-entity shall document and provide to the Reliability Coordinator for review pursuant to Requirement R1.

1. Information necessary to ensure that the Reliability Coordinator is able to understand the physical and electrical location of the RAS and related facilities.
2. A summary of technical studies, if applicable, upon which the decision to retire the RAS is based.
3. Anticipated date of RAS retirement.

While the documentation necessary to evaluate RAS removals is not as extensive as for new or functionally modified RAS, it is still vital that, when the RAS is no longer available, System performance will still meet the appropriate (usually TPL) requirements for the Contingencies or System conditions that the RAS had been installed to remediate.

Technical Justification for Attachment 2 Content

Reliability Coordinator RAS Review Checklist

Attachment 2 is a checklist provided to facilitate consistent reviews continent-wide for new or functionally modified RAS prior to the RAS installation. The checklist is meant to assist the RC in identifying reliability-related considerations ~~generally~~-relevant to various aspects of RAS design and implementation, ~~and also for the purpose of facilitating consistent reviews continent wide for each RAS to be installed or functionally modified. Most of the checklist items should be applicable to most RAS. There may be checklist items that are not applicable to a given RAS in which case they may be noted as not applicable and skipped in the RC review. Depending on the specifics of the RAS under review, it is possible that other reliability considerations may be identified during the review. Any other reliability considerations, along with their resolution with respect to the particular RAS under review, should be documented along with the Attachment 2 items that were applicable to the specific RAS under review.~~

Technical Justifications for Attachment 3 Content

Database Information

Attachment 3 contains the minimum information that the RC must consolidate into its database for each RAS in its area.

1. RAS name.
 - The name used to identify the RAS.
2. Each RAS-entity and contact information.
 - A reliable phone number or email address should be included to contact ~~the~~each RAS-entity if more information is needed. ~~At a minimum, the name of the RAS entity responsible for the RAS information should be provided.~~
3. Expected or actual in-service date; most recent (Requirement R3) RC-approval date; most recent ~~60-~~full-~~calendar-~~month (Requirement R4) evaluation date; and, date of retirement, if applicable.
 - Specify each applicable date.
4. System performance issue or reason for installing the RAS (e.g., thermal overload, angular instability, poor oscillation damping, voltage instability, under-/over-voltage, slow voltage recovery).
 - A short description of the reason for installing the RAS is sufficient, as long as the main System issues addressed by the RAS can be identified by someone with a reliability need.
5. Description of the ~~contingencies~~Contingencies or System conditions for which the RAS was designed (initiating conditions).
 - A high level summary of the conditions/~~contingencies~~Contingencies is expected. Not all combinations of conditions are required to be listed.
6. Corrective action taken by the RAS.
 - A short description of the actions should be given. For schemes shedding load or generation, the maximum amount of megawatts should be included.
7. Identification of limited impact⁹ RAS.
 - Specify whether or not the RAS is designated as limited impact.
- ~~7-8.~~ Any additional explanation relevant to high-level understanding of the RAS.

⁹ A RAS designated as “limited impact” cannot, by inadvertent operation or failure to operate, cause or contribute to BES Cascading, uncontrolled separation, angular instability, voltage instability, voltage collapse, or unacceptably damped oscillations. A RAS implemented prior to the effective date of this standard that has been through the regional review process and designated as Type 3 in NPCC, Type 2 in ERCOT, or LAPS in WECC will be recognized as limited impact.

Supplemental Material

- If deemed necessary, any additional information can be included in this section, but is not mandatory.

-