

Balance Resources and Demand Proof-of-Concept Field Trial

Update

January 24, 2006

Doug Hils

Balance Resources and Demand Standard Drafting Team

Balance Resources and Demand Proof-of-Concept Field Trial

The Balancing Authority ACE Limit (BAAL) shall not be exceeded for more than 30 consecutive clock-minutes

JULY-DEC 2005 Performance under BAAL

	Max MinCtLow	Max MinCtHigh	MinCtLow = Count of consecutive clock-minutes BAAL_Low was exceeded
BA1	8	4	
BA2	11	11	
BA3	12	5	
BA4	12	12	
BA5	16	17	
BA6	18	15	MinCtHigh = Count of consecutive clock-minutes BAAL_High was exceeded
BA7	20	20	
BA8	20	20	
BA9	20	23	
BA10	24	26	
BA11	25	24	
BA12	25	23	
BA13	26	23	

Full compliance since start of the Field Trial

Balance Resources and Demand Proof-of-Concept Field Trial

JULY 2005

FTL_Low max duration 5 = minutes	Consecutive Minutes Below FTL_Low					
	5	10	15	20	25	30
Number of Occurrences Below FTL_Low	2	0	0	0	0	0
FTL_High max duration = 3 minutes	Consecutive Minutes Above FTL_High					
	5	10	15	20	25	30
Number of Occurrences Above FTL_High	0	0	0	0	0	0

AUGUST 2005

FTL_Low max duration = 10 minutes	Consecutive Minutes Below FTL_Low					
	5	10	15	20	25	30
Number of Occurrences Below FTL_Low	8	1	0	0	0	0
FTL_High max duration = 5 minutes	Consecutive Minutes Above FTL_High					
	5	10	15	20	25	30
Number of Occurrences Above FTL_High	1	0	0	0	0	0

SEPTEMBER 2005

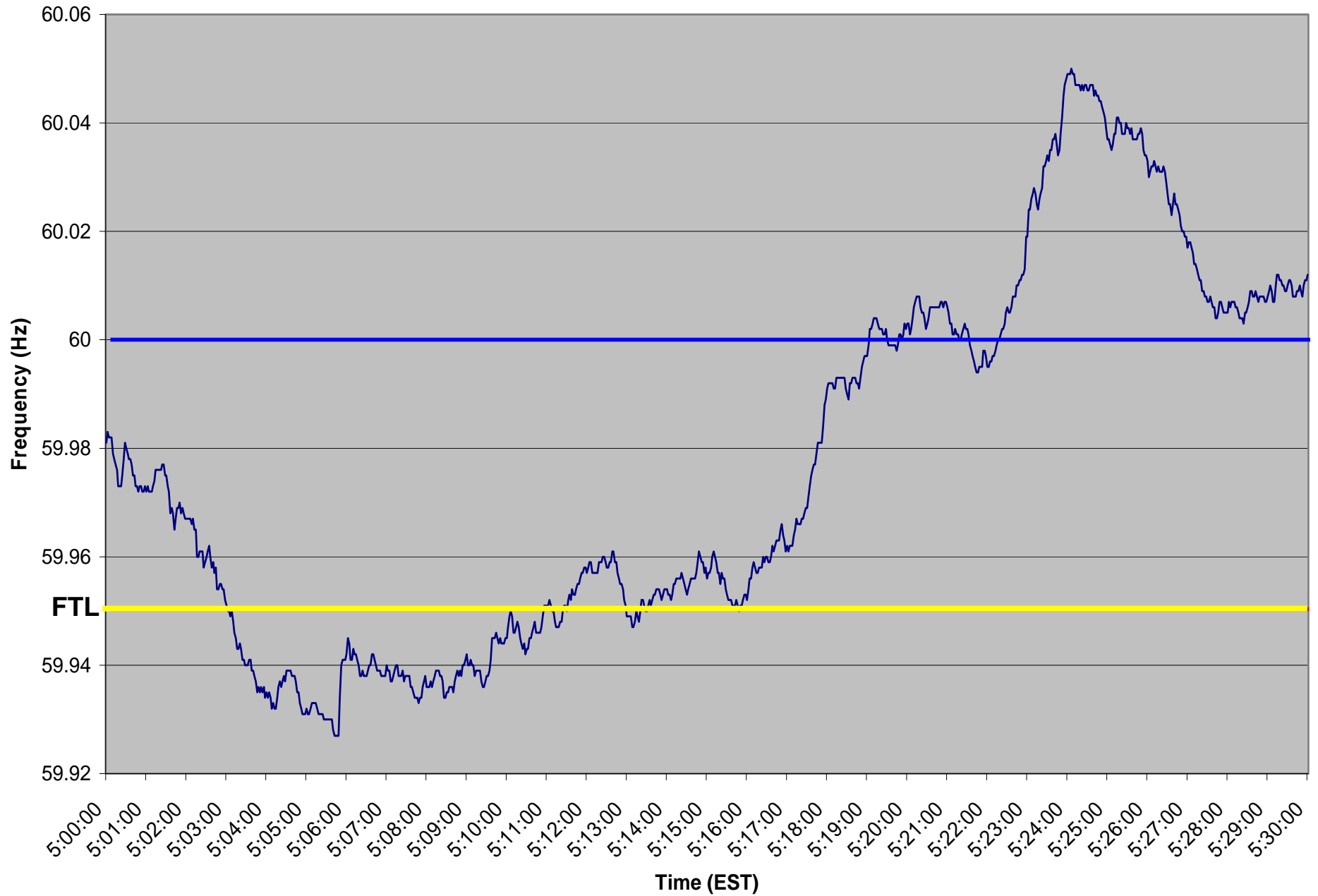
FTL_Low max duration = 8 minutes	Consecutive Minutes Below FTL_Low					
	5	10	15	20	25	30
Number of Occurrences Below FTL_Low	2	0	0	0	0	0
FTL_High max duration = 7 minutes	Consecutive Minutes Above FTL_High					
	5	10	15	20	25	30
Number of Occurrences Above FTL_High	2	0	0	0	0	0

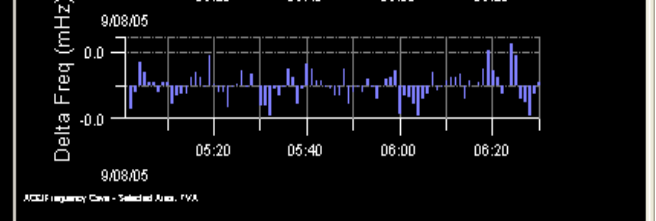
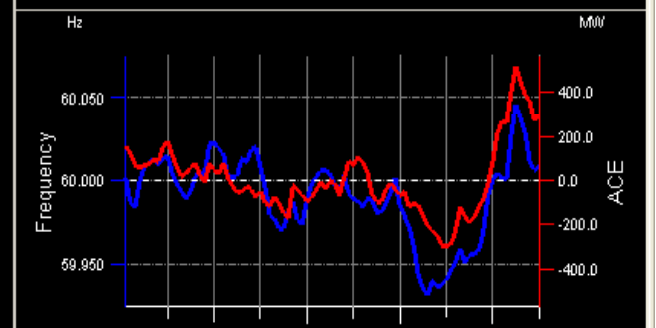
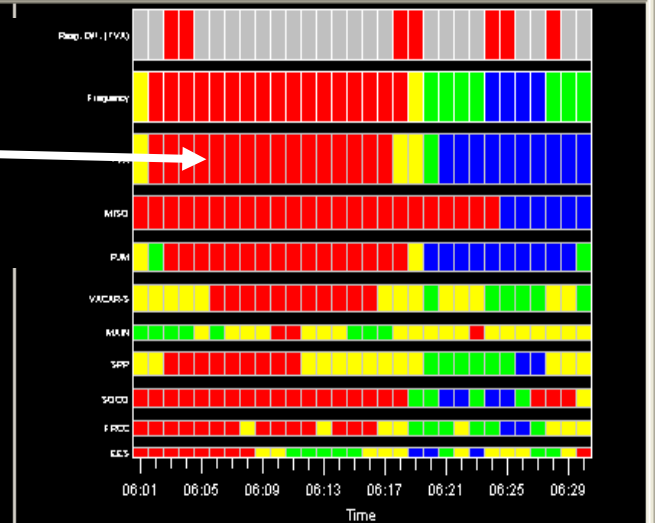
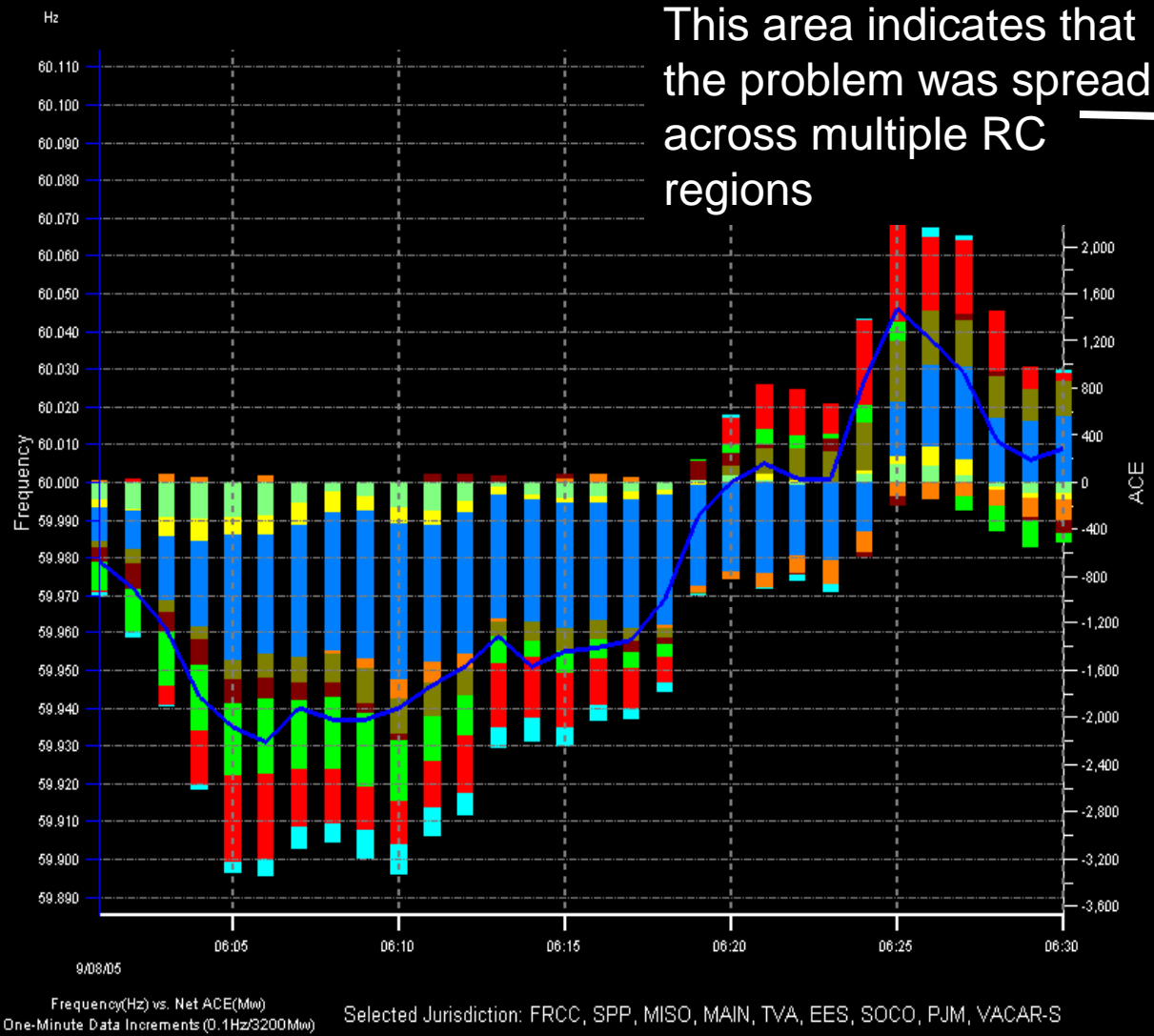
Balance Resources and Demand Proof-of-Concept Field Trial

Events of the Longest Duration Below
FTL_Low for Each Month
September – December 2005

9/08/2005 5:03 EST 8 minutes

Frequency 9/8/05





Date/Time: 09/08/2005 6:30 AM

Auto Refresh

Jurisdiction ACE-Frequency 1/2
Hour 1-Min ACE/Freq Bar-Chart
Interc. Missing ACE MW
E: 10 Q: -134 W: 37

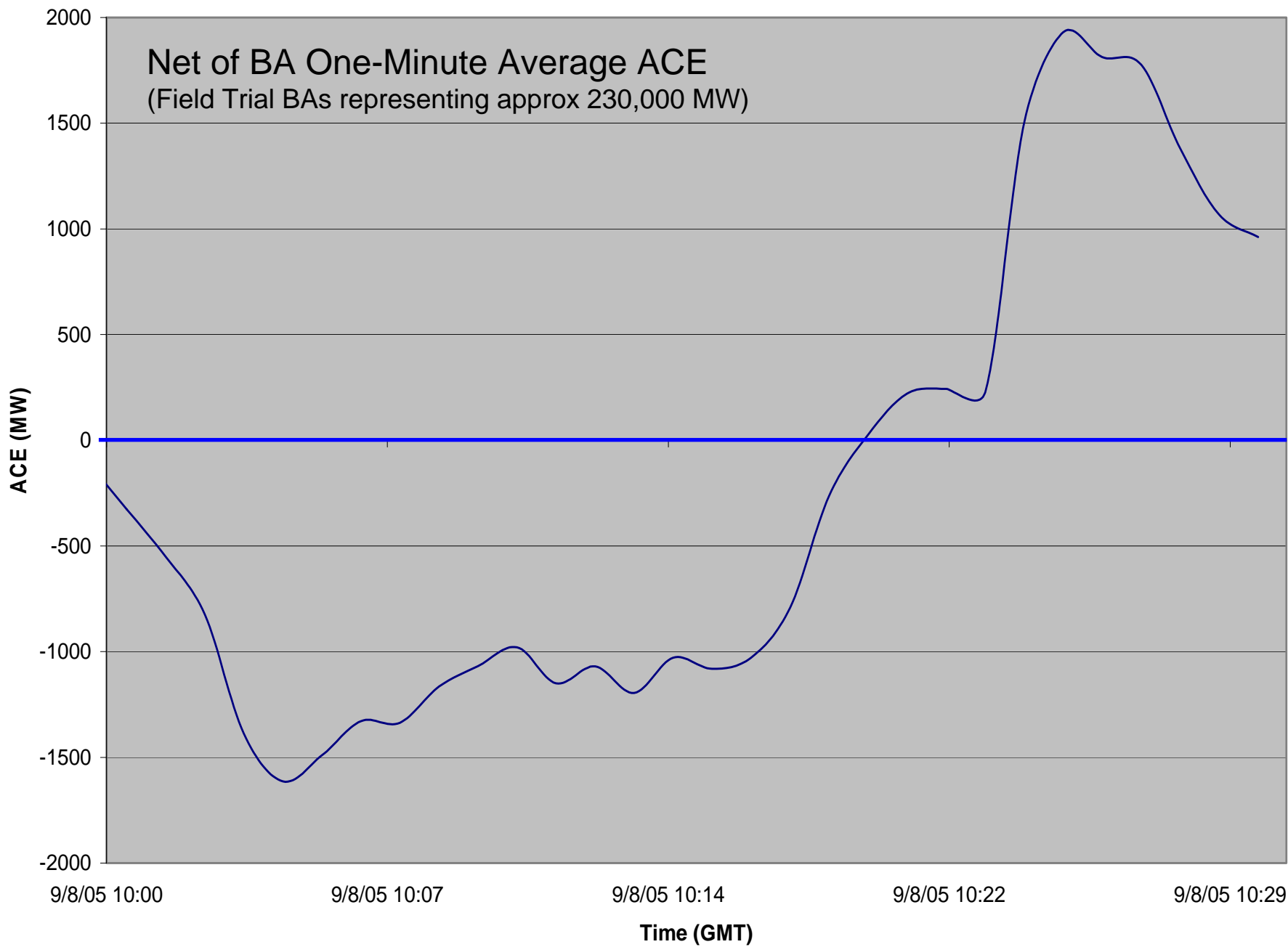
Overview | Worst/Best Rel Coordinators | Interconnection Frequency_ACE Quality | Rel Coordinator(Inner Circles) | ACE/Freq Bar Chart | Reliability Coordinator Area Image

Interconnection	Date_Time	Frequency	Freq_Delta	Expected_ACE	Actual_Net_ACE	Missing_ACE	Missing_ACE_Perc
E	09/08/2005 06:30	60.009	0.003	604.3	594.1	10.2	2
Q	09/08/2005 06:30	59.982	-0.018	-106.6	27.4	-134.1	126
W	09/08/2005 06:30	59.994	0	-120.2	-157	36.9	-31

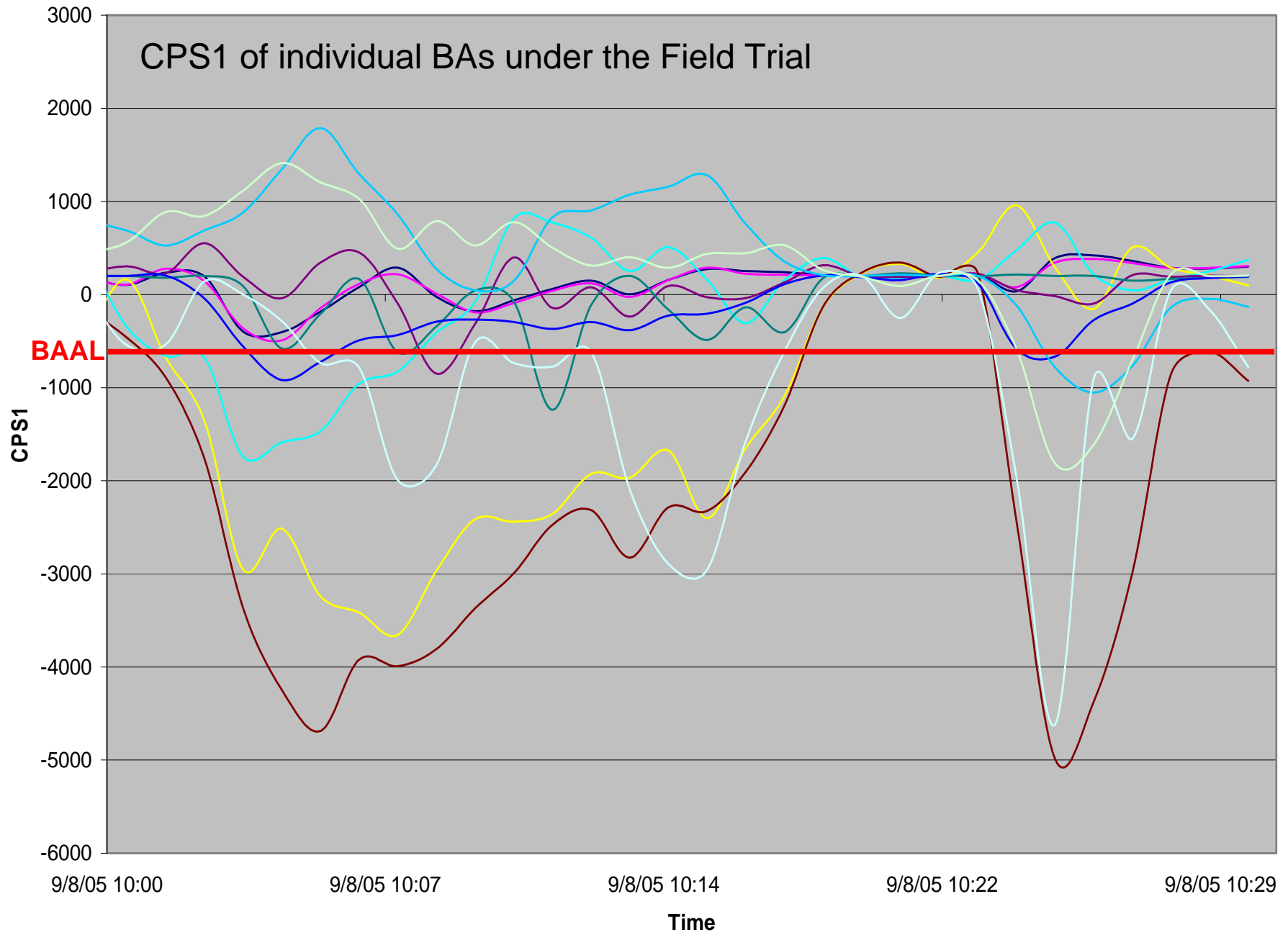
View Angle: 55.

ACE-FREQ MONITORING
© Electric Power Group, LLC 2005

Field Trial ACE

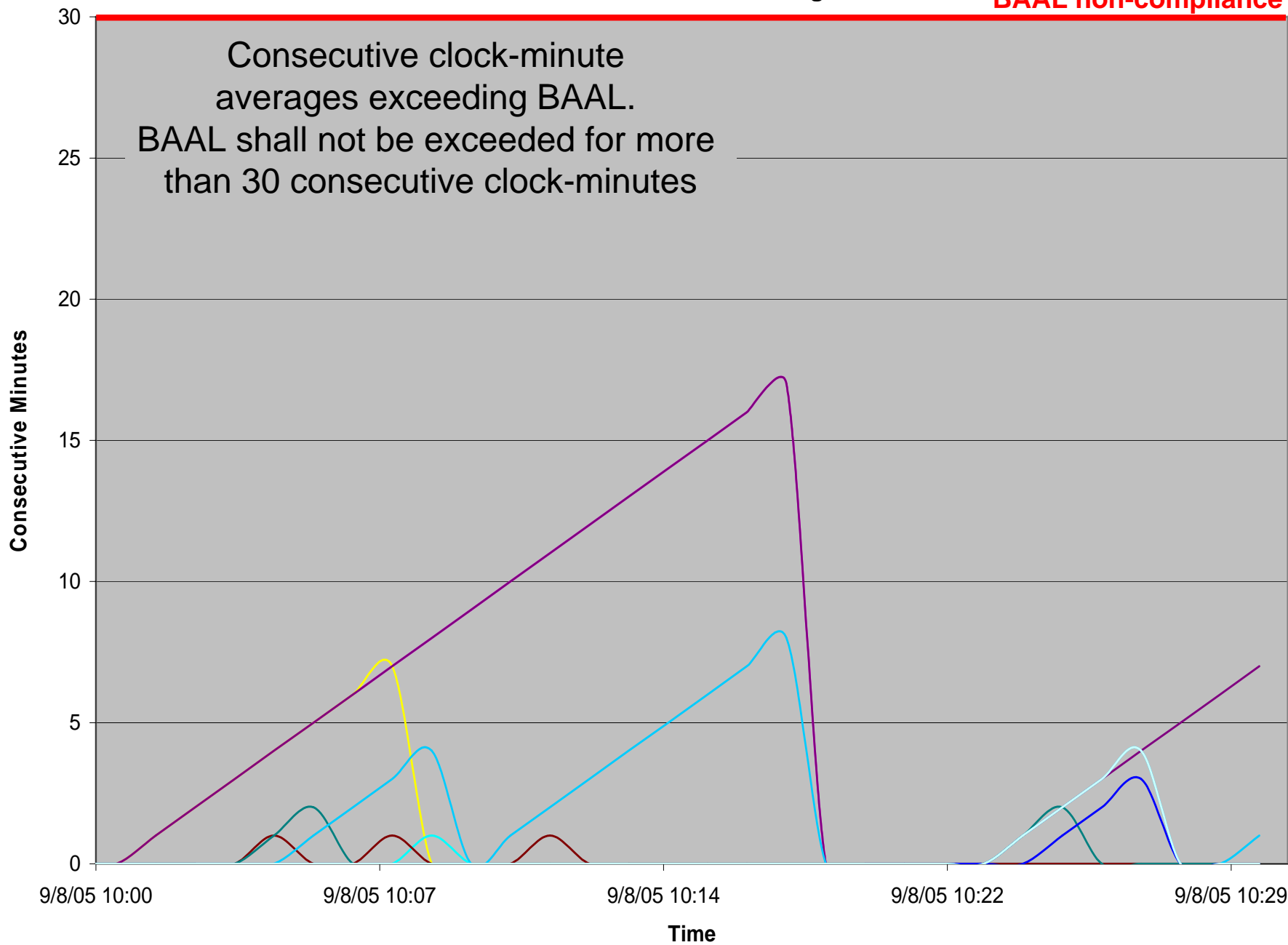


CPS1 %



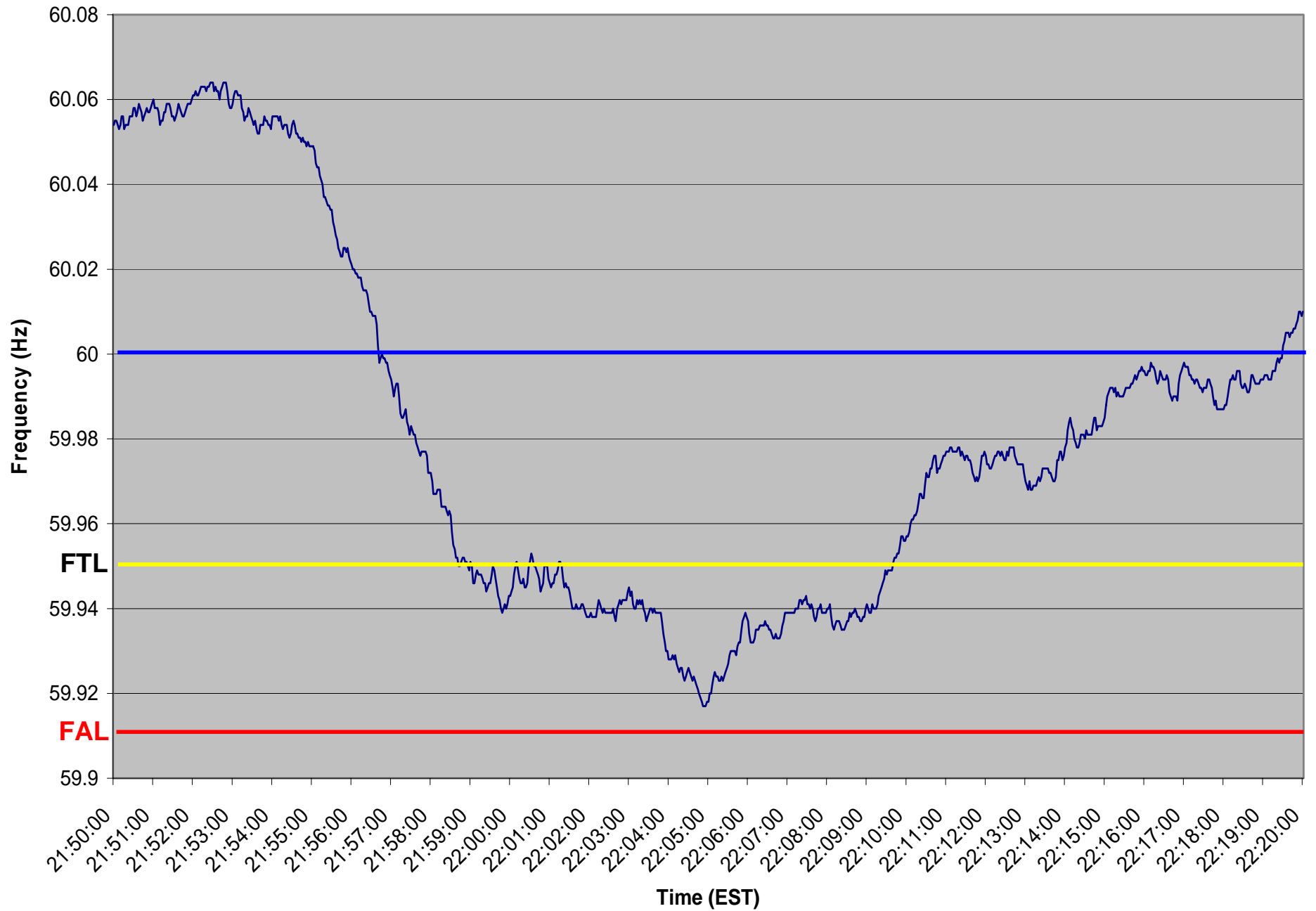
Consecutive Minutes Exceeding BAAL

BAAL non-compliance

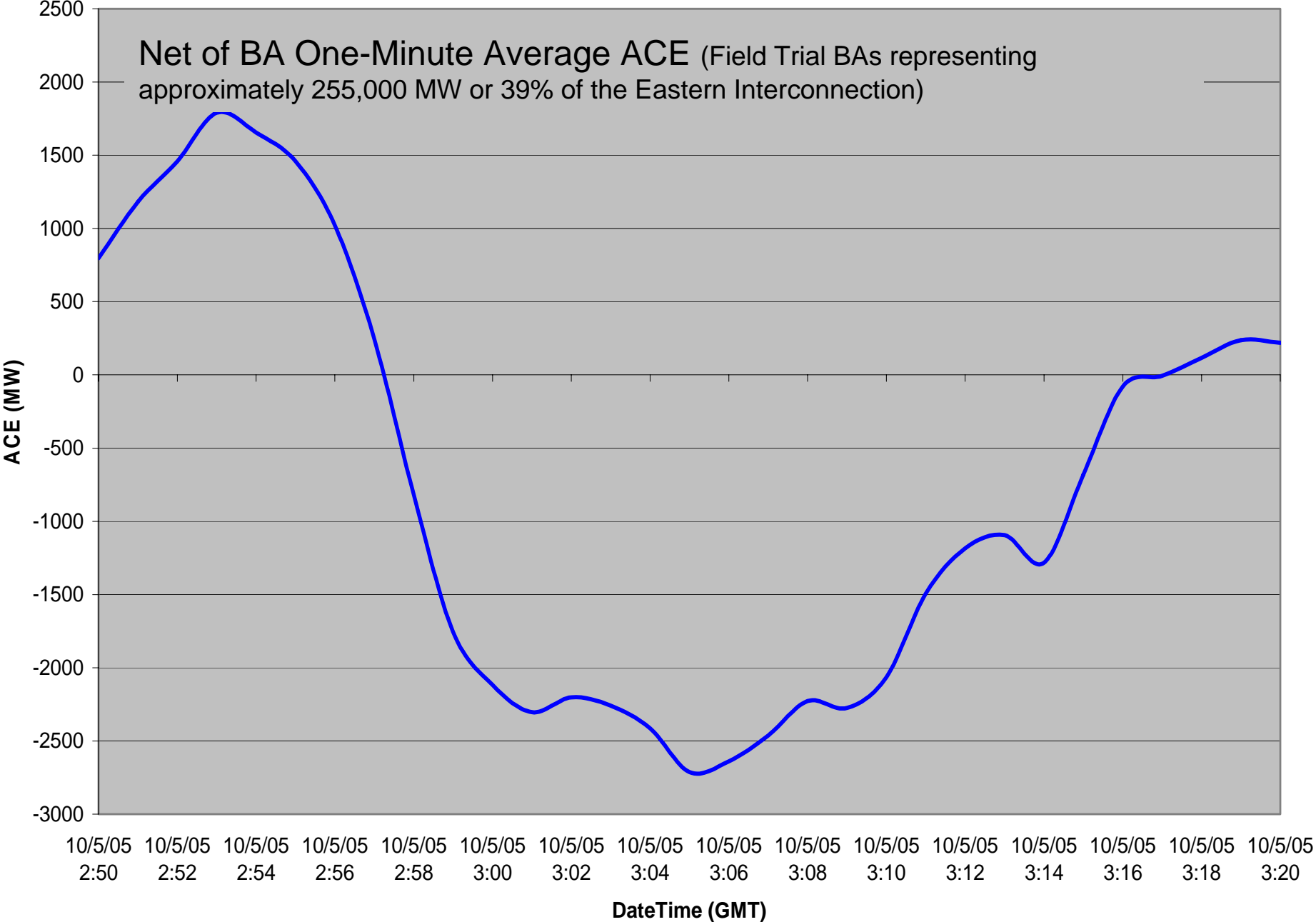


10/04/2005 21:59 EST 11 minutes

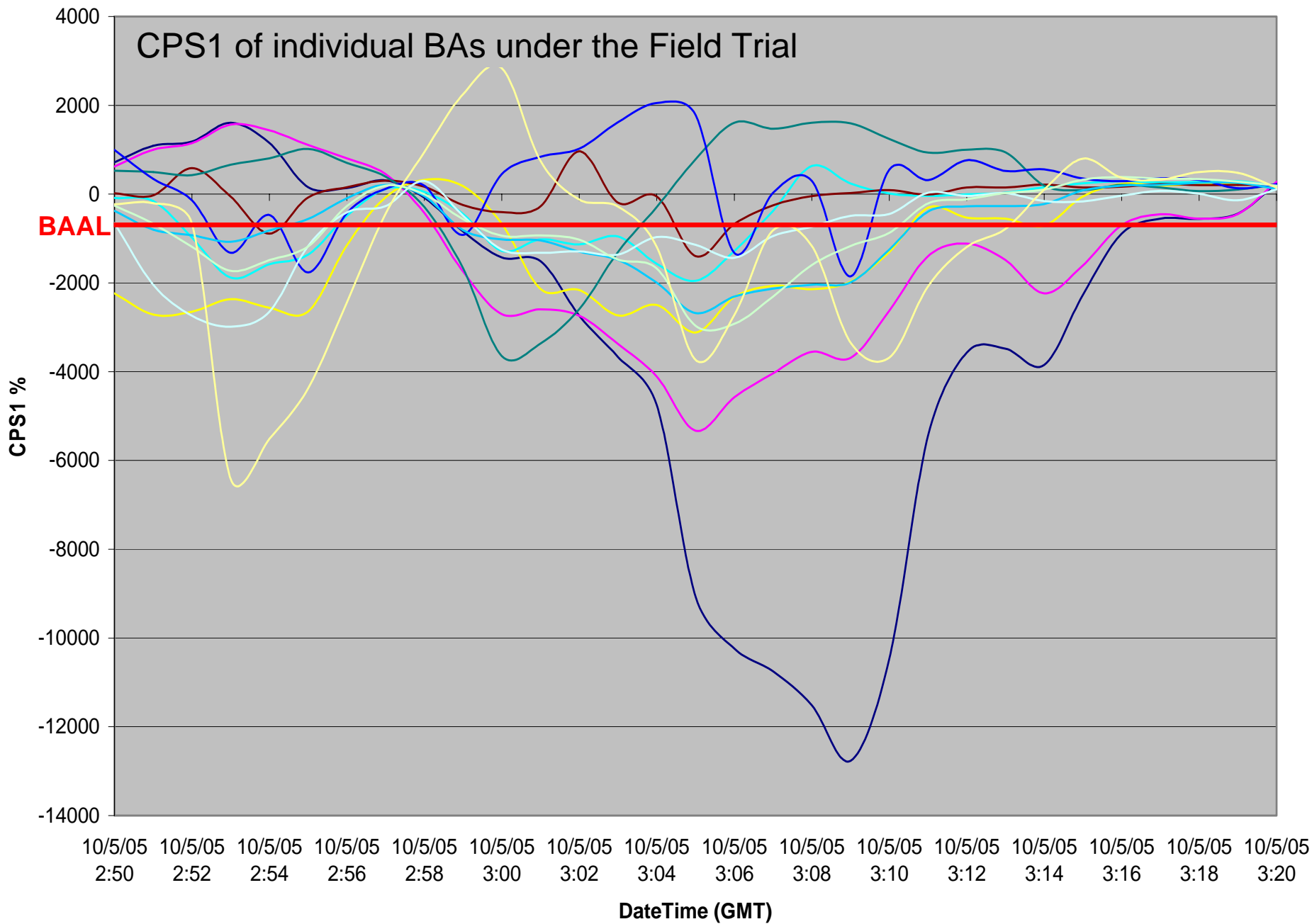
Frequency 10/04/05



Net ACE of Field Trial Balancing Authorities

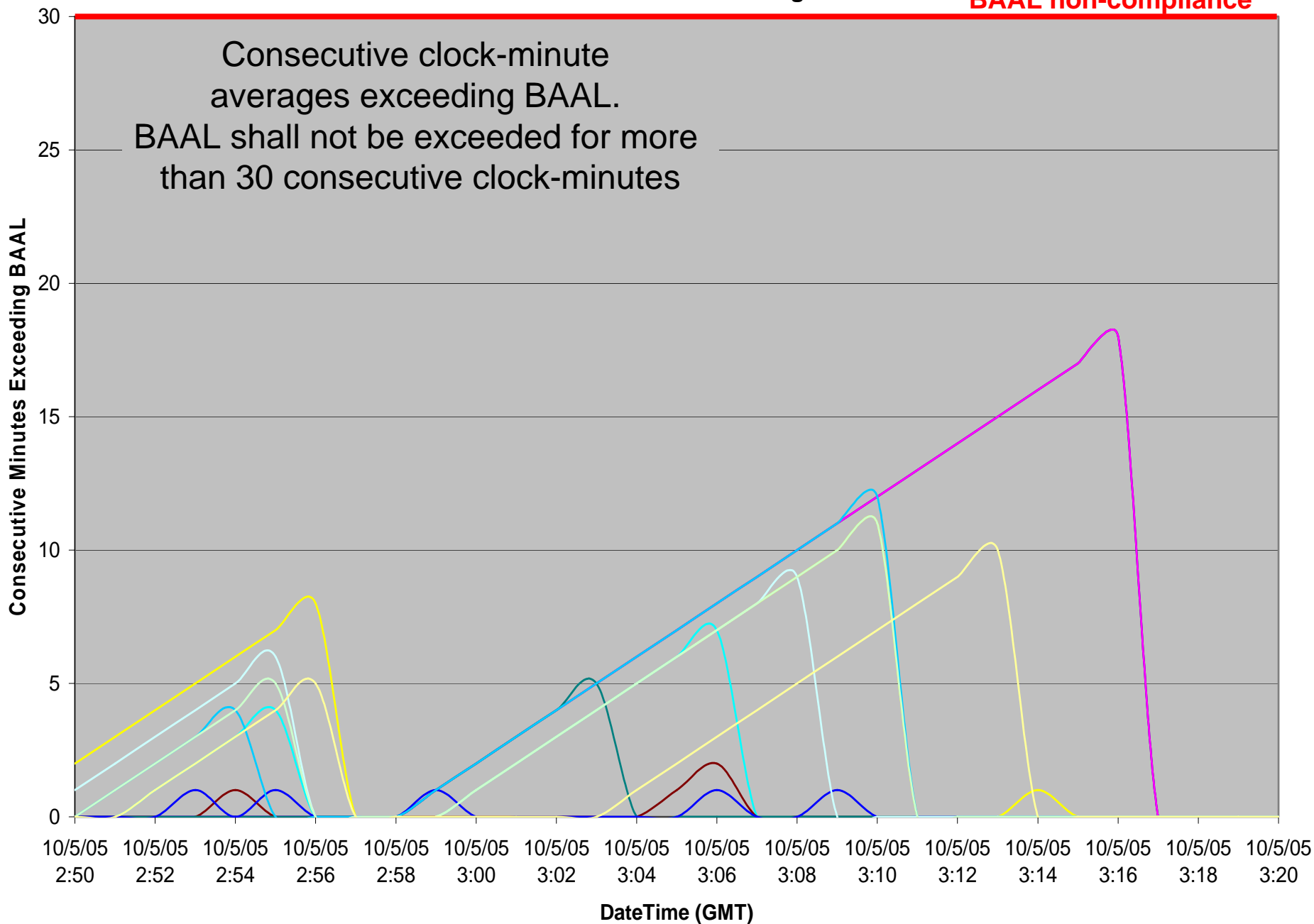


CPS1



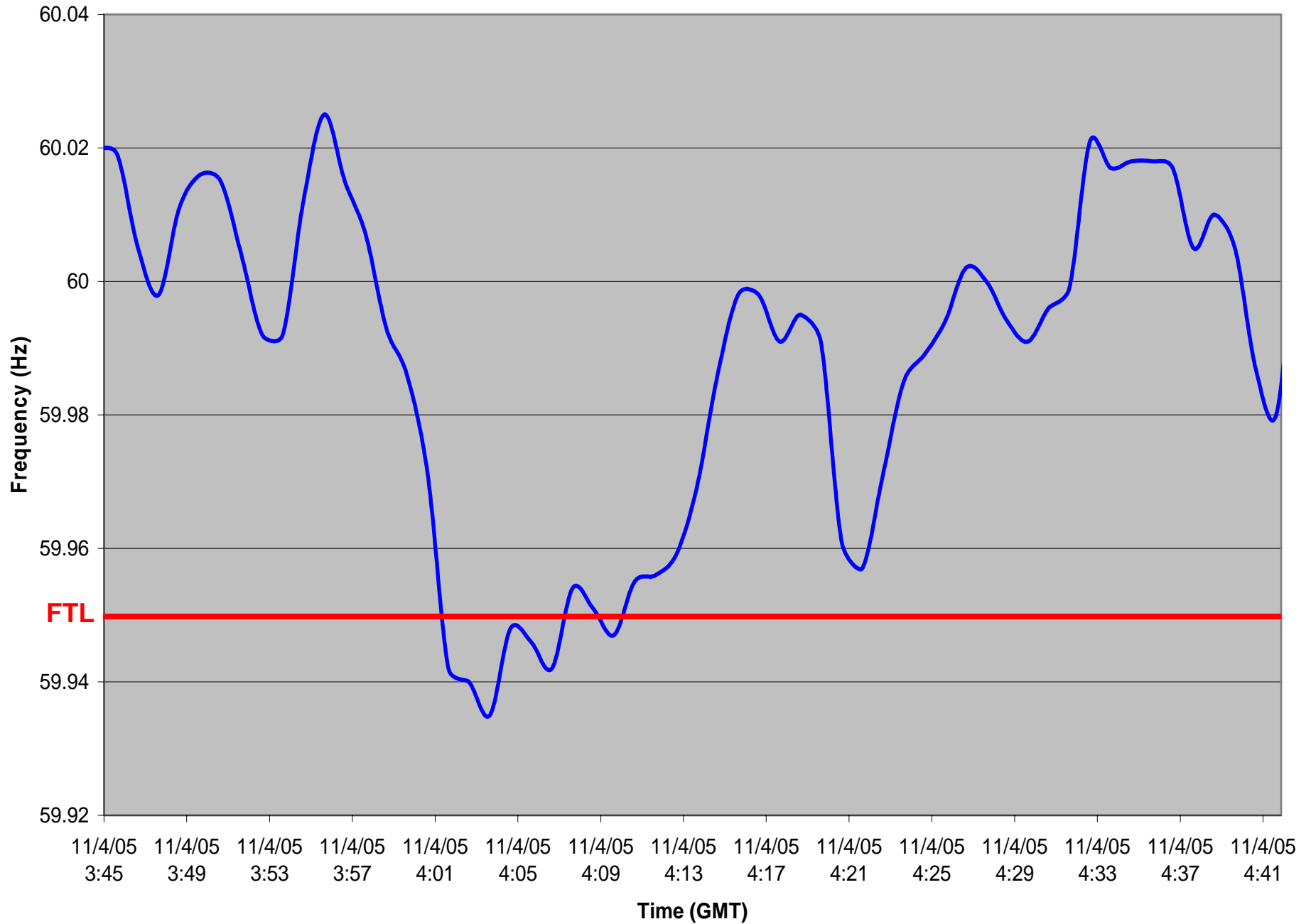
Consecutive Minutes Exceeding BAAL

BAAL non-compliance

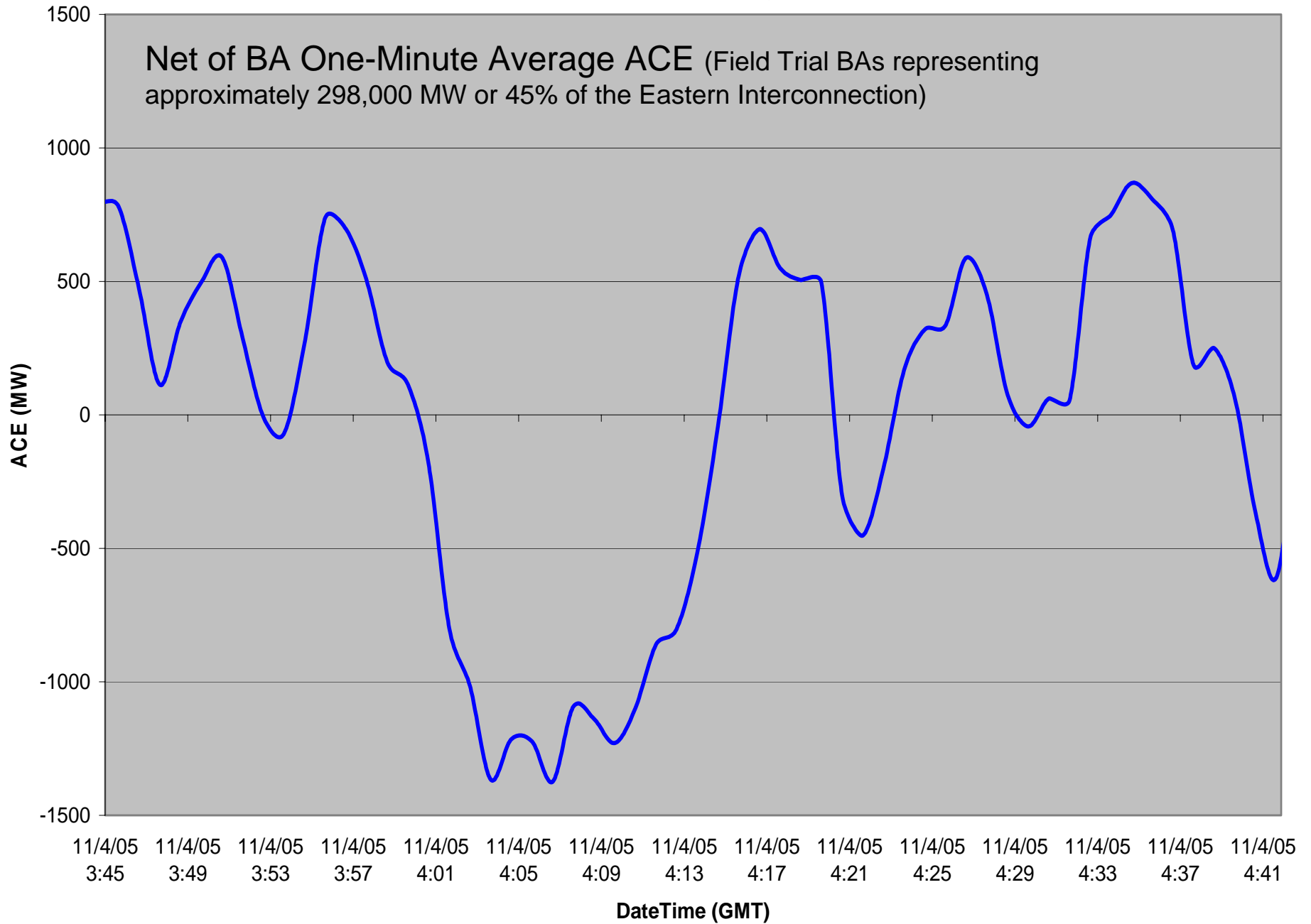


11/03/2005 23:01 EST 6 minutes

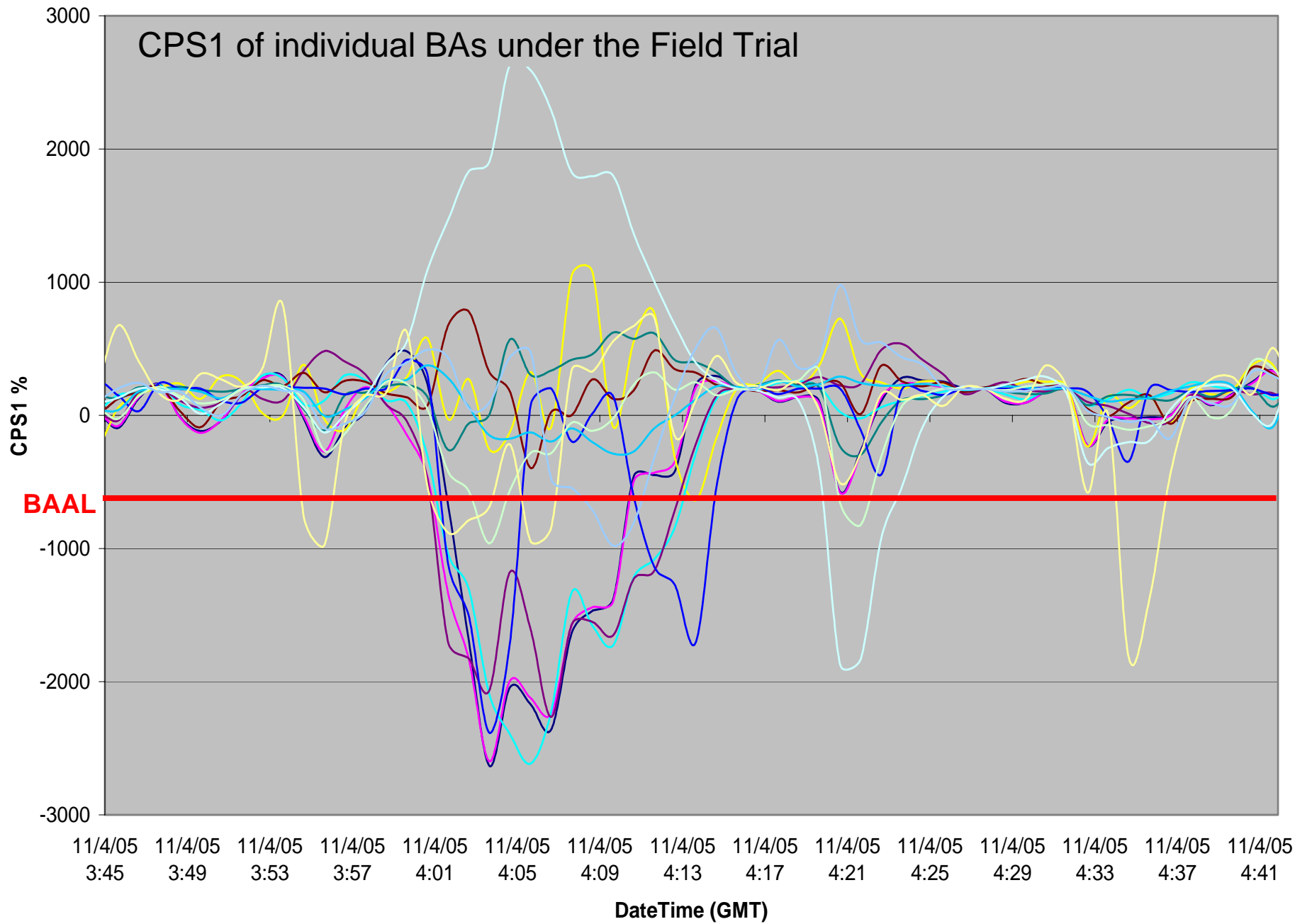
Frequency



Net ACE of Field Trial Balancing Authorities

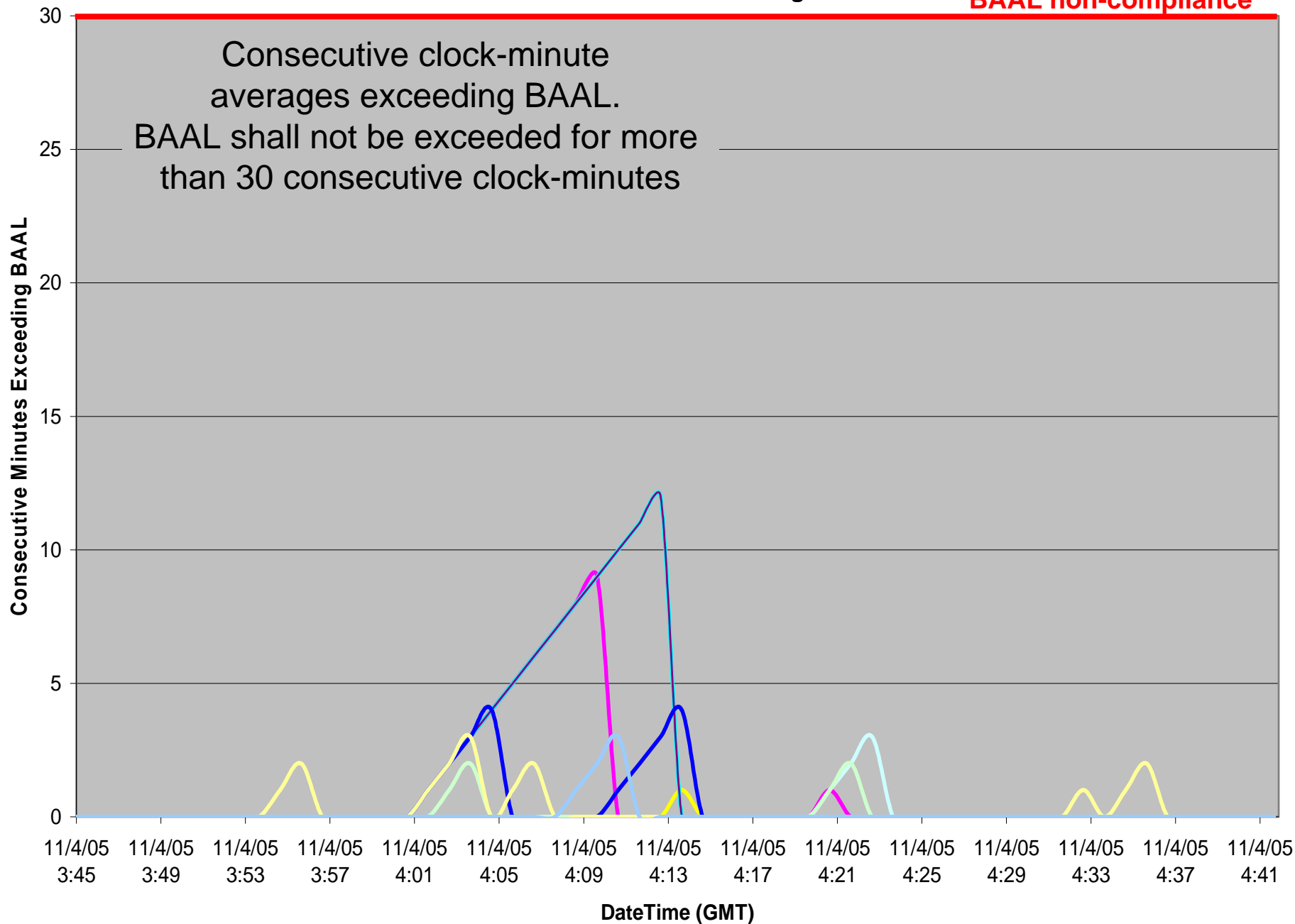


CPS1



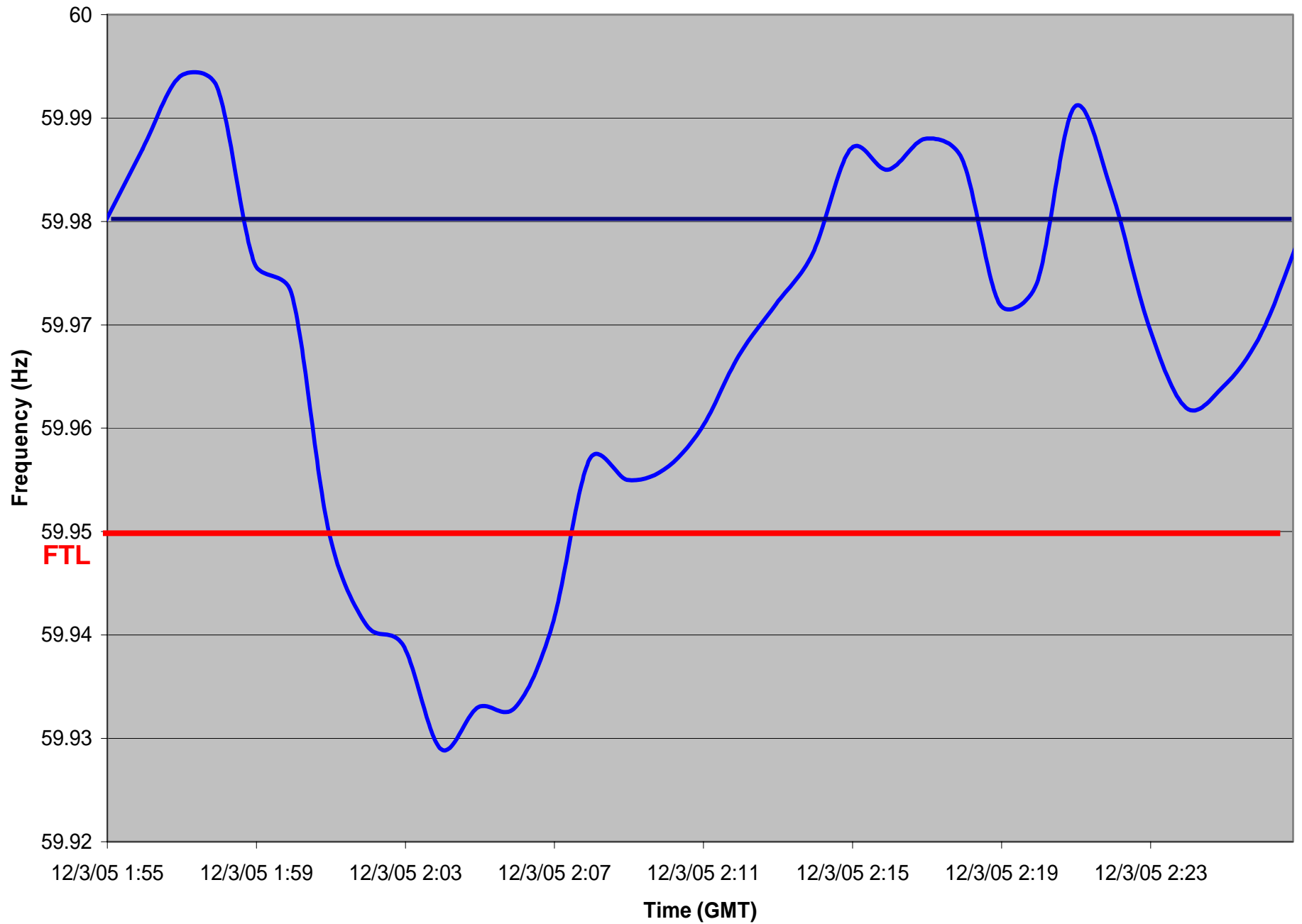
Consecutive Minutes Exceeding BAAL

BAAL non-compliance

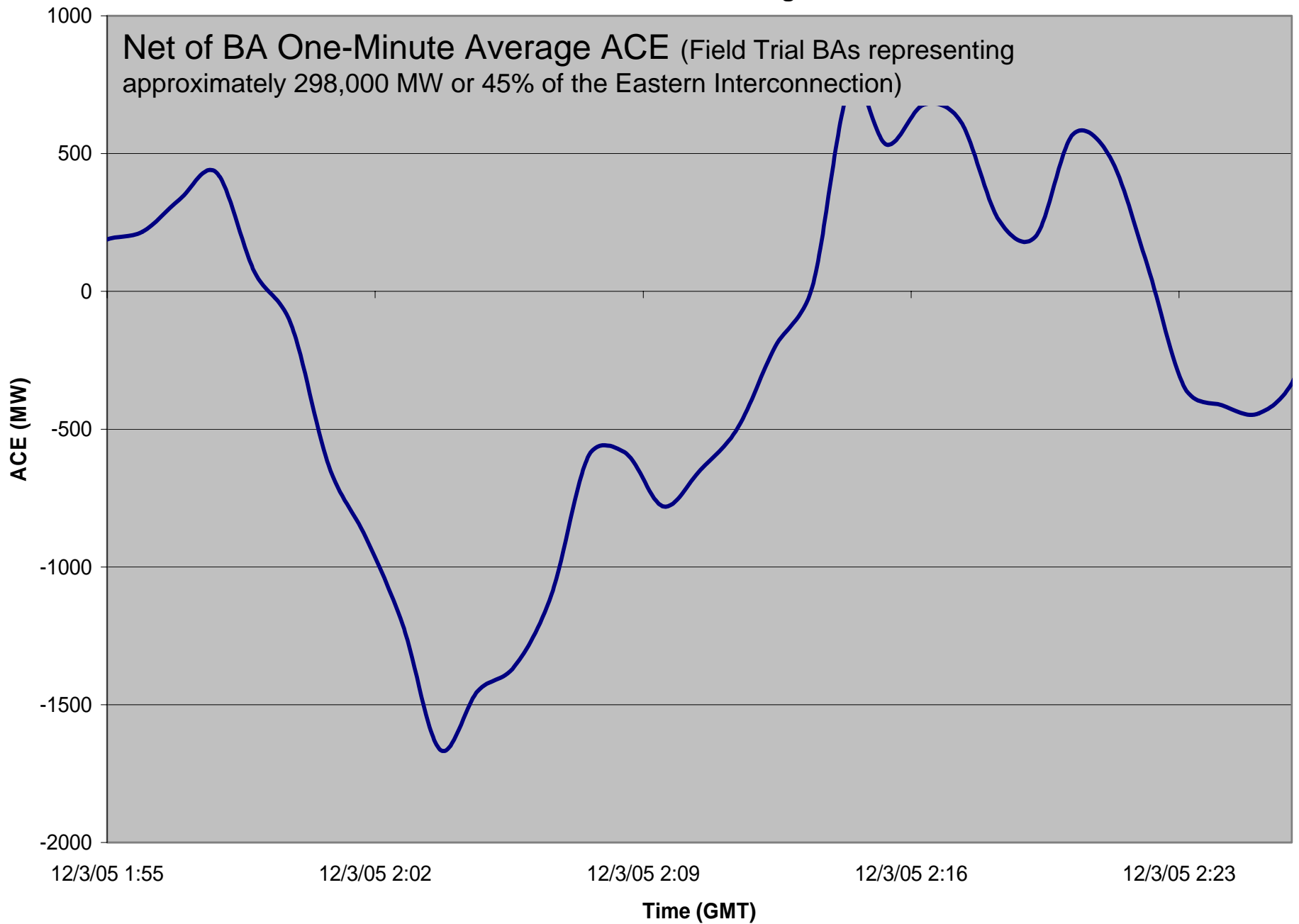


12/02/2005 21:00 EST 7 minutes

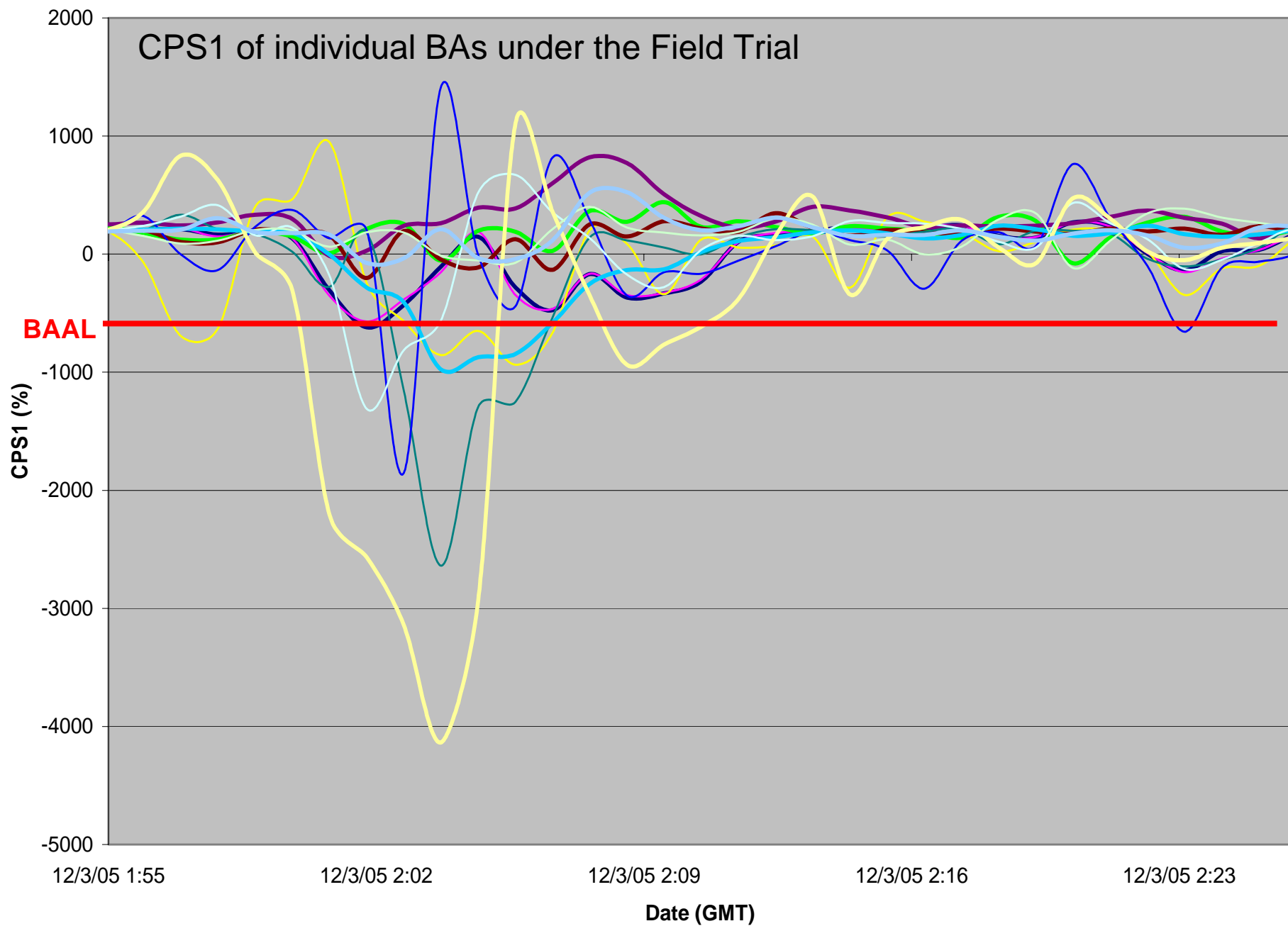
Frequency



Net ACE of Field Trial Balancing Authorities

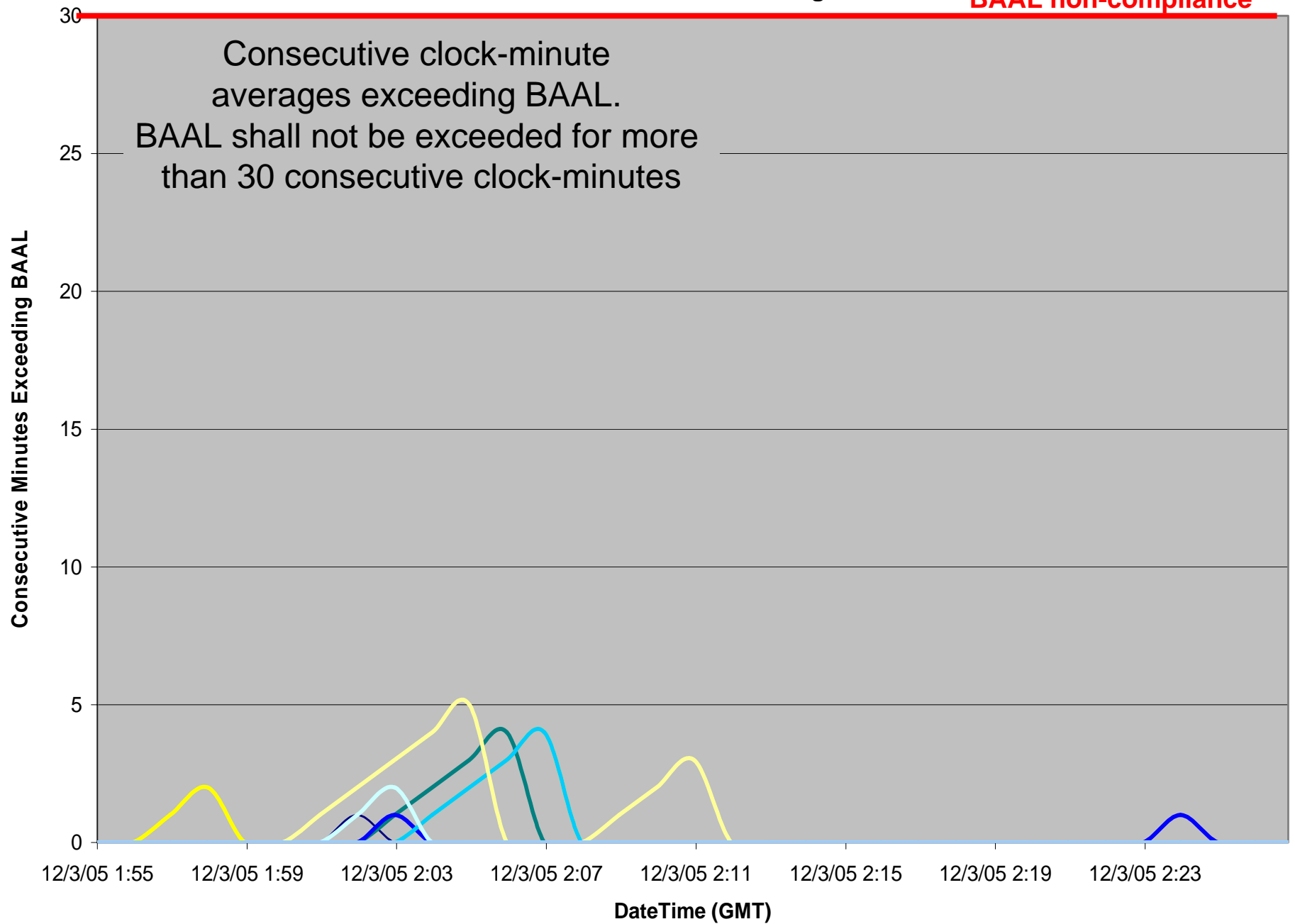


CPS1



Consecutive Minutes Exceeding BAAL

BAAL non-compliance



Balance Resources and Demand Proof-of-Concept Field Trial

Questions?

Doug Hils

Balance Resources and Demand Standard Drafting Team