

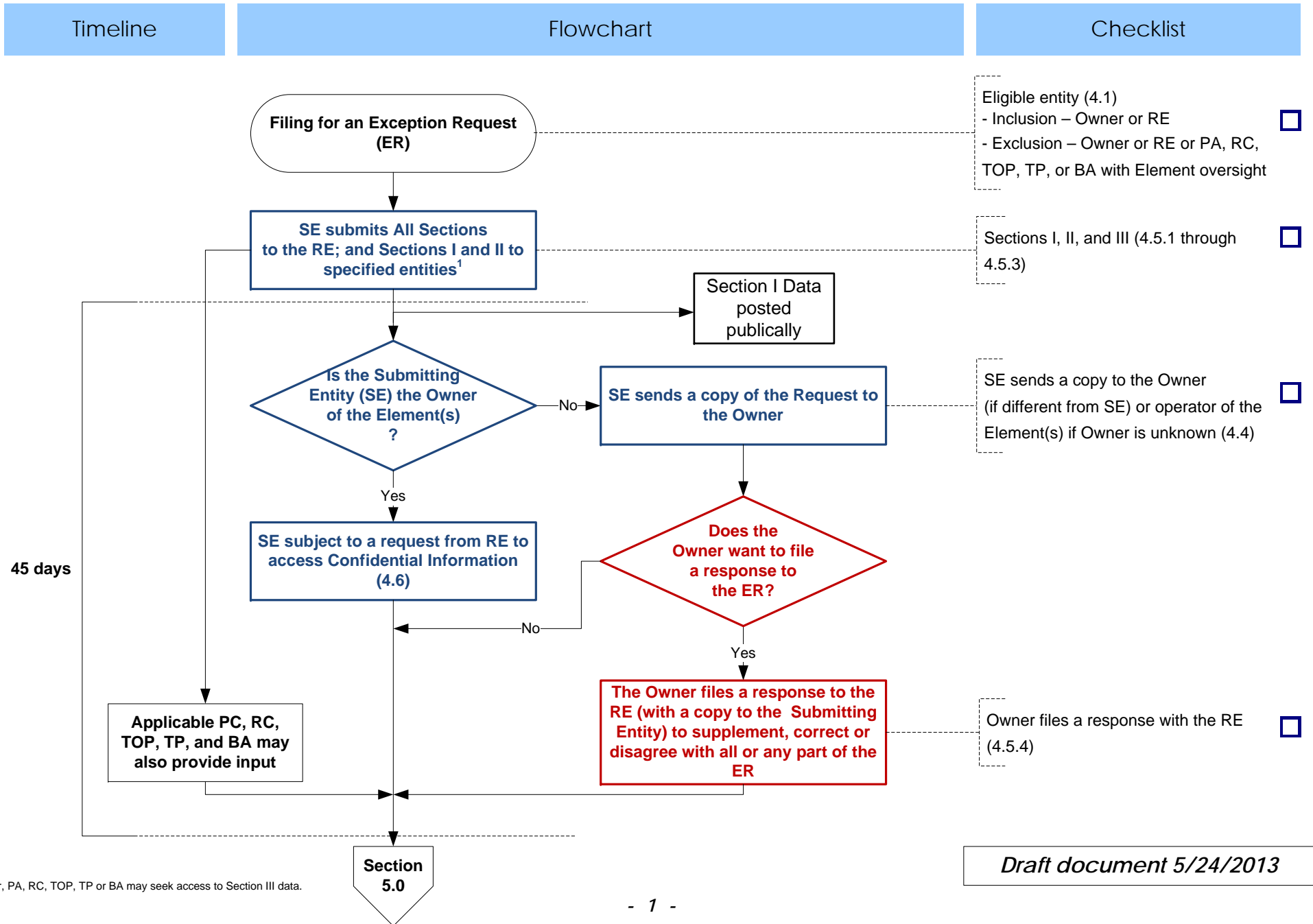
North American Electric Reliability Corp.  
Bulk Electric System Exception Process Flow Diagrams  
May , 2013

Note: Every effort has been made to ensure that the content of these flow diagrams match the Bulk Electric System Exception Process as described in the NERC Rules of Procedure. However, in the case of discrepancies between the NERC Rules of Procedure and these flow diagrams, the NERC Rules of Procedure govern.

# BES Element Exception Process

## Section 4.0 - Form, content and submission on an exception request

(from the Submitting Entity's perspective)



<sup>1</sup> Owner, PA, RC, TOP, TP or BA may seek access to Section III data.

# BES Element Exception Process

## Section 5.0 – Review, acceptance or rejection, and recommendation regarding ER

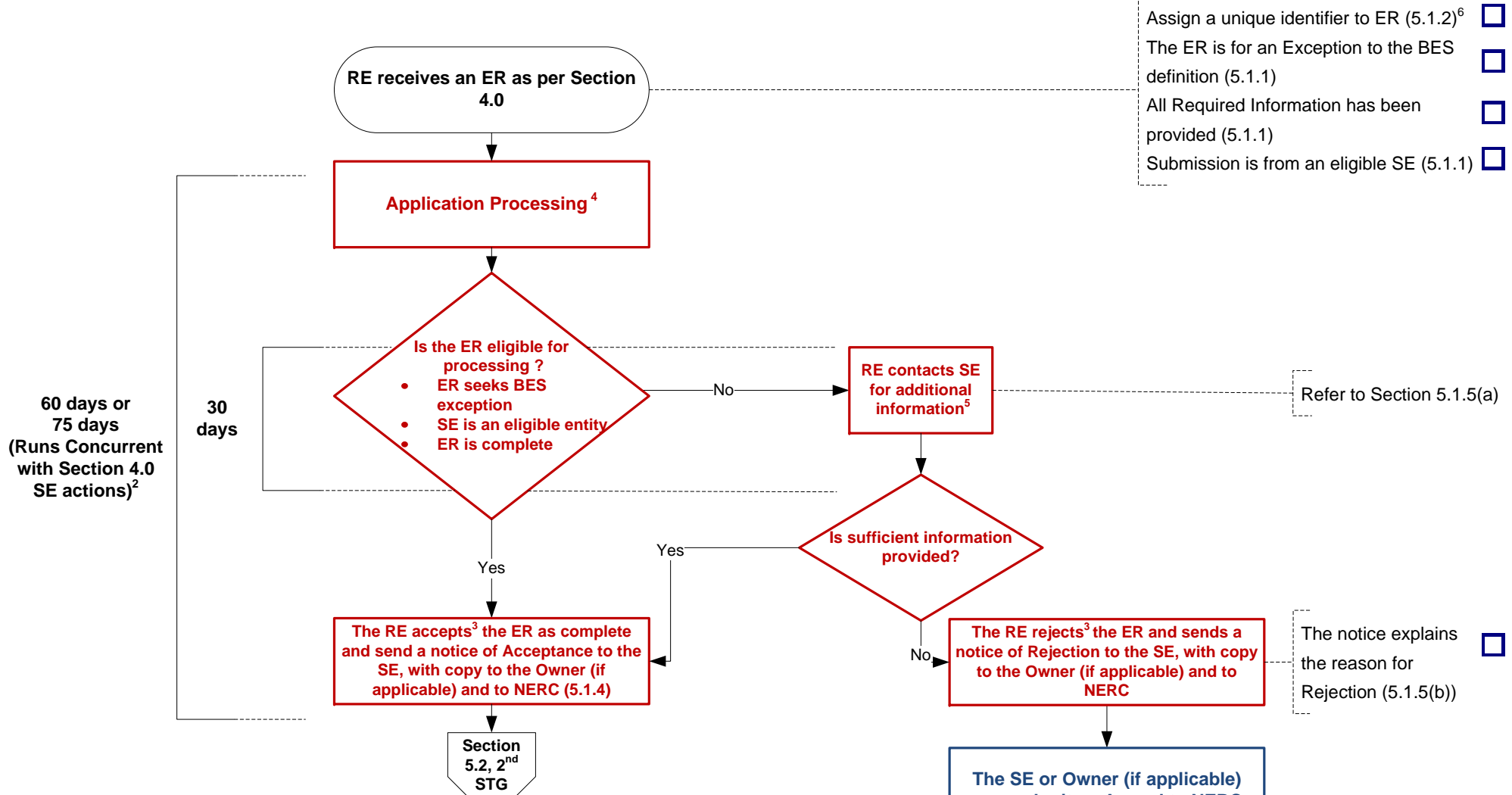
(from the Regional Entity's perspective)

### FIRST STAGE – Initial Screening

Timeline

Flowchart

Checklist



- Assign a unique identifier to ER (5.1.2)<sup>6</sup>
- The ER is for an Exception to the BES definition (5.1.1)
- All Required Information has been provided (5.1.1)
- Submission is from an eligible SE (5.1.1)

Refer to Section 5.1.5(a)

The notice explains the reason for Rejection (5.1.5(b))

<sup>2</sup> The RE will complete its initial screening of the ER Form and any responsive document filed by an Owner no later than either 60 calendar days after receiving the ER or 30 calendar days after receiving any responsive document from the Owner, whichever is later. Included in this timeframe is 45 days of the Section 4 Process since the action of the SE and RE run concurrently.

<sup>3</sup> The RE may either accept the ER in its entirety, reject the ER in its entirety, or if the ER is for more than one Element, may accept it with respect to a subset of the Elements and reject it with respect to the remainder based on the similarity of the evidence presented for the Exception Request.

<sup>4</sup> At any stage before the issuance of a final Recommendation, a Submitting Entity may provide supplemental information which may reset the evaluation timeline. (Section 6.0)

<sup>5</sup> If additional information is provided, the initial screening time will be extended to 15 days after the receipt of the additional information.

<sup>6</sup> When the RE is the SE, after a unique identifier is assigned the process proceeds to section 5.2 second stage.

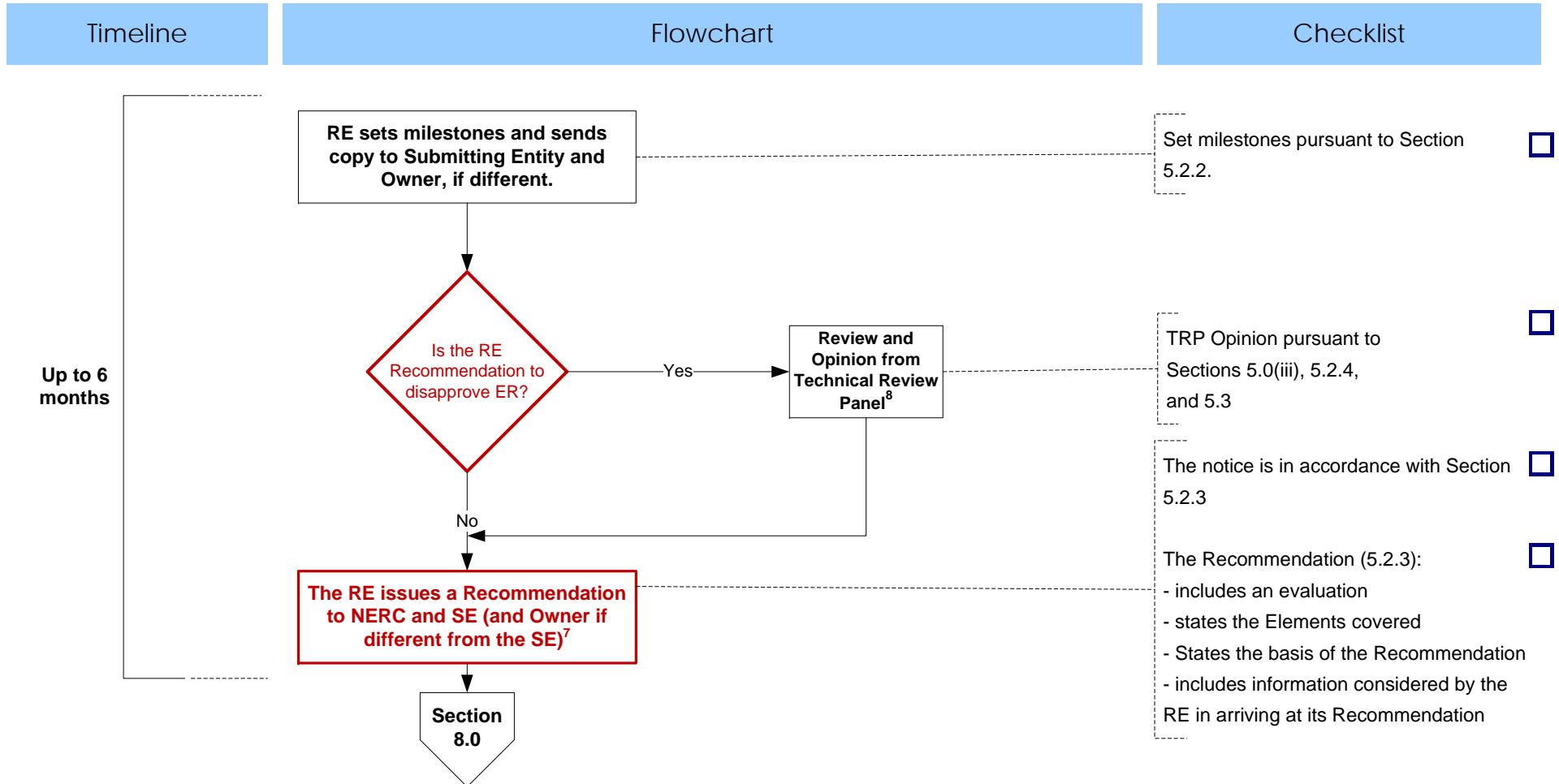
Draft document 05/24/2013

# BES Element Exception Process

## Section 5.0 – Review, acceptance or rejection, and recommendation regarding ER

(from the Regional Entity's perspective)

### SECOND STAGE – Substantive Review

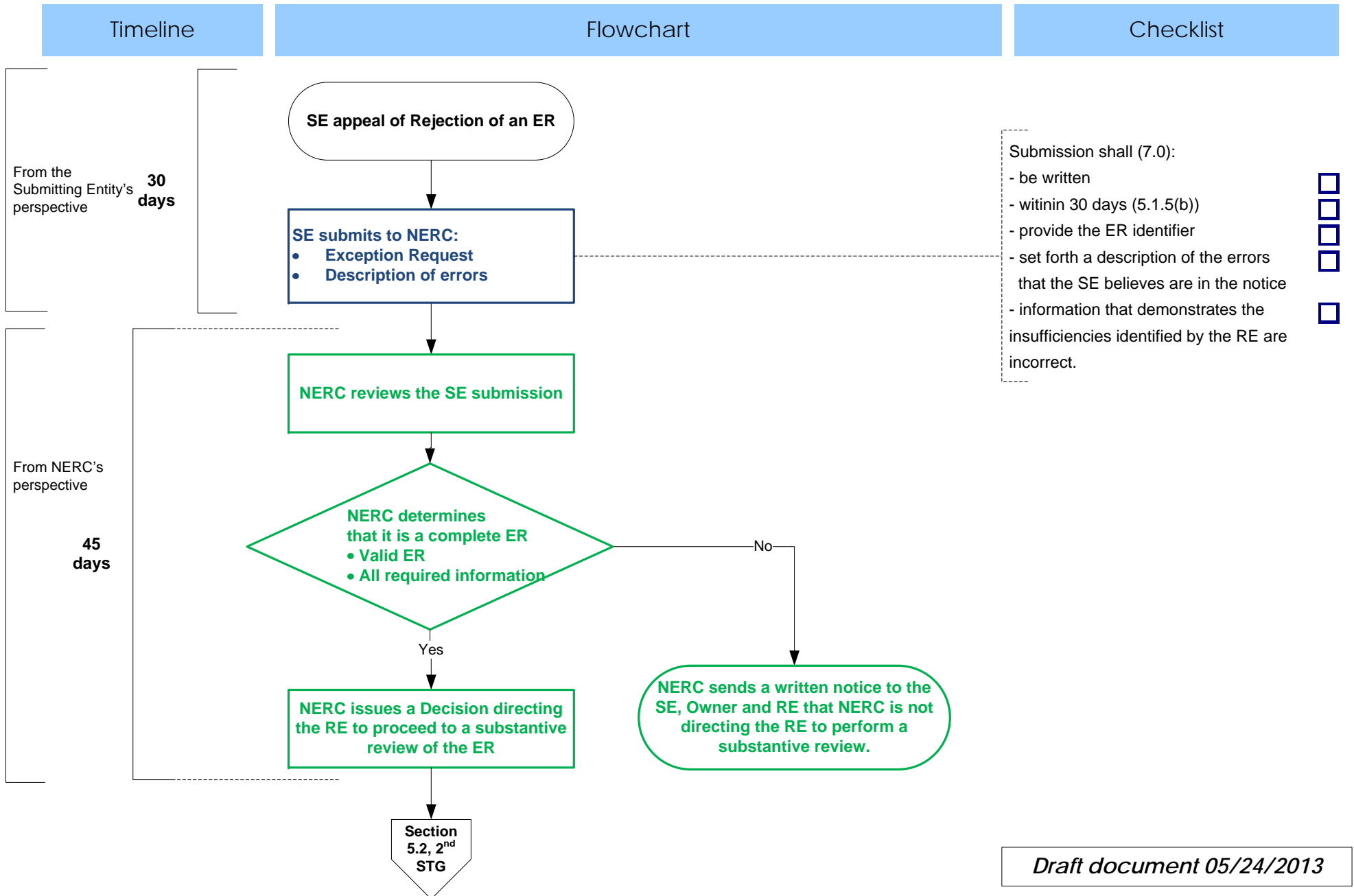


<sup>7</sup> At any stage, pursuant to section 6.0, before the issuance of a final Recommendation a Submitting Entity may provide supplemental information which may reset the evaluation timeline.

<sup>8</sup> A Technical Review Panel opinion is only required where a Regional Entity intends to issue a disapproval Recommendation to NERC. The Technical Review Panel consists of not less than three (3) individuals appointed by the Regional Entity senior executive (CEO, President, General Manager, etc.).

# BES Element Exception Process

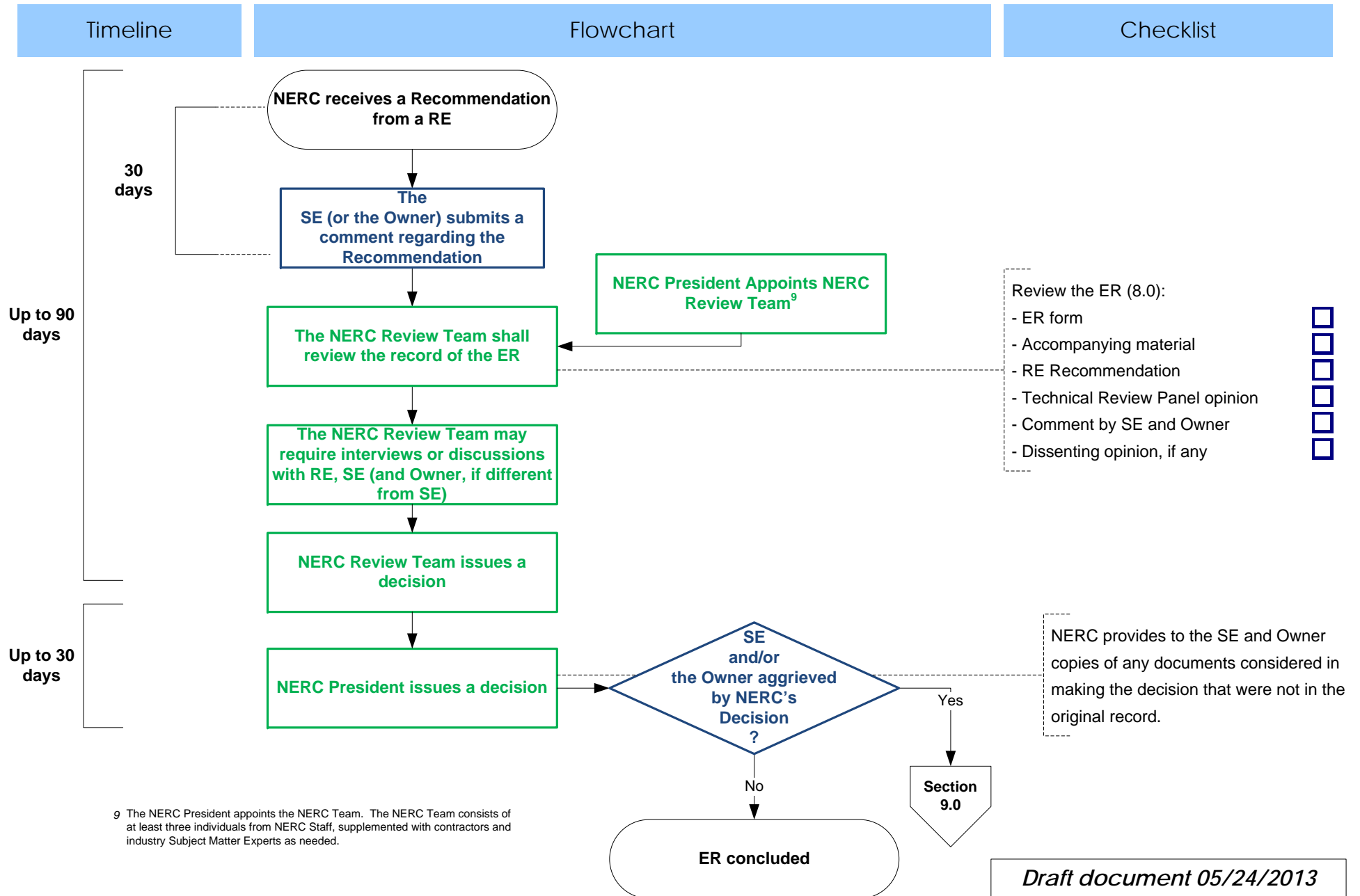
## Section 7.0 – Appeal of Rejection of an ER Application based on its completeness



# BES Element Exception Process

## Section 8.0 – Approval or Disapproval of an ER

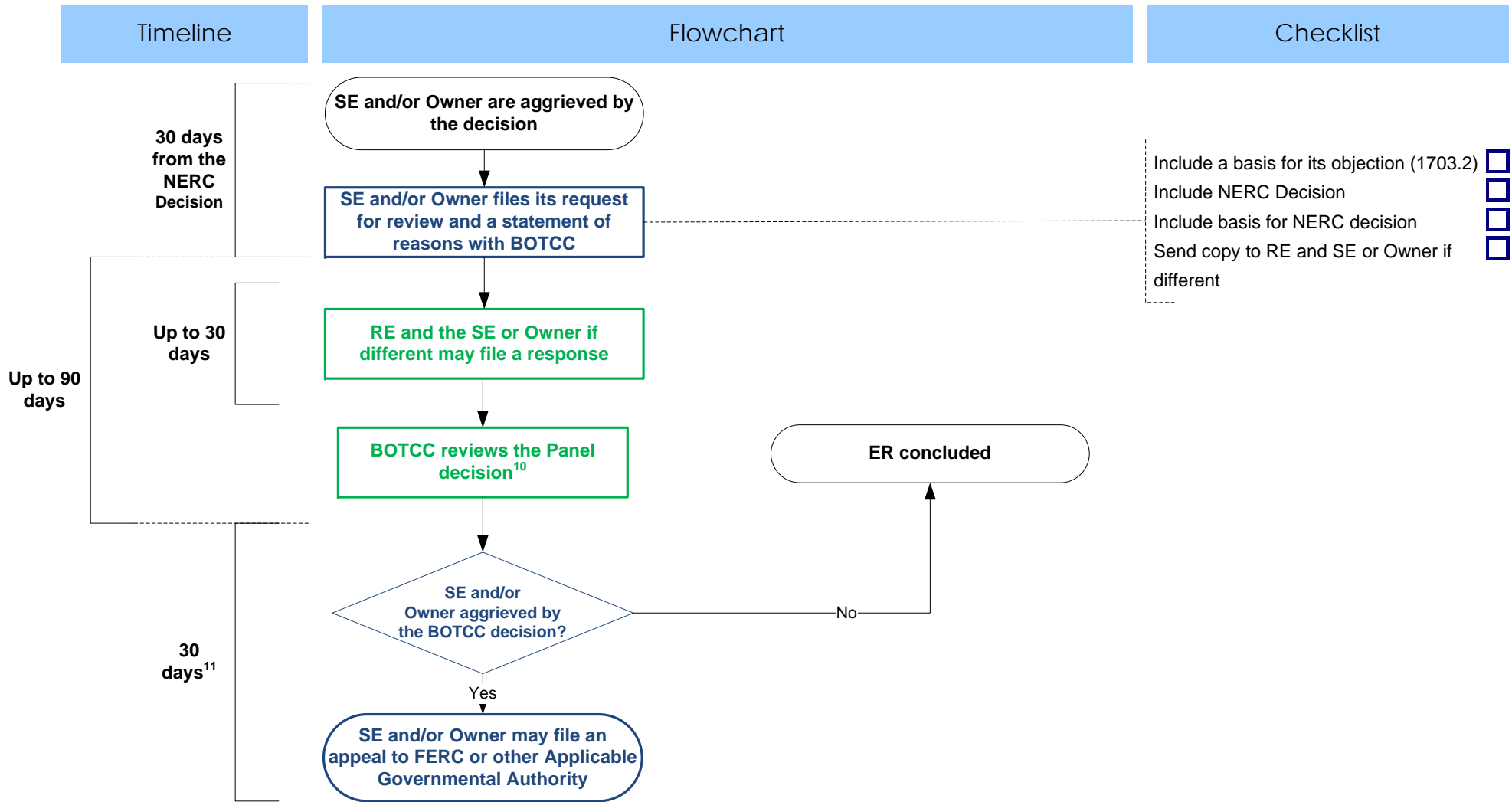
(from NERC's perspective)



# BES Element Exception Process

## Section 9 – NERC BOT Review of a Decision

(from Submitting Entity and NERC perspective)



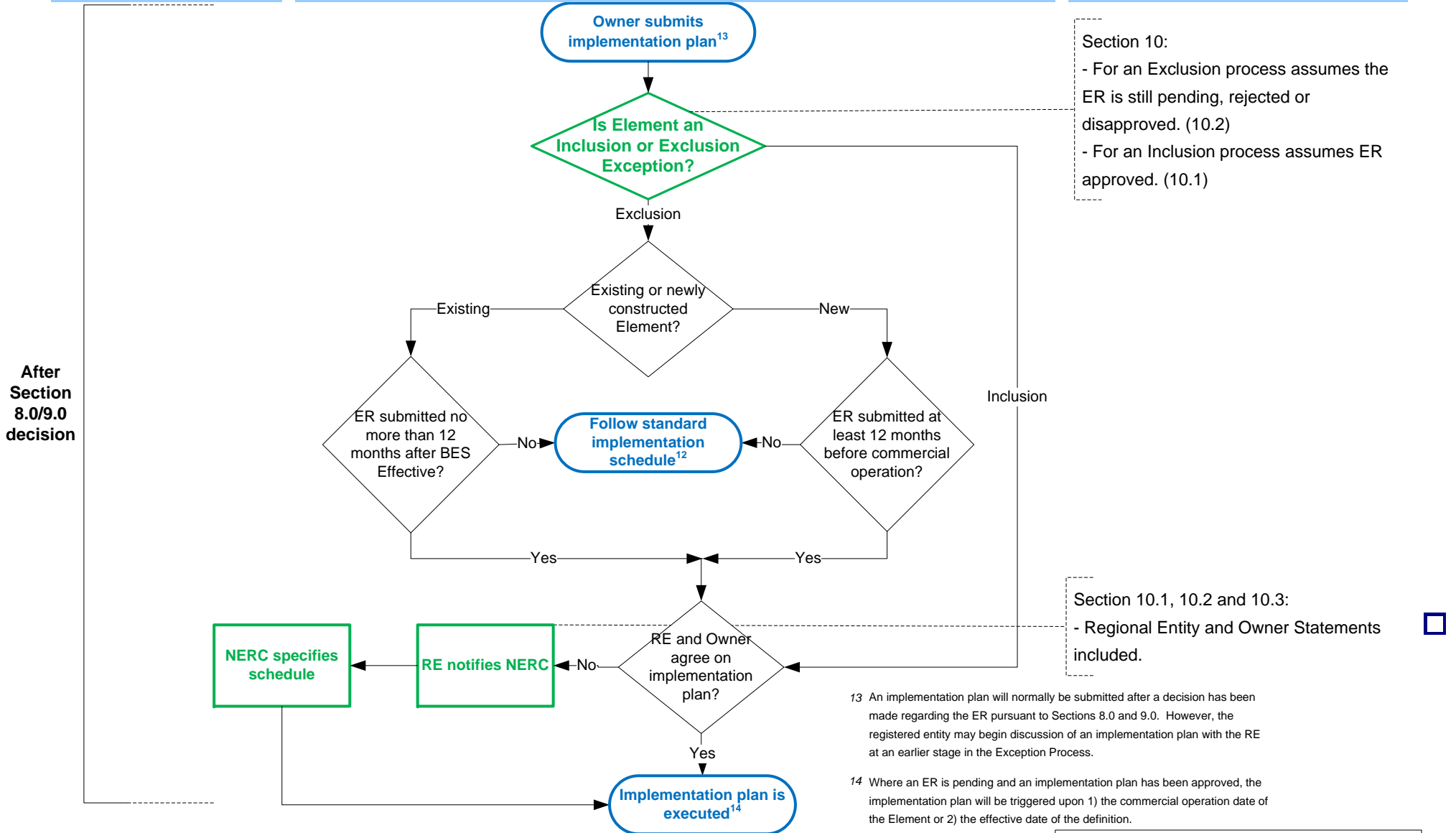
<sup>10</sup> The Board of Trustees Compliance Committee may extend the deadline date for its decision to a date more than 90 days following submission of the challenge, by issuing a notice to the SE, the Owner (if different) and the RE stating the revised deadline date and the reason for the extension.

<sup>11</sup> Within thirty (30) days following the date of the decision of the BOTCC, or within such other time period as is provided for in the legal authority, rules or procedures of the Applicable Governmental Authority.

# BES Element Exception Process

## Section 10.0 – Implementation Period for Exceptions

(from the Regional Entity's and NERC's perspective)



Section 10:

- For an Exclusion process assumes the ER is still pending, rejected or disapproved. (10.2)
- For an Inclusion process assumes ER approved. (10.1)

Section 10.1, 10.2 and 10.3:

- Regional Entity and Owner Statements included. □

<sup>13</sup> An implementation plan will normally be submitted after a decision has been made regarding the ER pursuant to Sections 8.0 and 9.0. However, the registered entity may begin discussion of an implementation plan with the RE at an earlier stage in the Exception Process.

<sup>14</sup> Where an ER is pending and an implementation plan has been approved, the implementation plan will be triggered upon 1) the commercial operation date of the Element or 2) the effective date of the definition.

<sup>12</sup> The effective date if the first day of the second quarter after regulatory approval (July 1, 2013 for U.S. jurisdictional entities) or if no regulatory approval is required then the first day of the second quarter after NERC Board adoption. The implementation period is 24 months after the applicable effective date.

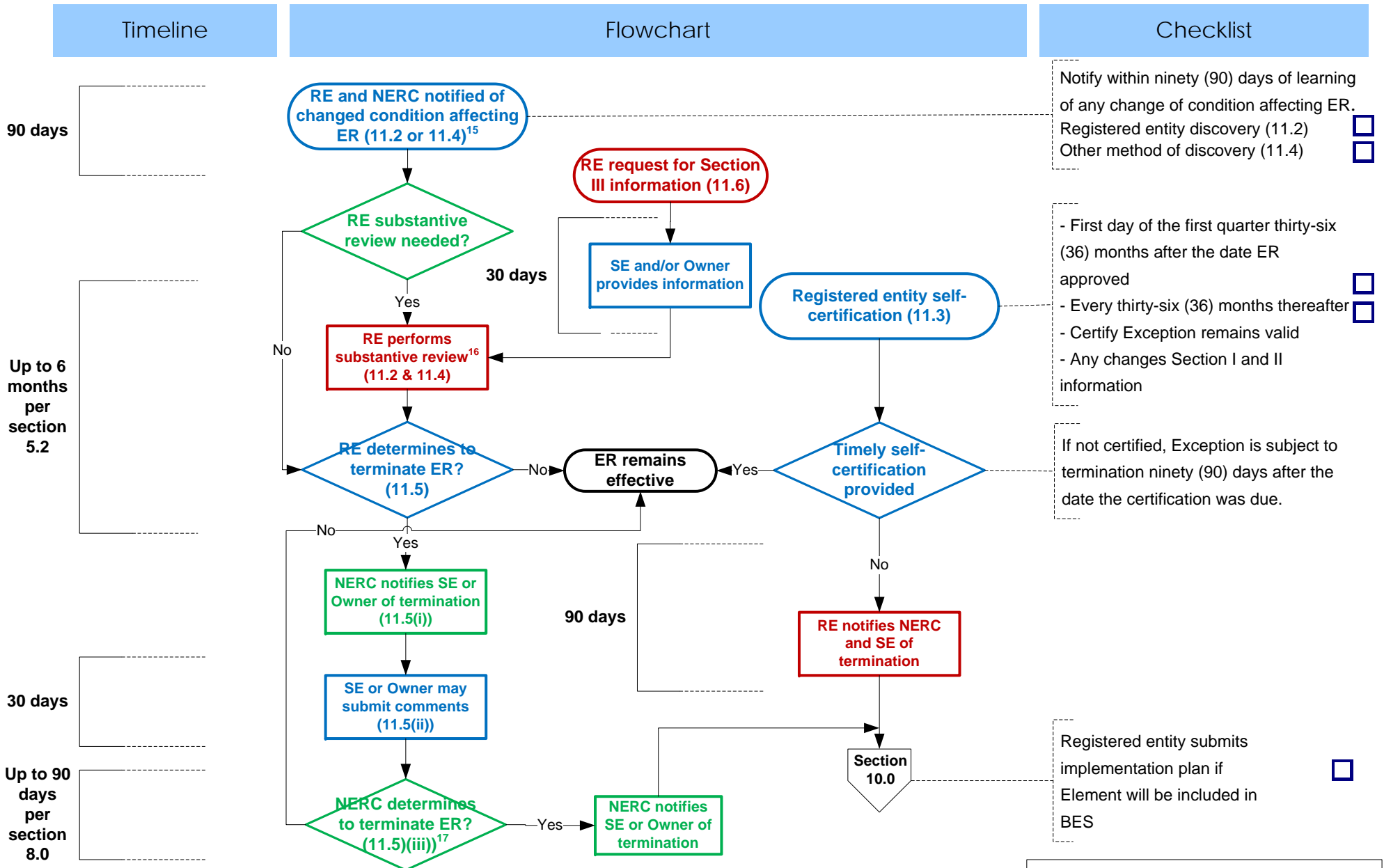
*Draft document 05/24/2013*



# BES Element Exception Process

## Section 11.0 – Termination of an Approved Exception

(from the Regional Entity's and NERC's perspective)



<sup>15</sup> An Exception is typically approved without a specified date of termination, see section 11.1.

<sup>17</sup> NERC review is in accordance with Section 8.0.

<sup>16</sup> Upon request by the Regional Entity, the Submitting Entity(ies) and/or Owner if different shall provide within thirty (30) days the most recent versions of any Section III Required Information so requested.