

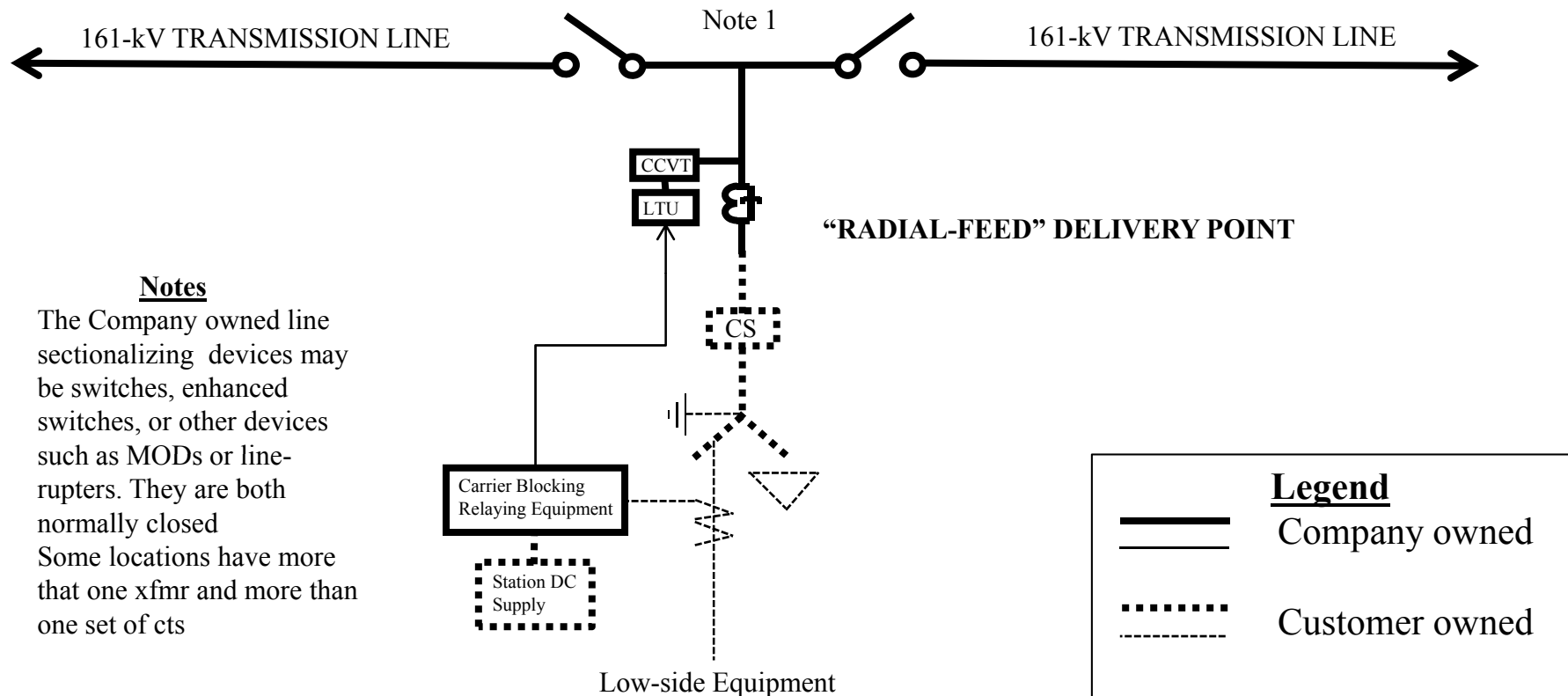


BES Boundary Questions for PRC-005-2 Applicability

The following protection systems are shown as boundary situations where clarification is needed as to their being included under PRC-005-2 requirements. Questions are in **Red**.



Question 1– Carrier Blocking Radial Tap with Customer’s CTs and DC source.



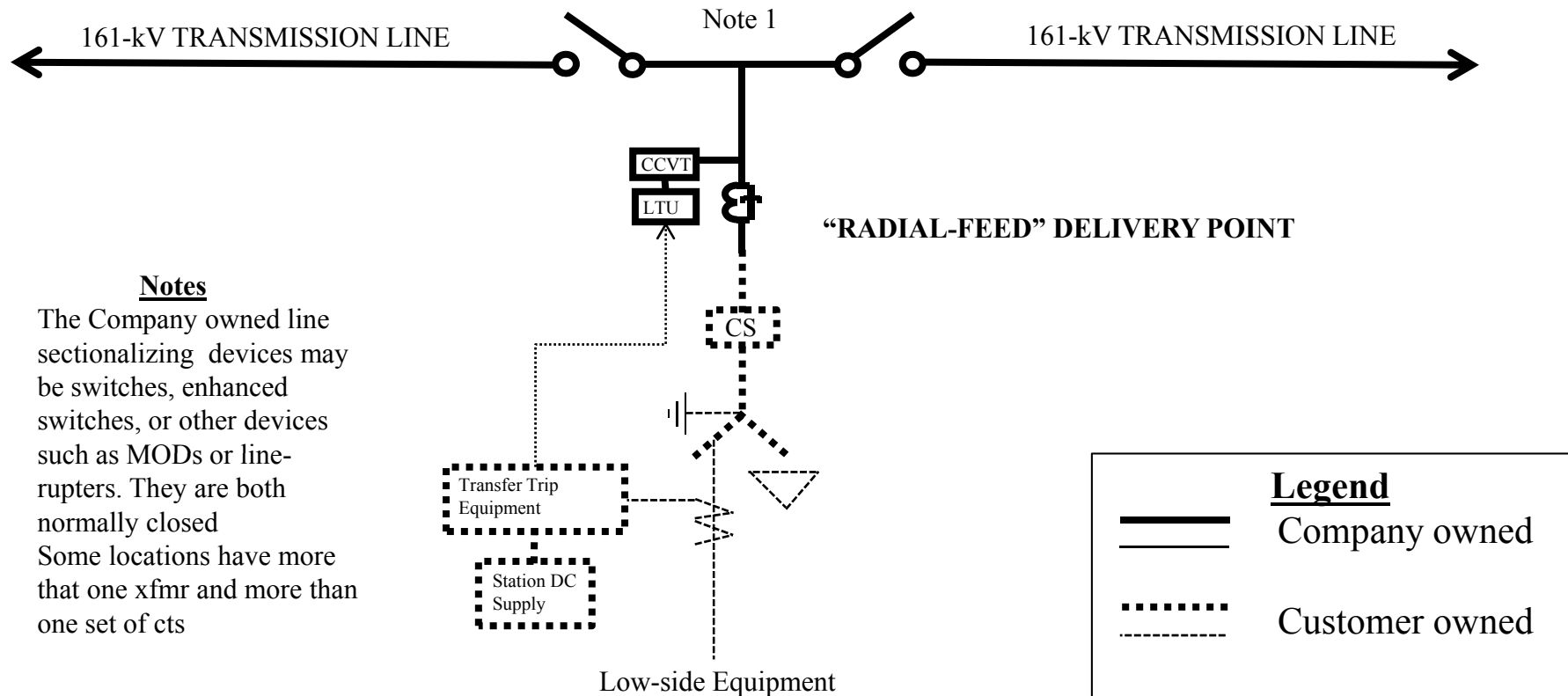
Notes

1. The Company owned line sectionalizing devices may be switches, enhanced switches, or other devices such as MODs or line-rupters. They are both normally closed
2. Some locations have more than one xfmr and more than one set of cts

Is the carrier blocking protection system included in PRC-005-2 scope?



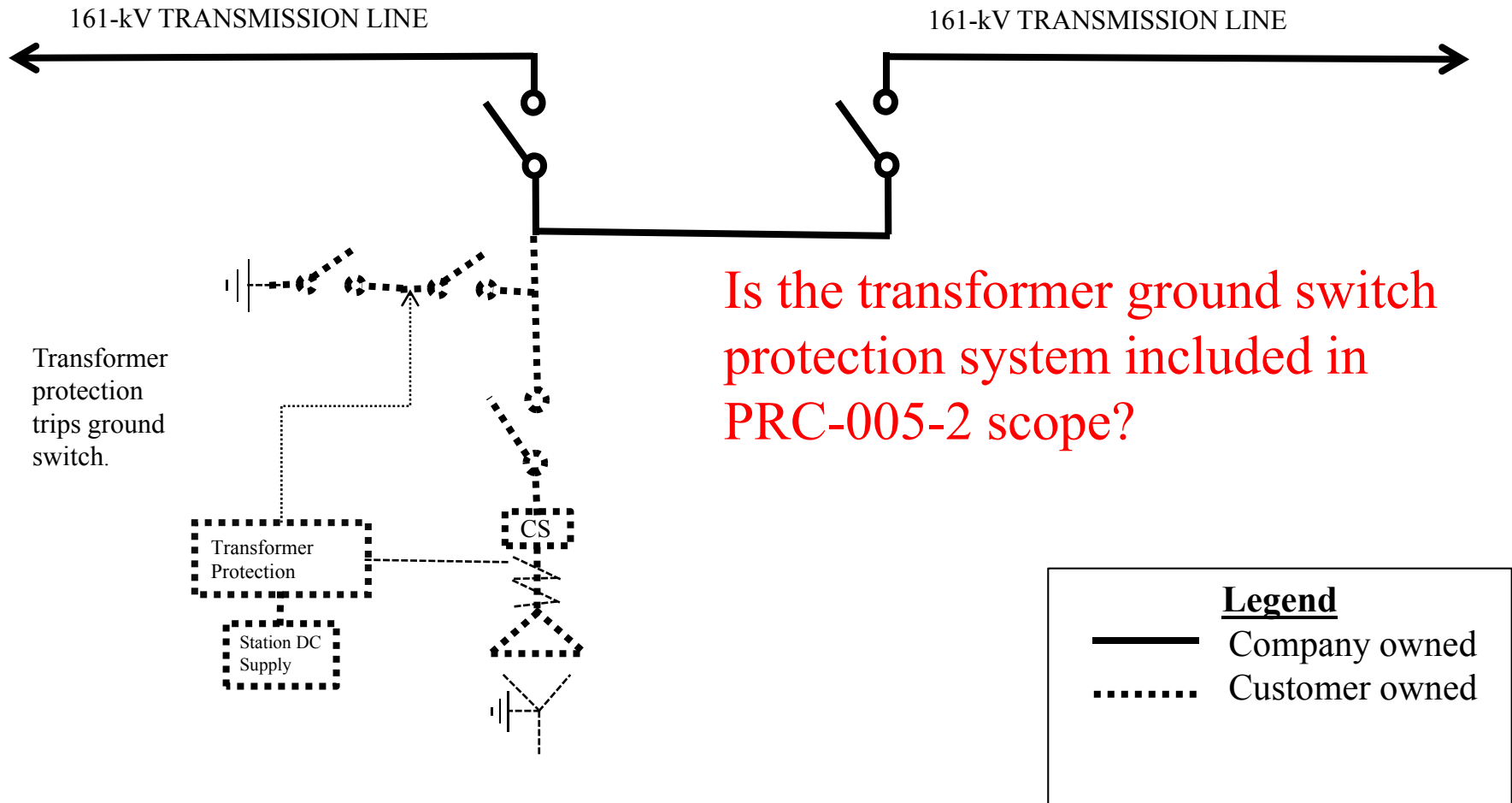
Question 2 - Transfer Trip – Radial Tap with Customer's CTs and DC source.



Is the transformer transfer trip protection system included in PRC-005-2 scope?

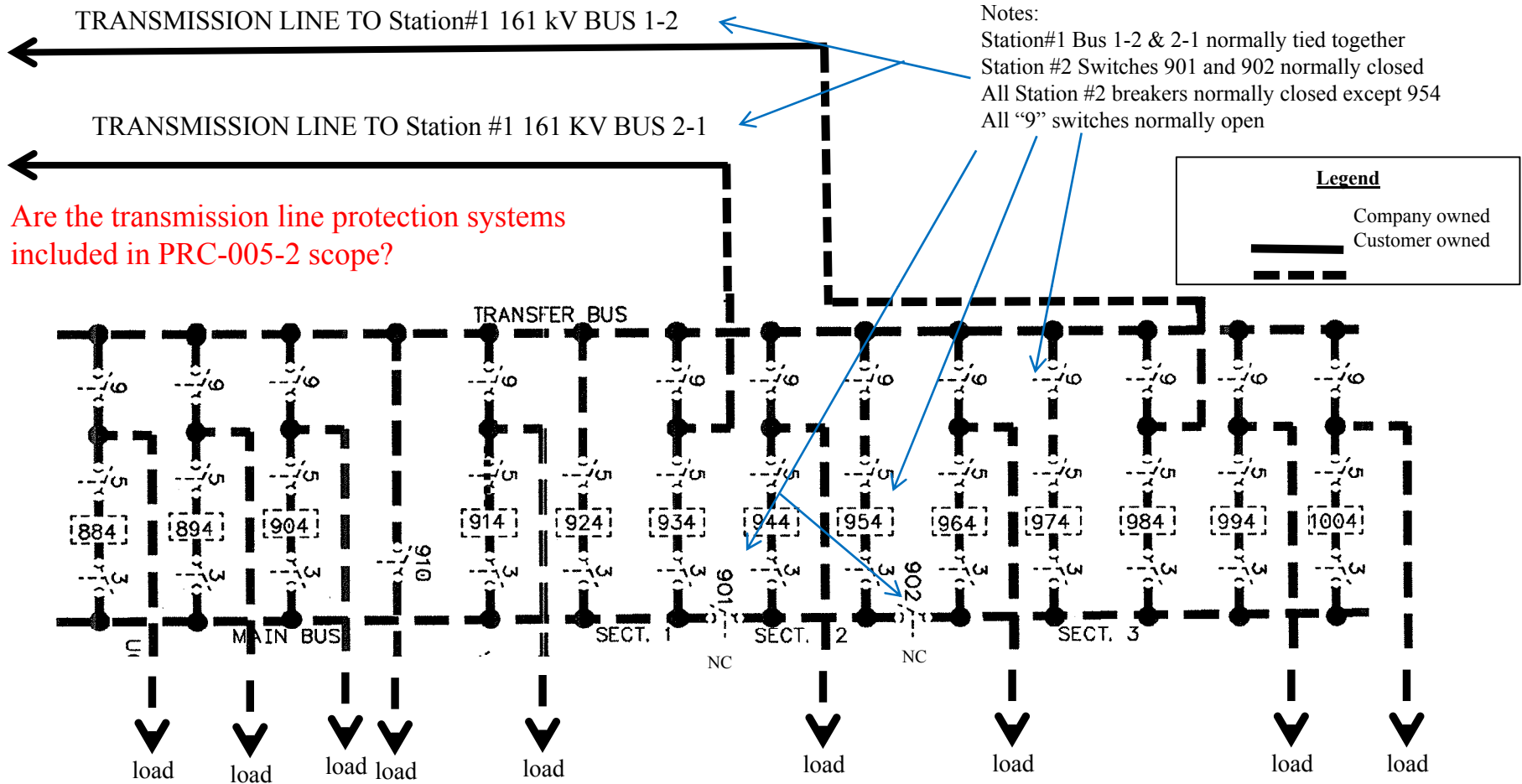


Question 3 - FIS Connected to TVA Network Line on Source Side of Circuit Switcher





Question 4 – Two 161-kV feeds from separate buses within one Company Owned Station

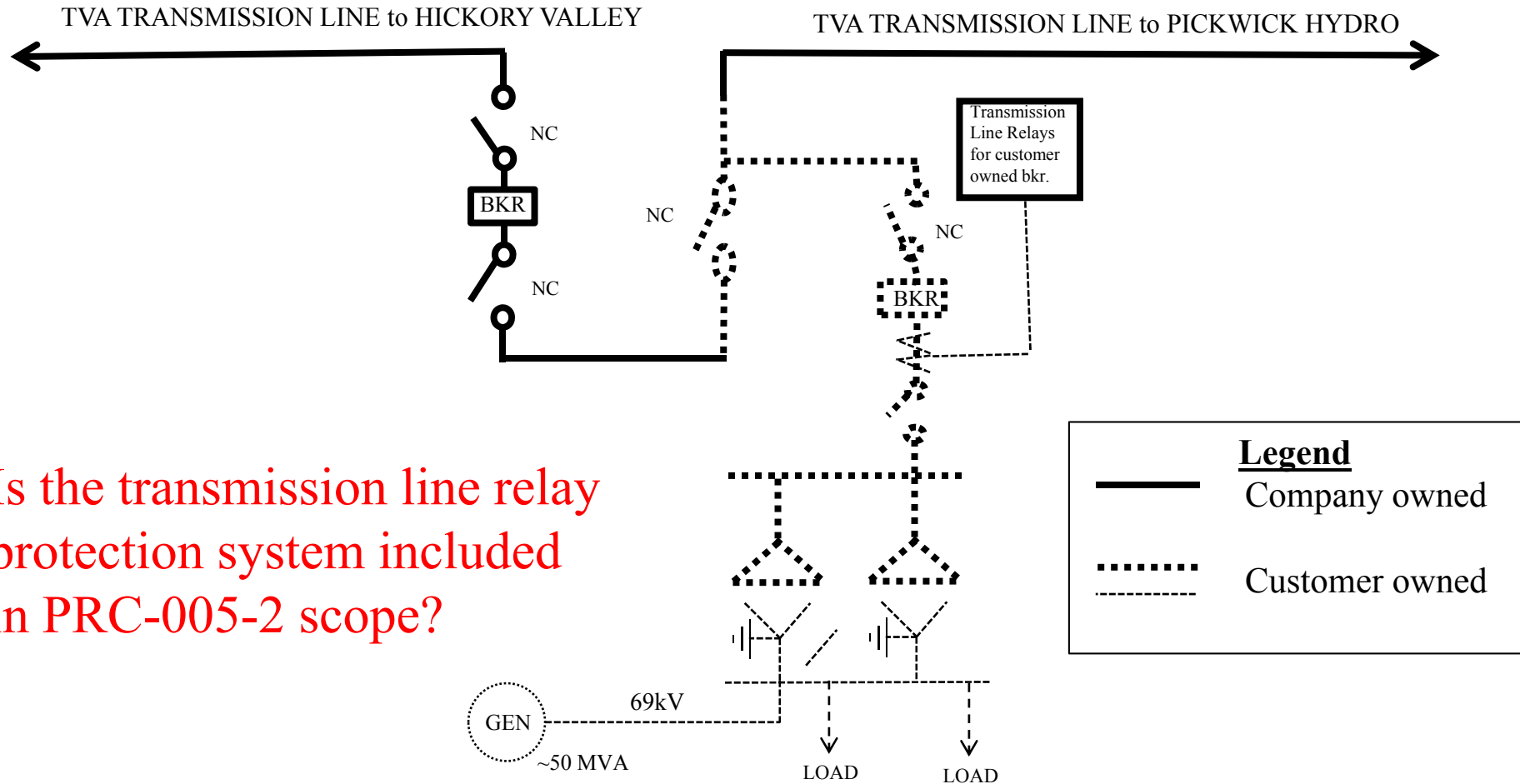


Are the transmission line protection systems included in PRC-005-2 scope?

Only when the Station #1 intertie bank is lost will network flows occur through normally closed Switches 901 and 902.



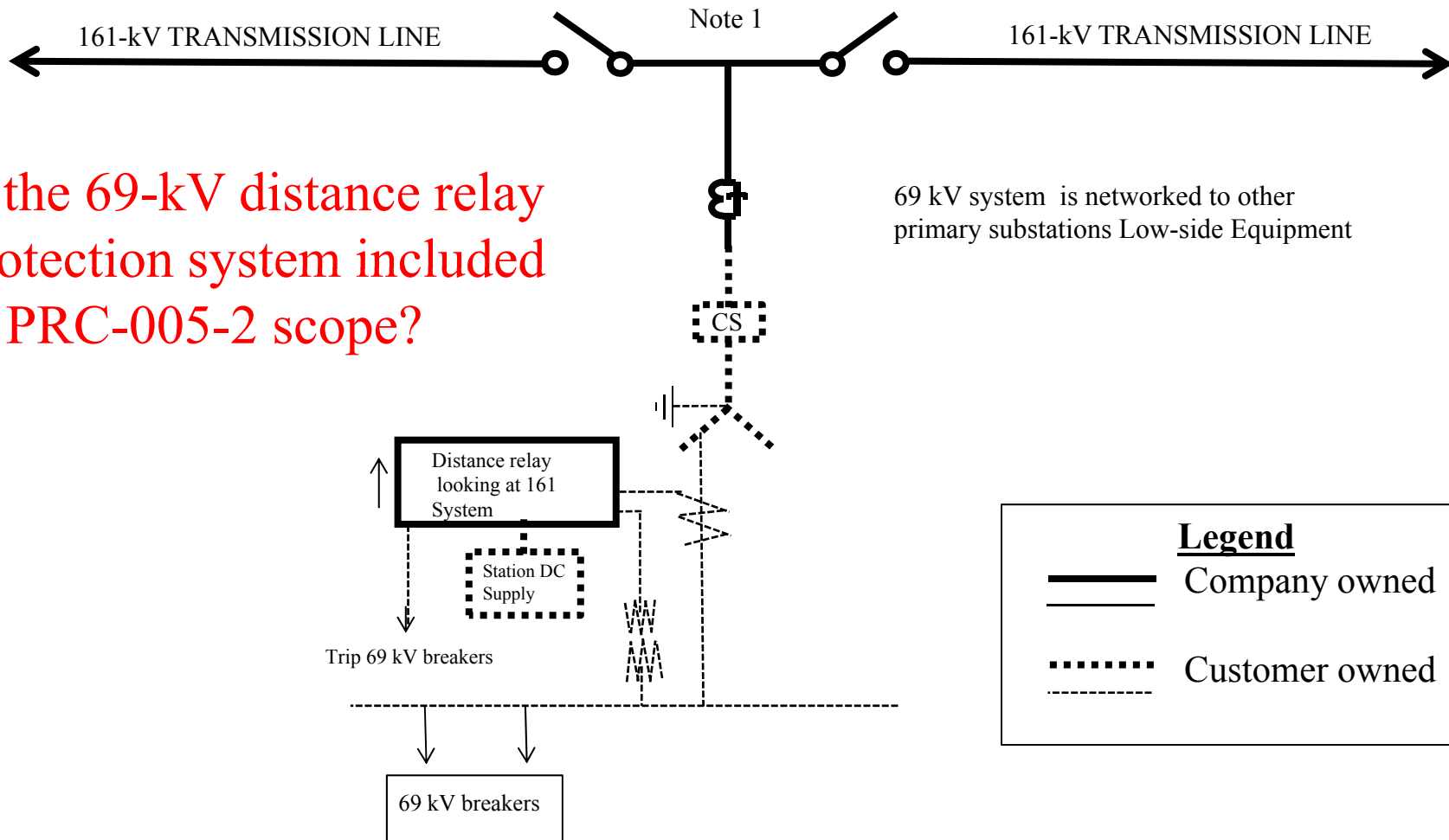
Question 5 – Bus, Switch, and CTs for Company Owned relays and a Generator



Is the transmission line relay protection system included in PRC-005-2 scope?



Question 6 – Relaying for “3-Terminal line uses customer protective devices and circuits.



Is the 69-kV distance relay protection system included in PRC-005-2 scope?