

BES DEFINITION

TRANSMISSION ELEMENT

An **element** is "Any electrical device with terminals that may be connected to other electrical devices such as a generator, transformer, circuit breaker, bus section, or transmission line. An element may be comprised of one or more components."

BES Definition

Greater than 100 kV?

YES

NO

Meets BES Definition Inclusion Criteria?
I1 – Certain transformers
I2, I3 – Certain generation
I4 - Blackstart Resources and designated Cranking Paths
I5 – Certain dispersed power producing resources

NO

Meets BES Definition Exclusion Criteria?
E1 - Defined radial system
E2 - Specified generation
E3 - Defined Local Distribution Network

Meets BES Definition Inclusion Criteria?
I4 - Blackstart Resources and designated Cranking Paths

NO

YES

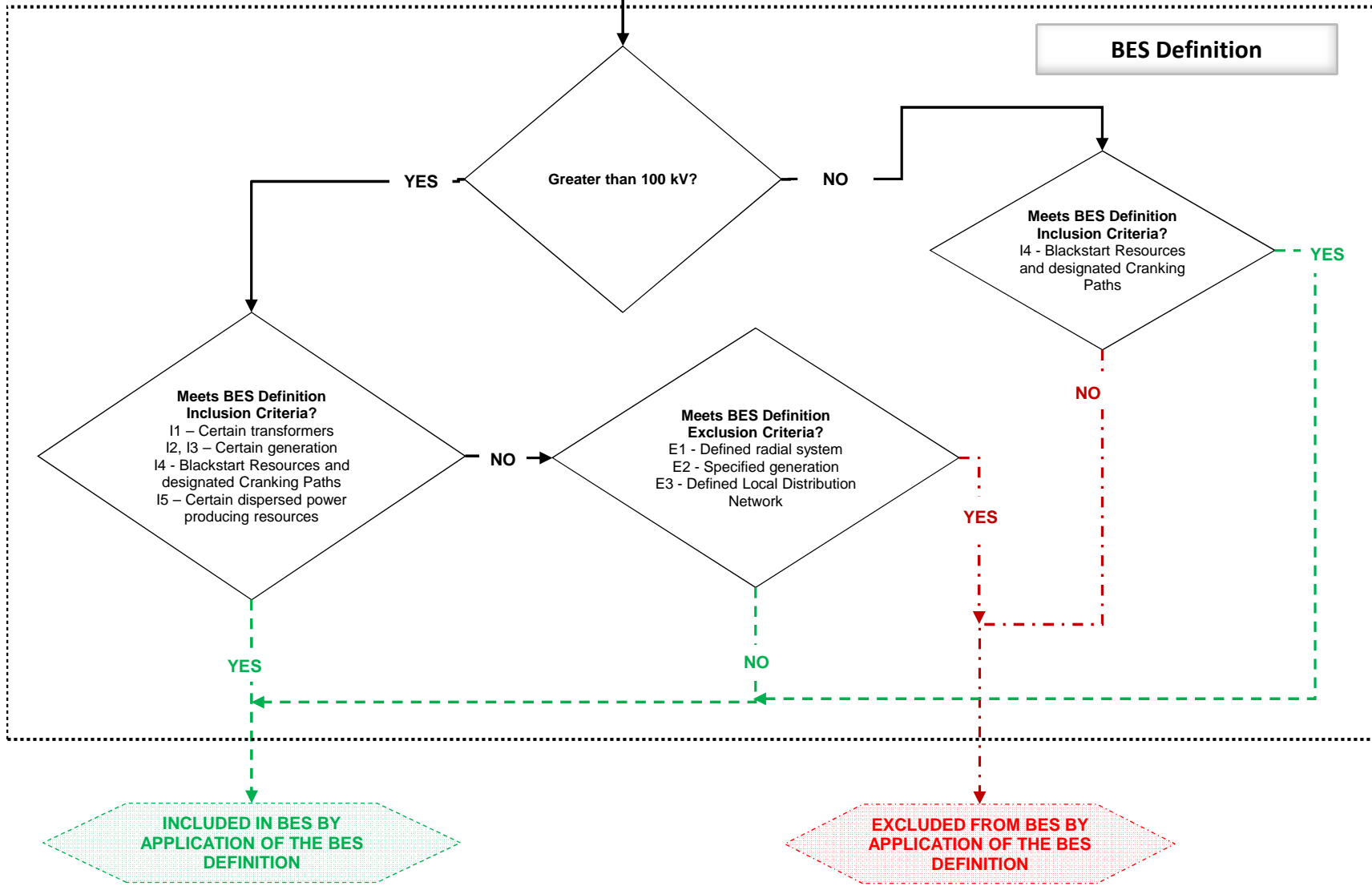
YES

NO

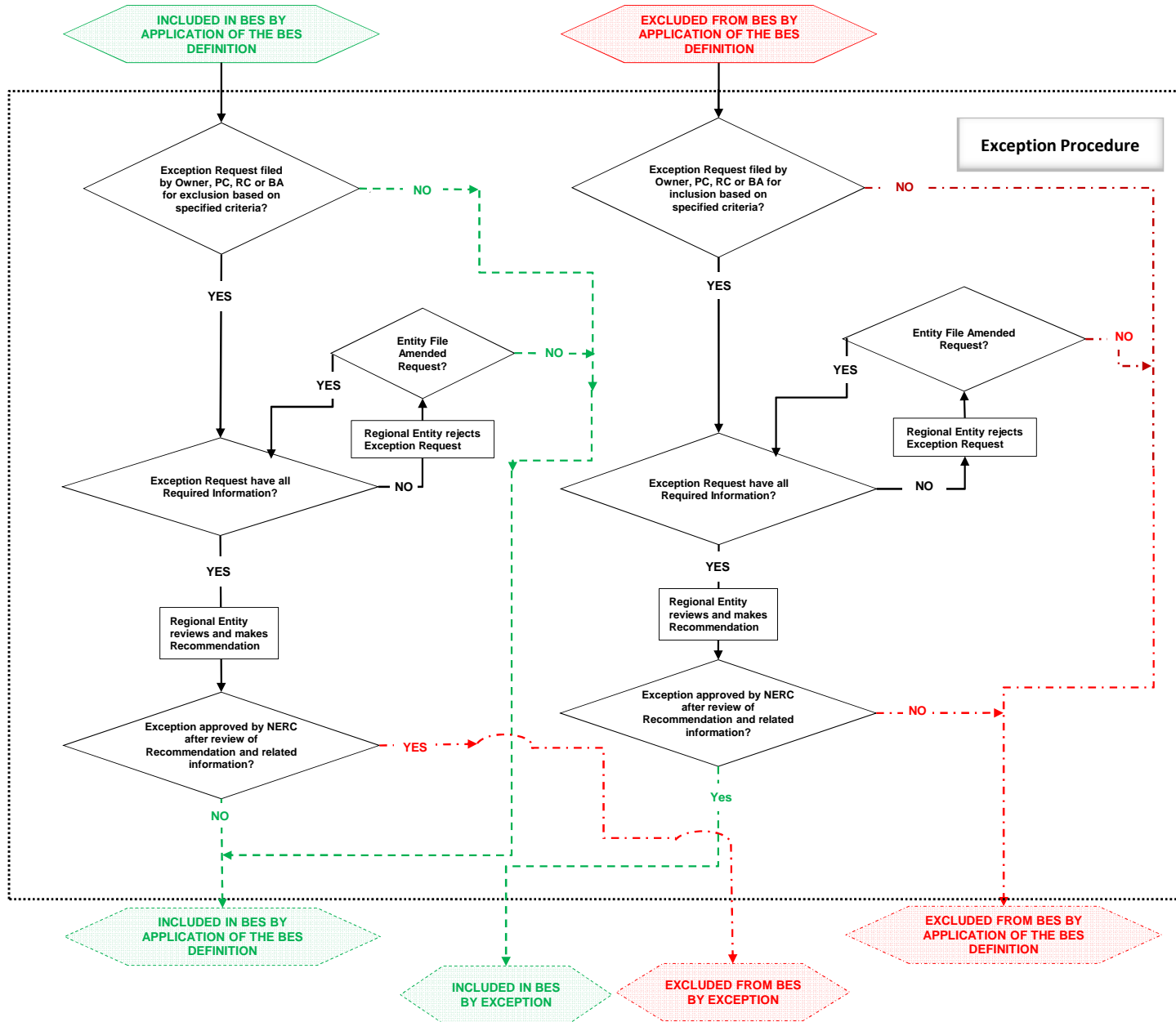
YES

INCLUDED IN BES BY APPLICATION OF THE BES DEFINITION

EXCLUDED FROM BES BY APPLICATION OF THE BES DEFINITION



BES Exception Process



Appeal of a NERC Decision on a BES Exception Request

