

NERC

NORTH AMERICAN ELECTRIC
RELIABILITY CORPORATION

Key Compliance Trends (Item 3.a)

RELIABILITY | ACCOUNTABILITY



194 new violations received in May

114 FERC filings in May

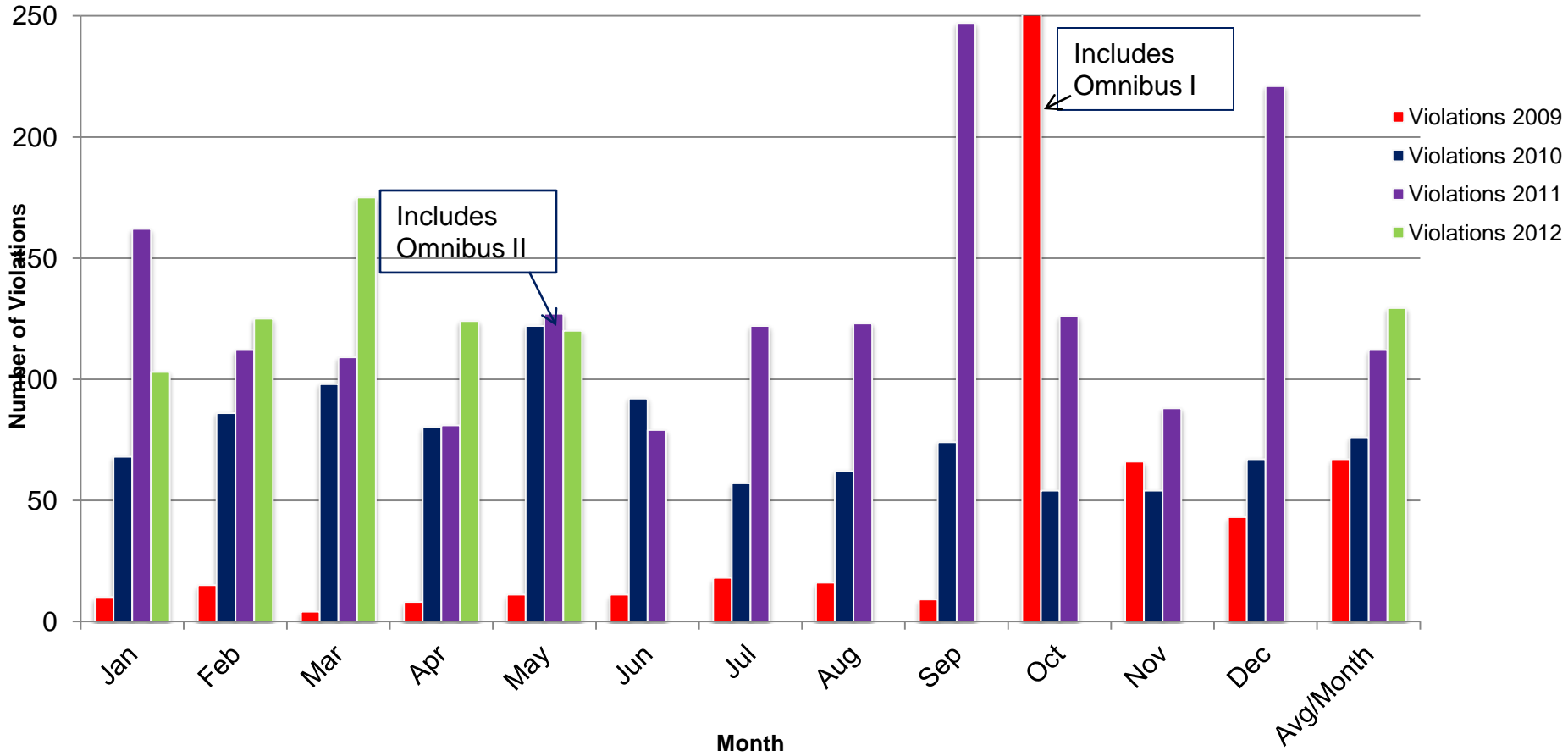
- 55 FFT violations
- 59 violations (47 via spreadsheet NOPs and 12 via full NOPs)
- Violation monthly receipt average
 - Last six months— 232 violations per month

145 new violations received in April

125 FERC filings in April

- 66 FFT violations
- 59 violations (40 via spreadsheet NOPs and 19 via full NOPs)

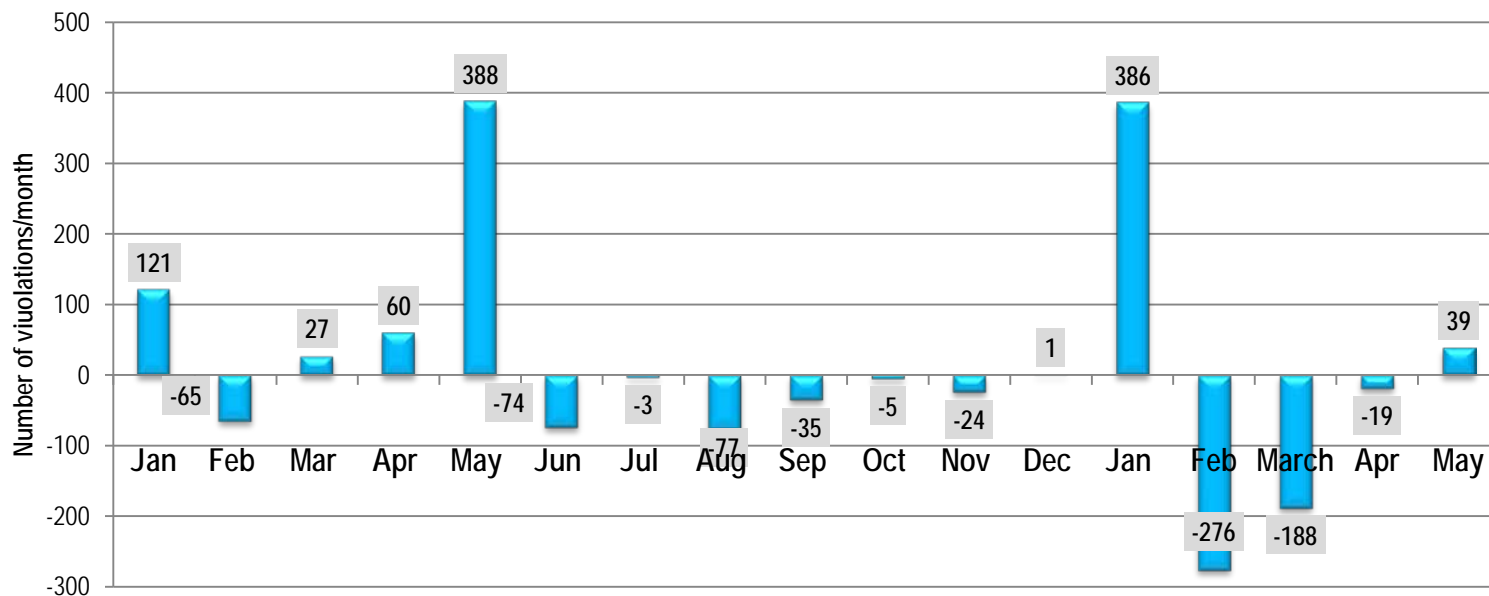
Violations Approved by BOTCC



Total Filed with FERC

	Full NOPs	SNOPs	FFTs	Total Filed
January	21	51	57	129
February	29	63	46	138
March	30	99	21	150
April	19	40	66	125
May	12	47	55	114

Violation Processing in 2011 and 2012



New	218	212	190	219	581	223	211	166	262	247	212	203	545	131	171	145	194	4130
Dismissed and Filed	97	277	163	159	193	297	214	243	297	252	236	202	159	407	359	164	155	3874

- NERC Caseload Index--Total number of Active Violations divided by the sum of the 6-month average of number of violations filed with FERC plus the 6-month average number of dismissals
- Regional Caseload Index-- Total number of Active Violations divided by the sum of the 6-month average of number of violations filed with NERC plus the 6-month average number of dismissals
- Active violations include all violations as of May 31, 2012 that are not closed or dismissed. This includes violations that are being processed by NERC or have been sent to FERC and are awaiting closing actions

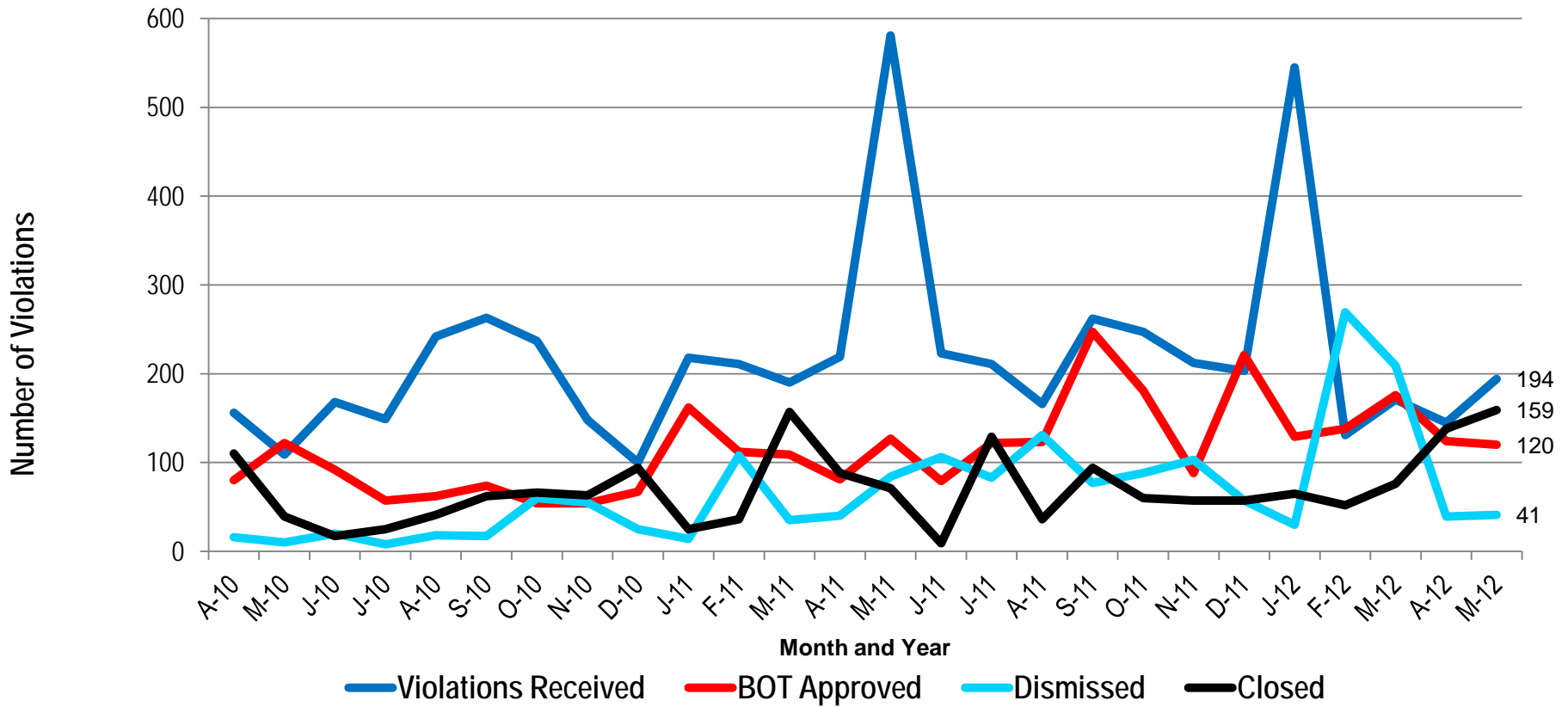
**NERC Caseload Index –as of May 31, 2012
 (months)**

	Active Violations	Violations Filed with FERC (December 1, 2011 to May 31, 2012)	Total # of Dismissals (December 1, 2011 to May 31, 2012)	Caseload Index (Months)
NERC	3644	801	645	15.1

Regional Caseload Index

Regional Caseload Index –as of May 31, 2012 (months)				
	Active Violations	Violations Filed with NERC (December 1, 2011 to May 31, 2012)	Total # of Dismissals (December 1, 2011 to May 31, 2012)	Caseload Index (Months)
FRCC	140	44	7	16.5
MRO	158	57	43	9.5
NPCC	170	54	5	17.3
RFC	743	276	75	12.7
SERC	547	63	65	25.6
SPP RE	380	104	34	16.6
TRE	332	55	28	24.0
WECC	746 197 'On-hold' violations excluded	322	473	5.6

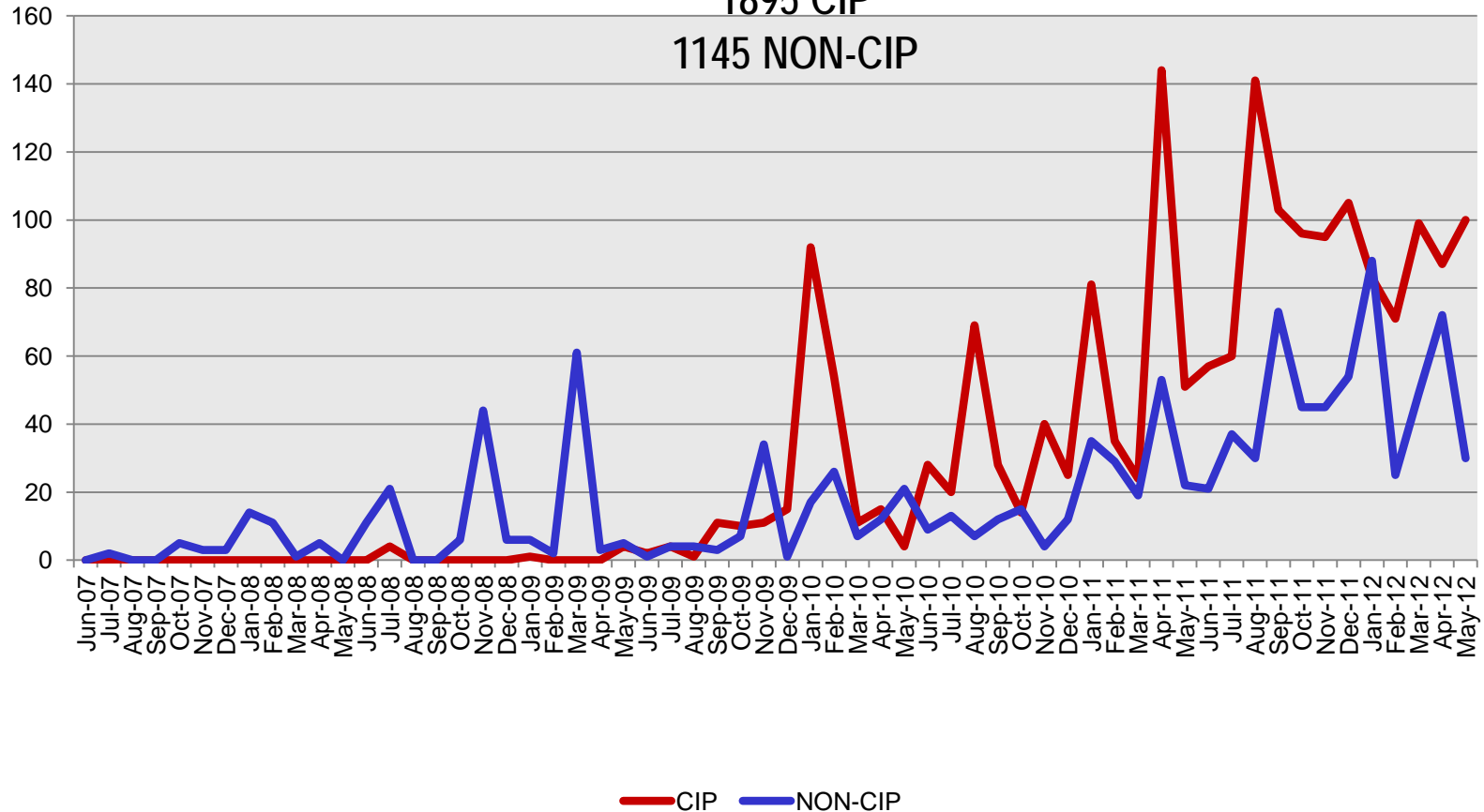
Violations In/Out Trend



NERC Work Violations - 3040 total violations

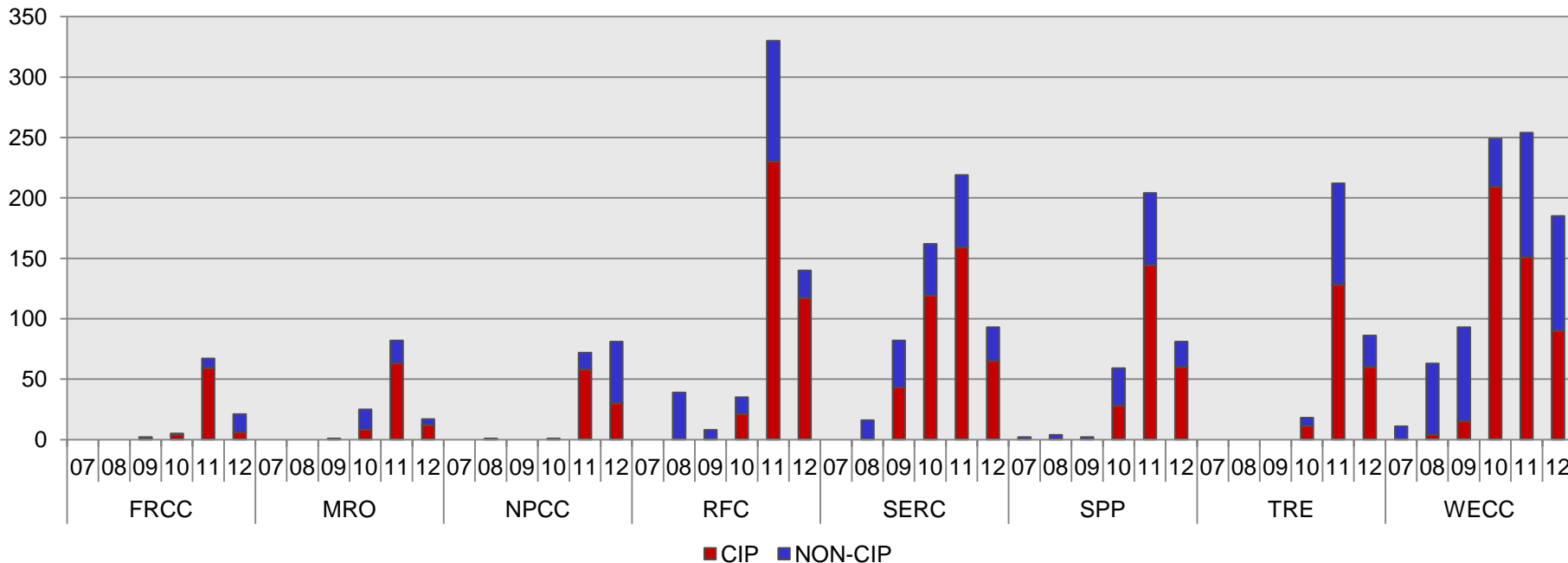
1895 CIP

1145 NON-CIP

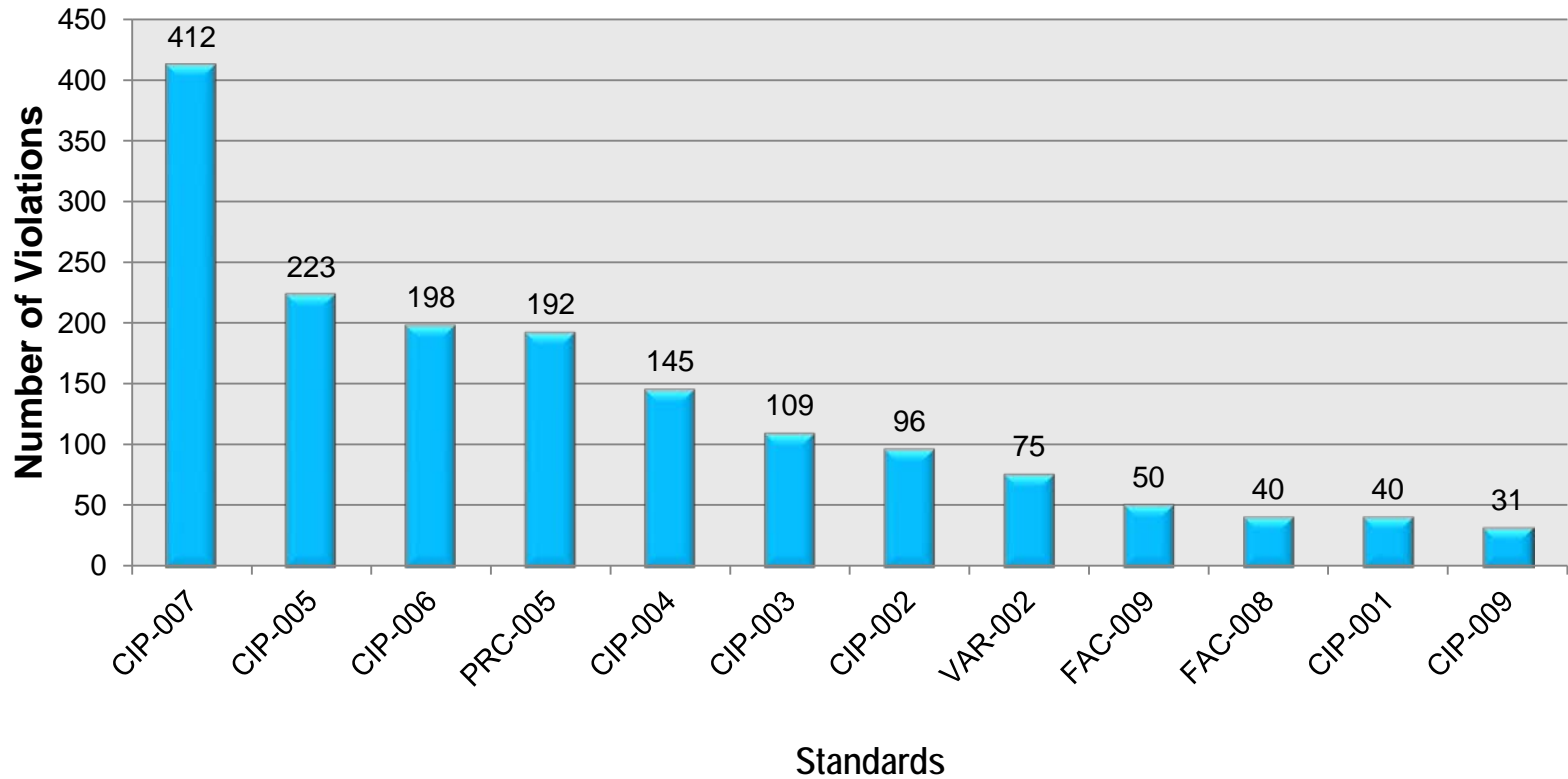


NERC Work CIP and Non-CIP Violations by Region

*NERC Work Violations - for CIP and NON-CIP
from 2007 to May 2012*



Top 12 Enforceable Standards – Violated Active and Closed from June 1, 2011 to May 31, 2012



Top 20 Enforceable Standards – Violated Active and Closed Violations thru May 31, 2012

