

NERC News: December

ERO Executive Spotlight

Jim Albright
President and CEO,
Texas Reliability Entity, Inc.



Recommendations from Winter Storm Elliott Report Important for Grid Reliability

Assessing and reporting on the reliability and adequacy of the bulk power system (BPS) is one of the fundamental functions the Electric Reliability Organization (ERO) Enterprise provides. After any major event impacting the BPS, teams of subject matter experts from NERC and the Regional Entities conduct analyses to understand what led to any interruptions to the grid and then share that knowledge with industry and other stakeholders.

One such collaborative report was the [Winter Storm Elliott Report: Inquiry into Bulk-Power System Operations During December 2022](#), published in November 2023. Authored by Federal Energy Regulatory Commission (FERC), NERC, and Regional Entity staff, this report examined the most recent of a series of cold weather events that have underscored the importance of electric reliability. While the bulk of Elliott's impacts were felt in the Eastern Interconnection, which experienced the largest ever controlled firm load shed in its history, the lessons learned and recommendations from the report are applicable across the BPS.

Report recommendations include:

- Conduct an independent technical review of the causes of cold-related mechanical and electrical generation outages to identify preventive measures.
- Conduct a joint FERC, NERC, and Regional Entity study to evaluate blackstart unit readiness for cold weather.
- Congressional and state legislation or regulation is needed to establish reliability rules for natural gas infrastructure to ensure cold weather reliability.
- The North American Energy Standards Board (NAESB) should convene a meeting of gas and electric grid operators and gas distribution companies to improve communication.

The report notes this was the fifth event in the last 11

years where unplanned cold weather-related outages jeopardized grid reliability. Winter Storm Elliott further underscored the importance of implementing the cold weather Reliability Standards and the need for vigilant planning and preparation for all extreme weather events. Last year in this [space](#), I detailed the state-level rules changes that were implemented in Texas in response to Winter Storm Uri. Another report, NERC's [2023–2024 Winter Reliability Assessment](#), advised that much of the North American BPS is at risk of insufficient electricity supplies during peak winter conditions. This is why assessing risk from extreme weather events and identifying ways industry can enhance BPS resilience are key aspects of the ERO's long-term strategy.

Texas RE staff recently presented a summary of the findings from the Winter Storm Elliott report to the Public Utility Commission of Texas (PUCT) at an open meeting. We've been very intentional about enhancing coordination and communication in the energy and electric industries in Texas, just as the rest of the ERO Enterprise has been increasing its focus on outreach to state and provincial leaders that make vital decisions impacting grid reliability. We file all major reports and assessments with the PUCT and also inform other critical infrastructure leadership such as the Railroad Commission of Texas, which oversees the oil and gas industry in Texas.

The electric industry is experiencing significant and rapid change in how it operates and the threats it faces. Maintaining the reliability and security of the electric grid requires providing an increasingly diverse spectrum of stakeholders with timely data and key recommendations to prepare for emerging and even unknown risks to reliability. While our end goal is a perfectly reliable BPS, there is no finish line for our efforts; technology will continue to evolve, and challenges will develop as a result. But the ERO Enterprise is up to the task and will be lighting the way every step of the journey.





Headlines

[Blackstart Study Recommends Collaboration, Planning for Resilience](#)

[Future Electricity Demand and Energy Needs Rising Rapidly; Transmission Hurdles Impact Future Reliability](#)

[Board Urges Action on Cold Weather Standard; Adopts 2024 Work Plan Priorities, Cyber Security Enhancements](#)

[NERC Releases Findings from Level 3 Alert on Cold Weather Preparations for Extreme Cold Weather Events](#)



Other NERC Activities

[Standards](#)

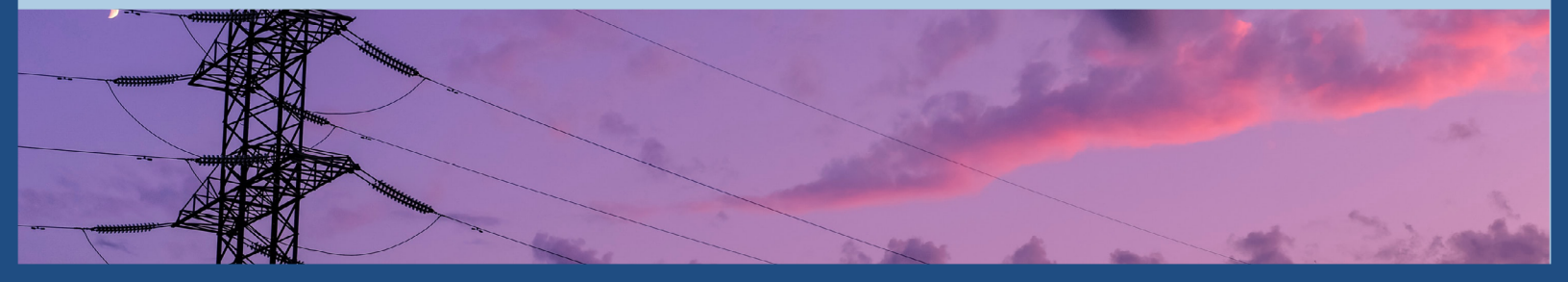
[Compliance and Enforcement](#)

[Event Analysis, Reliability Assessment and Performance Analysis Highlights](#)

Filings

[U.S. Filings](#)

[Canadian Filings](#)





Events Across the ERO Enterprise

NERC
NORTH AMERICAN ELECTRIC
RELIABILITY CORPORATION



MRO



SERC



NPCC



TEXAS RE



ReliabilityFirst



WECC



Work at NERC

Current Opportunities:

Senior Engineer - Power Systems Modeling and Studies,
Remote/Virtual

Intern - Power System Analysis and Modeling,
Remote/Virtual

Senior Standards Developer,
Remote/Virtual

Senior Engineer Transmission Assessments,
Remote/Virtual

Senior Contracts Coordinator and Procurement,
Remote/Virtual

Enforcement Analyst,
Remote/Virtual



Reliability | Resilience | Security