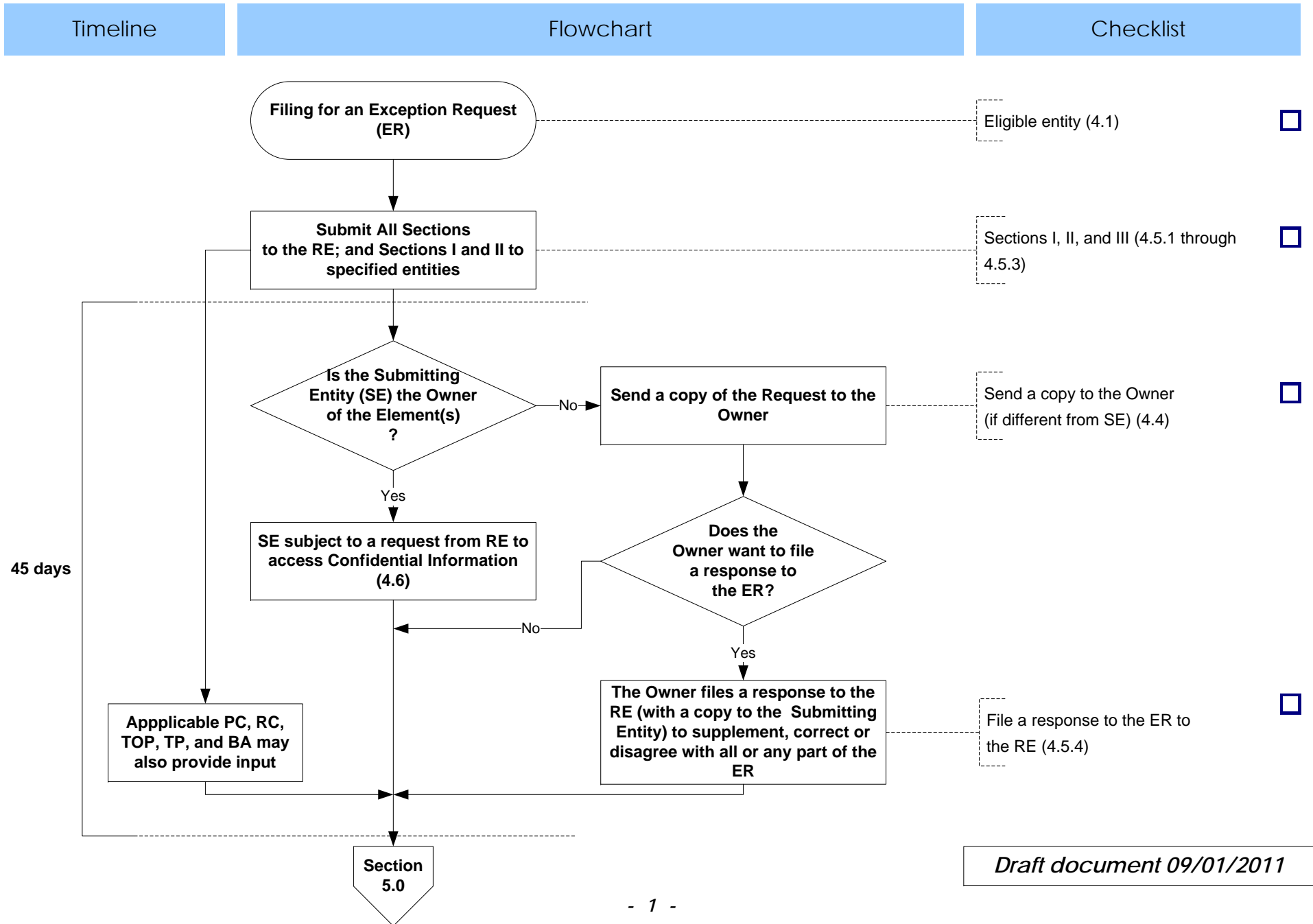


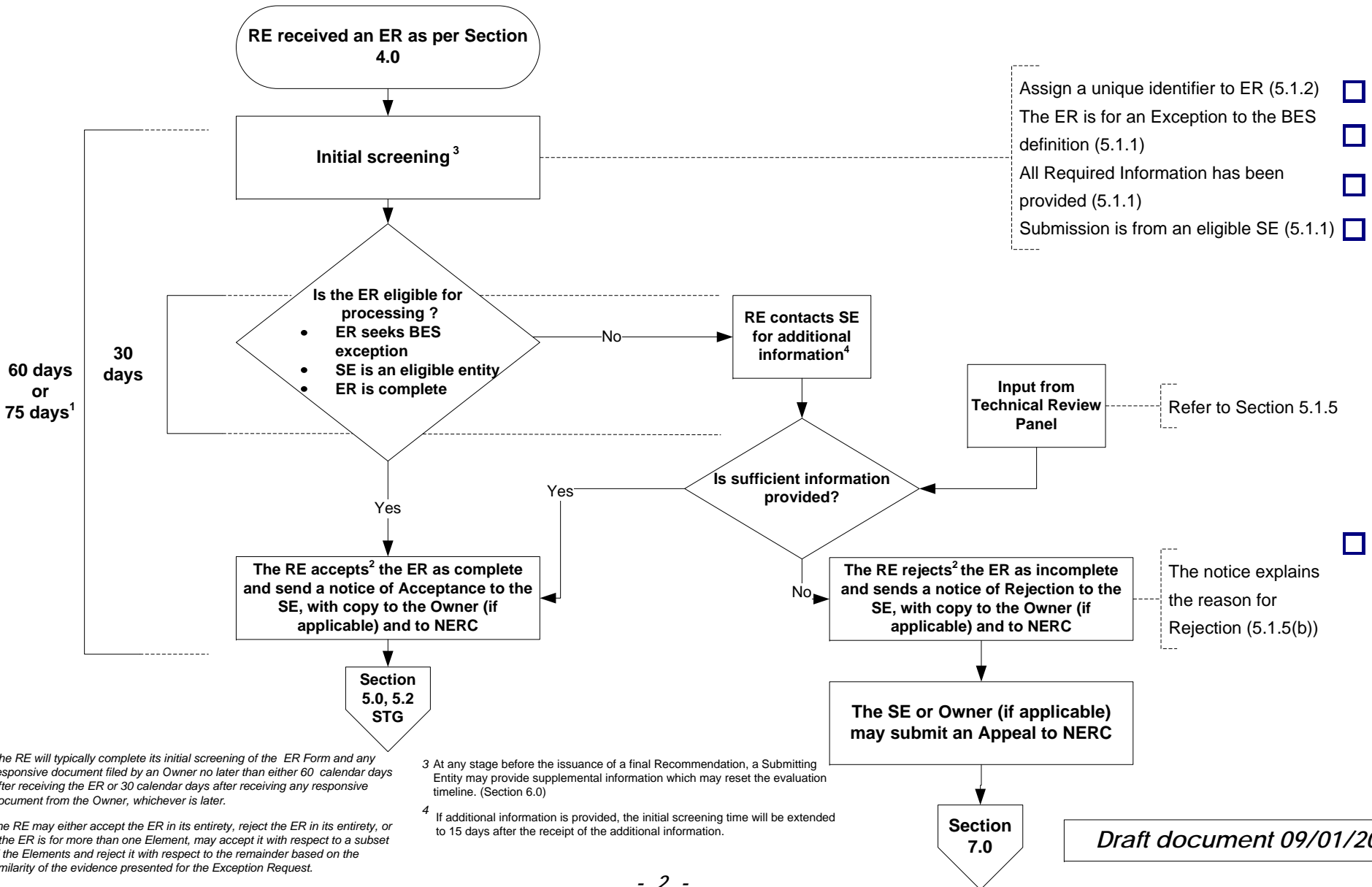
BES Element Exception Process

Section 4.0 - Form, content and submission on an exception request



BES Element Exception Process

Section 5.0 – Review, acceptance or rejection, and recommendation regarding ER FIRST STAGE



¹ The RE will typically complete its initial screening of the ER Form and any responsive document filed by an Owner no later than either 60 calendar days after receiving the ER or 30 calendar days after receiving any responsive document from the Owner, whichever is later.

² The RE may either accept the ER in its entirety, reject the ER in its entirety, or if the ER is for more than one Element, may accept it with respect to a subset of the Elements and reject it with respect to the remainder based on the similarity of the evidence presented for the Exception Request.

³ At any stage before the issuance of a final Recommendation, a Submitting Entity may provide supplemental information which may reset the evaluation timeline. (Section 6.0)

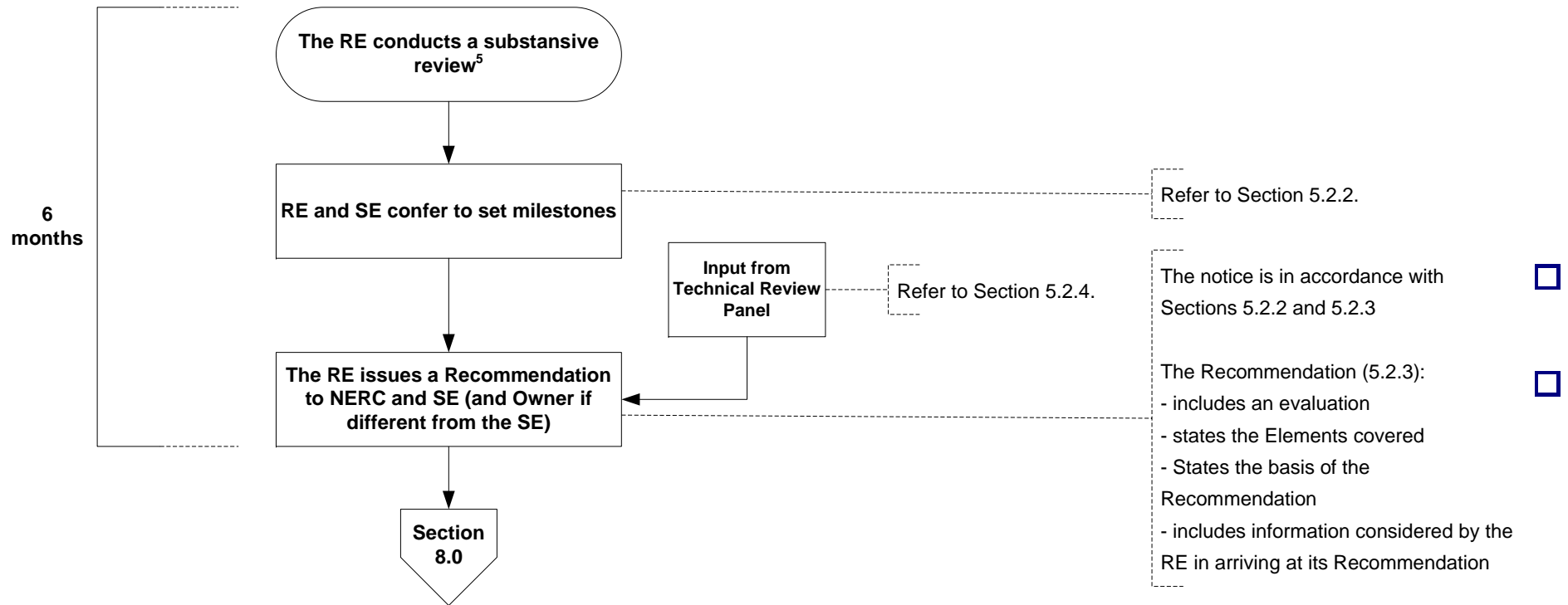
⁴ If additional information is provided, the initial screening time will be extended to 15 days after the receipt of the additional information.

BES Element Exception Process

Section 5.0 – Review, acceptance or rejection, and recommendation regarding ER

SECOND STAGE

Timeline	Flowchart	Checklist
----------	-----------	-----------



⁵ At any stage, pursuant to section 6.0, before the issuance of a final Recommendation a Submitting Entity may provide supplemental information which may reset the evaluation timeline.

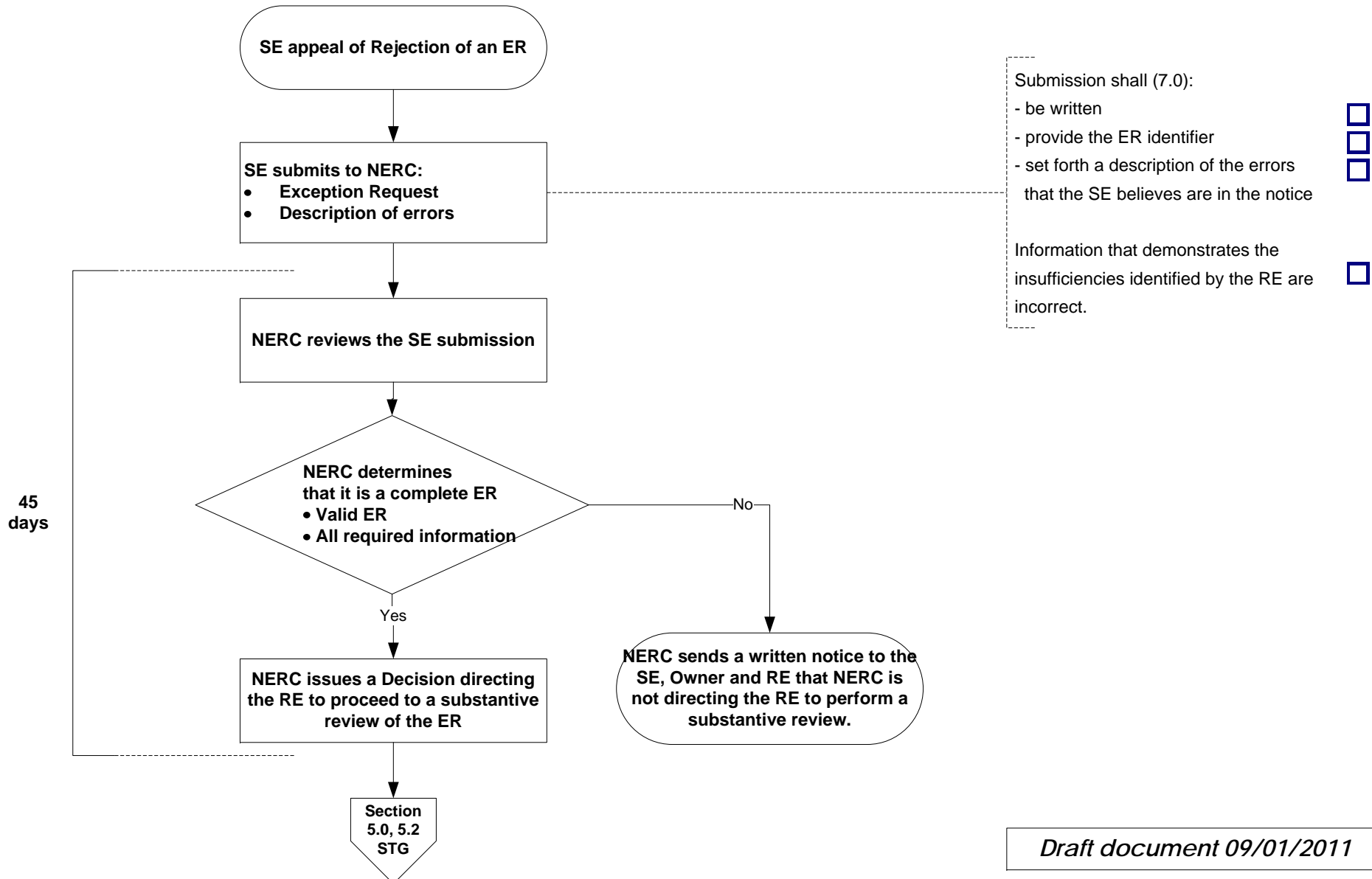
BES Element Exception Process

Section 7.0 – Appeal of Rejection of an ER Application based on its completeness

Timeline

Flowchart

Checklist



Draft document 09/01/2011

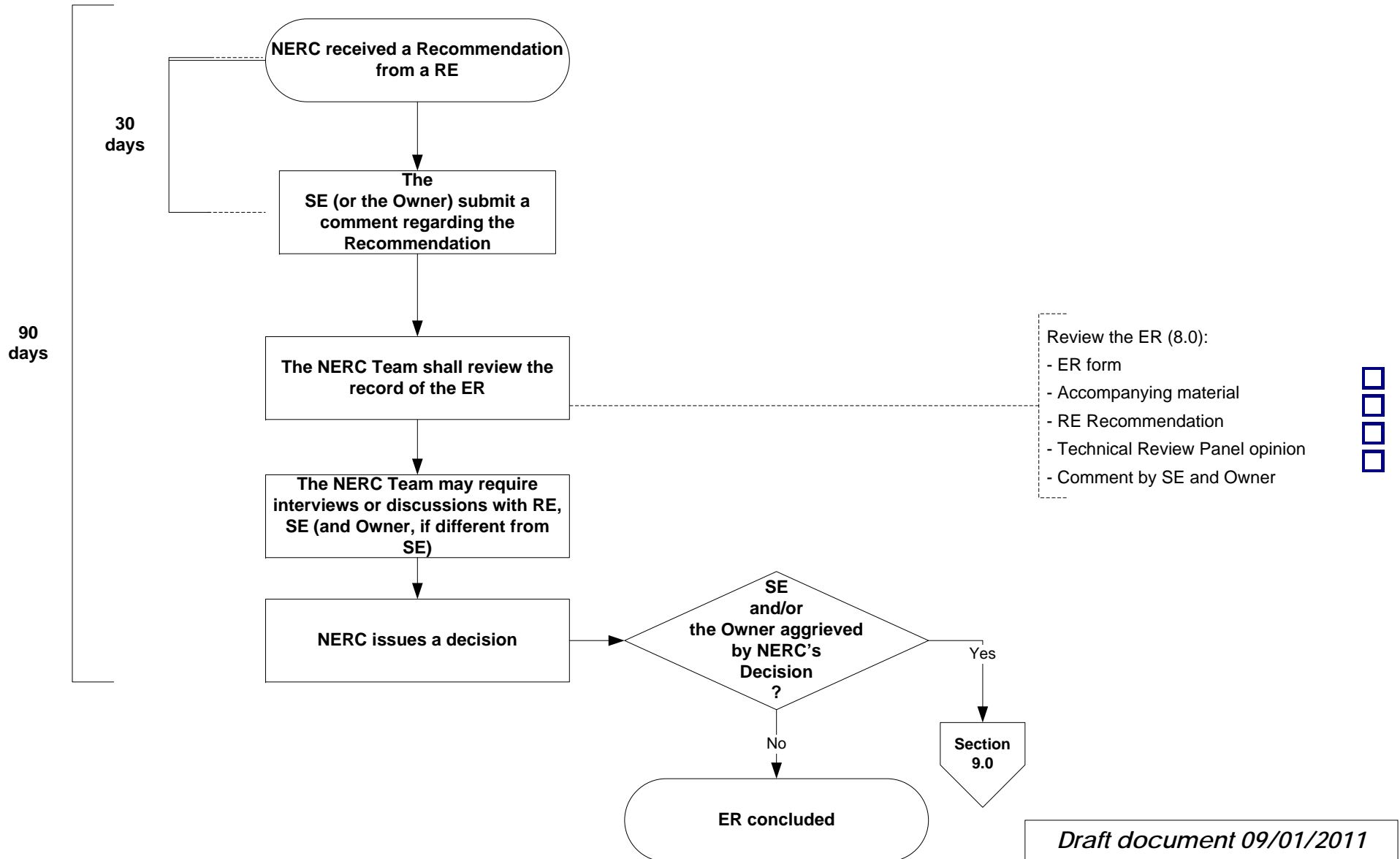
BES Element Exception Process

Section 8.0 – Approval or Disapproval of an ER

Timeline

Flowchart

Checklist



BES Element Exception Process

Section 9 – NERC BOT Review of a Decision

